



MLS 6644942 Lake Land

\$75,000

Description:

This stunning 297' lakefront property on Pickerel Lake offers exceptional fishing and breathtaking views, with sunrise and sunset vistas that will take your breath away. Located just east of Dent and southwest of Perham, this private, no-public-access lake ensures tranquility and seclusion. The lot includes an abandoned trailer house and a completed new survey, making it ready for a new owner to build their dream retreat. With 50 feet of depth, ample space, power availability, and no covenants, this is the perfect opportunity to create your ideal lakeside getaway!

Additional Details:

Lot Acres	0.27
Lot Dimensions	297 x 125
School District	549
Taxes	\$468
Taxes with Assessments	\$468
Tax Year	2024

Additional Features:

Driving Directions:

Hwy 108 East of Dent to Placid Dr. Follow signs into the Left to the property



Listed By:
New Horizons Realty Of Perham

Affinity Real Estate Inc. participates in the Regional Multiple Listing Service of Minnesota, Inc Broker Reciprocity (sm) program, allowing us to display other broker's listings on our website. All properties are subject to prior sale, change or withdrawal.



Call Affinity Real Estate

218-237-3333

info@affinityrealestate.com



Affinity Real Estate - 600 Park Avenue South - Park Rapids MN 56470



website: www.AffinityRealEstate.com | email: info@affinityrealestate.com | office: 218-237-3333 | fax: 218-237-3377



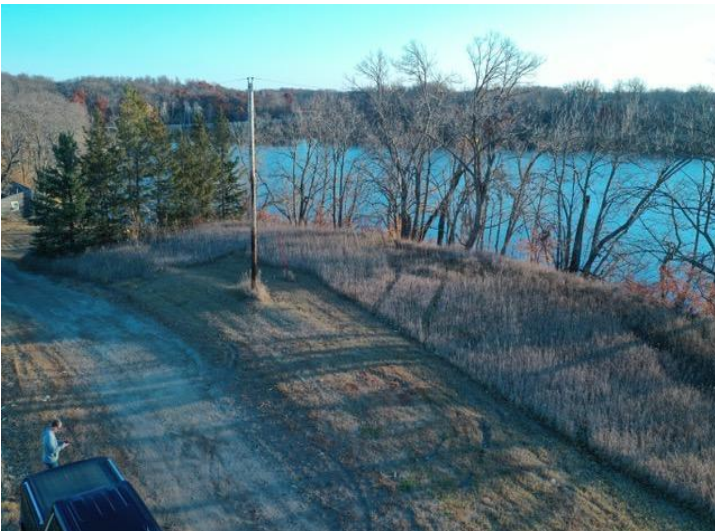
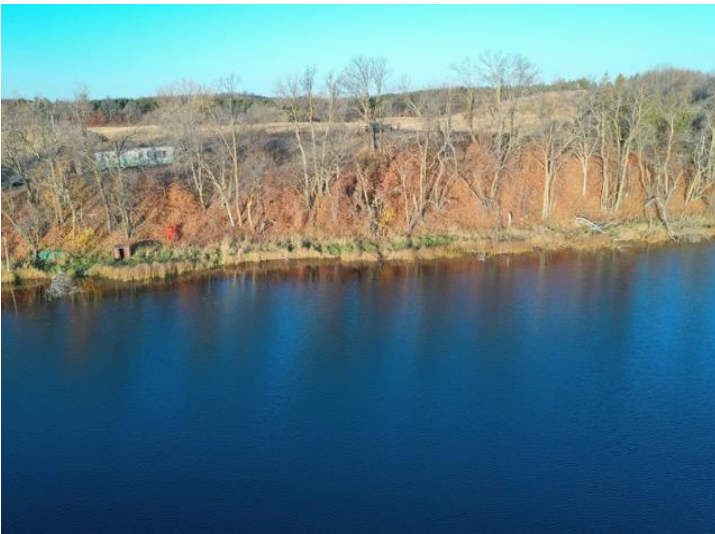
\$75,000
 MLS 6644942 Lake Land
 40740 Placid Drive
 Dent MN 56528



website: www.AffinityRealEstate.com | email: info@affinityrealestate.com | office: 218-237-3333 | fax: 218-237-3377



\$75,000
 MLS 6644942 Lake Land
 40740 Placid Drive
 Dent MN 56528



website: www.AffinityRealEstate.com | email: info@affinityrealestate.com | office: 218-237-3333 | fax: 218-237-3377



\$75,000

MLS 6644942 Lake Land
40740 Placid Drive
Dent MN 56528