



MLS 6645236 Lake Land

**\$65,000**

**Description:**

Location and flexibility, this parcel has it all. 7.65 wooded acres on a blacktop road in the heart of the Longville Lakes Area. Use it as a summer retreat, fishing and hunting getaway or year round home. Lot includes deeded access to Lake Wabedo where you can keep your boat on ready alert or trailer it to one of the many surrounding lakes, as you pursue, Walleye, Bass, Muskie, Northern or Pan Fish. You get it all except the high price and taxes of lake shore property. Open to any cabin/home builder of your choice. Come check out this beautiful lot located in the big woods of northern Minnesota !!!

**Additional Details:**

Lot Acres	7.65
Lot Dimensions	256-1336-253-1336
School District	118
Taxes	\$192
Taxes with Assessments	\$192
Tax Year	2024

**Additional Features:**

**Driving Directions:**

From Hackensack go East onto County 5, 9.3 miles to Rt onto County 11, 3.8 miles to Rt onto MN 84 S, 2.2 miles to Lt onto County 47, 3.4 miles to sign on the Lt.



Listed By:  
Timber Ghost Realty, LLC

Affinity Real Estate Inc. participates in the Regional Multiple Listing Service of Minnesota, Inc Broker Reciprocity (sm) program, allowing us to display other broker's listings on our website. All properties are subject to prior sale, change or withdrawal.



**Call Affinity Real Estate**

**218-237-3333**

**info@affinityrealestate.com**



**Affinity Real Estate - 600 Park Avenue South - Park Rapids MN 56470**





website: [www.AffinityRealEstate.com](http://www.AffinityRealEstate.com) | email: [info@affinityrealestate.com](mailto:info@affinityrealestate.com) | office: 218-237-3333 | fax: 218-237-3377



**\$65,000**

MLS 6645236 Lake Land  
XXXX County 47  
Longville MN 56655



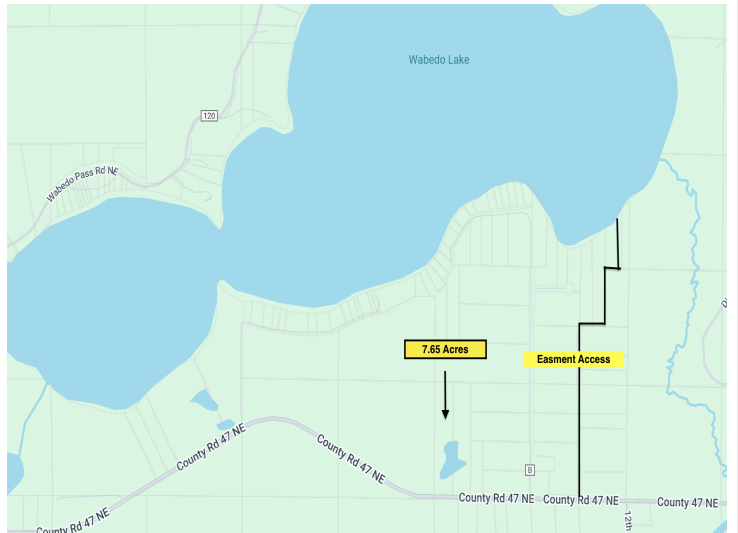


website: [www.AffinityRealEstate.com](http://www.AffinityRealEstate.com) | email: [info@affinityrealestate.com](mailto:info@affinityrealestate.com) | office: 218-237-3333 | fax: 218-237-3377



**\$65,000**  
MLS 6645236 Lake Land  
XXXX County 47  
Longville MN 56655





website: [www.AffinityRealEstate.com](http://www.AffinityRealEstate.com) | email: [info@affinityrealestate.com](mailto:info@affinityrealestate.com) | office: 218-237-3333 | fax: 218-237-3377



**\$65,000**

MLS 6645236 Lake Land  
XXXX County 47  
Longville MN 56655