



MLS 6645310 Commercial Sale

\$149,000



Description:

A business opportunity awaits the right person. The Hewitt Service Station is located on Hwy 210, a main route for people traveling to their cabins further north. There are gas pumps out front and the inside has room for 2-3 vehicles to be serviced. The back lot allows for parking of vehicles waiting to be serviced or picked up. This small town service center/gas station is centrally located and easy for customers to find. Since listing, the inside walls and ceiling have been painted and the the South and West walls have had white steel installed. Some new windows have been installed and others finished to give lots of natural light. New lighting has been installed throughout the service center. Check out this opportunity today!

Seller based financing may be an option for the right offer.

Additional Details:

Year Built	1948
Lot Dimensions	72x200
Garage Stalls	3
School District	786
Taxes	\$734
Taxes with Assessments	\$734
Tax Year	2024

Additional Features:

Fuel: Natural Gas, Wood **Heat:** Forced Air, Wood Stove

Driving Directions:

From Hwy 10, exit and go east on Hwy 27 for 25 miles to Long Prairie. Turn right on Hwy 71 and continue for 29 miles to Hewitt. Right on Hwy 210 and Hewitt Service Center is on the right.



Listed By:
eXp Realty

Affinity Real Estate Inc. participates in the Regional Multiple Listing Service of Minnesota, Inc Broker Reciprocity (sm) program, allowing us to display other broker's listings on our website. All properties are subject to prior sale, change or withdrawal.



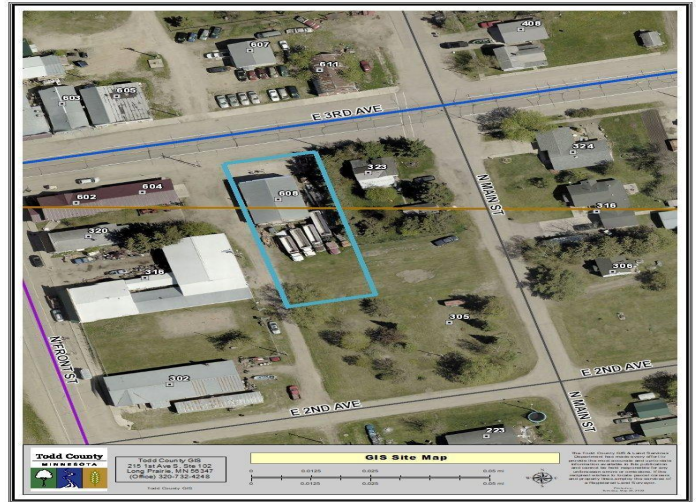
Call Affinity Real Estate

218-237-3333

info@affinityrealestate.com



Affinity Real Estate - 600 Park Avenue South - Park Rapids MN 56470



website: www.AffinityRealEstate.com | email: info@affinityrealestate.com | office: 218-237-3333 | fax: 218-237-3377



\$149,000
 MLS 6645310 Commercial
 Sale
 608 3rd Avenue
 Hewitt MN 56453



website: www.AffinityRealEstate.com | email: info@affinityrealestate.com | office: 218-237-3333 | fax: 218-237-3377

Affinity
REAL ESTATE INC

\$149,000
MLS 6645310 Commercial
Sale
608 3rd Avenue
Hewitt MN 56453



website: www.AffinityRealEstate.com | email: info@affinityrealestate.com | office: 218-237-3333 | fax:218-237-3377



\$149,000
MLS 6645310 Commercial
Sale
608 3rd Avenue
Hewitt MN 56453