



MLS 6645348 Residential

**\$285,000**

2,916 sq ft  
6 bedrooms  
2 baths

1601 Bixby Avenue  
Bemidji MN 56601

Status: Active

**Description:**

Move in ready 6 bedroom, 2 bathroom home in a convenient location close to BSU. Hardwood floors throughout the main level and plenty of space. Separate living space downstairs, natural gas heat, central air, private fenced in backyard. Oversized heated double garage. Set up your showing today!!

**Additional Details:**

Year Built	1954
Lot Acres	0.2
Lot Dimensions	63' x 140'
Garage Stalls	2
School District	31
Taxes	\$2,642
Taxes with Assessments	\$2,642
Tax Year	2024

**Additional Features:**

**Basement:** Egress Window(s), Full, Concrete, Storage Space **Fuel:** Natural Gas **Garage:** 2 **Heat:** Forced Air **Sewer:** City Sewer/Connected  
**Water:** City Water/Connected **Air Conditioning:** Central Air

**Driving Directions:**

North on Bemidji Ave N, Right on 16th St NE, Left on Bixby Ave NE, First house on Left side of the road (house on the Corner Lot)



Listed By:  
Grimes Realty

Affinity Real Estate Inc. participates in the Regional Multiple Listing Service of Minnesota, Inc Broker Reciprocity (sm) program, allowing us to display other broker's listings on our website. All properties are subject to prior sale, change or withdrawal.



Call Affinity Real Estate

**218-237-3333**

[info@affinityrealestate.com](mailto:info@affinityrealestate.com)



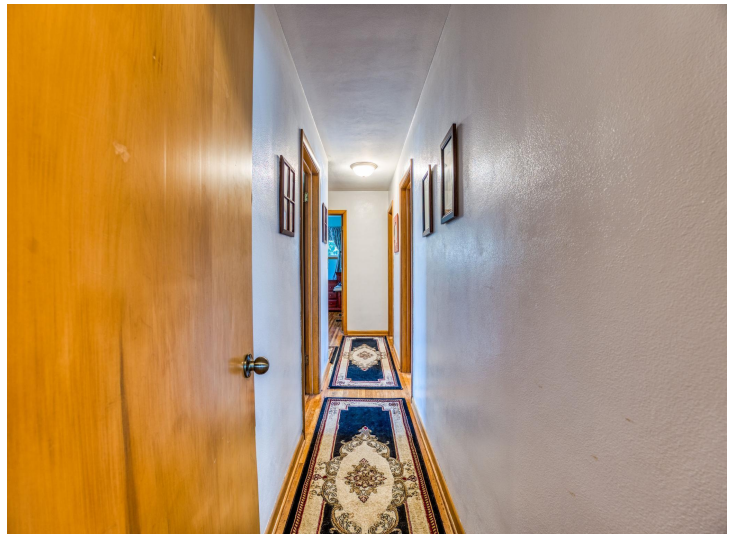
Affinity Real Estate - 600 Park Avenue South - Park Rapids MN 56470



website: [www.AffinityRealEstate.com](http://www.AffinityRealEstate.com) | email: [info@affinityrealestate.com](mailto:info@affinityrealestate.com) | office: 218-237-3333 | fax: 218-237-3377

**Affinity**  
REAL ESTATE INC

**\$285,000**  
MLS 6645348 Residential  
1601 Bixby Avenue  
Bemidji MN 56601



website: [www.AffinityRealEstate.com](http://www.AffinityRealEstate.com) | email: [info@affinityrealestate.com](mailto:info@affinityrealestate.com) | office: 218-237-3333 | fax:218-237-3377



**\$285,000**  
MLS 6645348 Residential  
1601 Bixby Avenue  
Bemidji MN 56601



website: [www.AffinityRealEstate.com](http://www.AffinityRealEstate.com) | email: [info@affinityrealestate.com](mailto:info@affinityrealestate.com) | office: 218-237-3333 | fax:218-237-3377

**Affinity**  
REAL ESTATE INC

**\$285,000**  
MLS 6645348 Residential  
1601 Bixby Avenue  
Bemidji MN 56601



website: [www.AffinityRealEstate.com](http://www.AffinityRealEstate.com) | email: [info@affinityrealestate.com](mailto:info@affinityrealestate.com) | office: 218-237-3333 | fax: 218-237-3377

**Affinity**  
REAL ESTATE INC

**\$285,000**  
MLS 6645348 Residential  
1601 Bixby Avenue  
Bemidji MN 56601



website: [www.AffinityRealEstate.com](http://www.AffinityRealEstate.com) | email: [info@affinityrealestate.com](mailto:info@affinityrealestate.com) | office: 218-237-3333 | fax:218-237-3377



**\$285,000**  
MLS 6645348 Residential  
1601 Bixby Avenue  
Bemidji MN 56601



website: [www.AffinityRealEstate.com](http://www.AffinityRealEstate.com) | email: [info@affinityrealestate.com](mailto:info@affinityrealestate.com) | office: 218-237-3333 | fax:218-237-3377



**\$285,000**  
MLS 6645348 Residential  
1601 Bixby Avenue  
Bemidji MN 56601



website: [www.AffinityRealEstate.com](http://www.AffinityRealEstate.com) | email: [info@affinityrealestate.com](mailto:info@affinityrealestate.com) | office: 218-237-3333 | fax:218-237-3377



**\$285,000**  
MLS 6645348 Residential  
1601 Bixby Avenue  
Bemidji MN 56601