



MLS 6645793 Commercial Sale

\$950,000



Description:

Build your next multi-family complex right here on this 2+ acre property Zoned R-6 (Multi-Family)! This property is currently surrounded by several apartment complexes and begs for a new owner to do the same!

Additional Details:

Year Built	1956
Lot Acres	2.4
Lot Dimensions	160x630
Garage Stalls	2
School District	31
Taxes	\$2,485
Taxes with Assessments	\$3,362
Tax Year	2024

Additional Features:

Fuel: Natural Gas **Garage:** 2 **Heat:** Forced Air **Sewer:** Private Sewer **Water:** Well **Air Conditioning:** Central Air

Driving Directions:

North on Irvine Ave, left on 15th St, right on Norton Ave, #1907 on the left.



Listed By:
Century 21 Dickinson

Affinity Real Estate Inc. participates in the Regional Multiple Listing Service of Minnesota, Inc Broker Reciprocity (sm) program, allowing us to display other broker's listings on our website. All properties are subject to prior sale, change or withdrawal.



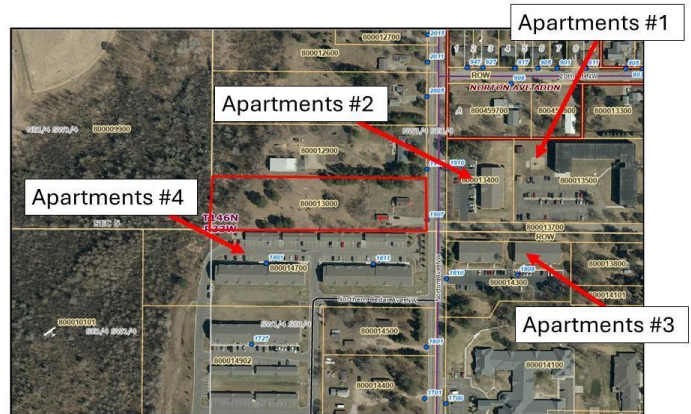
Call Affinity Real Estate

218-237-3333

info@affinityrealestate.com



Affinity Real Estate - 600 Park Avenue South - Park Rapids MN 56470



This Property Is Surrounded By Apartments.



website: www.AffinityRealEstate.com | email: info@affinityrealestate.com | office: 218-237-3333 | fax:218-237-3377



\$950,000
MLS 6645793 Commercial
Sale
1907 Norton Avenue
Bemidji MN 56601



Property Is Commercially Zoned For R-6 (Multi-Family).



website: www.AffinityRealEstate.com | email: info@affinityrealestate.com | office: 218-237-3333 | fax:218-237-3377



\$950,000
MLS 6645793 Commercial
Sale
1907 Norton Avenue
Bemidji MN 56601