



MLS 6646346 Lake Home

\$595,000

5,446 sq ft
5 bedrooms
4 baths

700 Lake Placid Boulevard
Pillager MN 56473

Waterfront: Crow Wing River

Status: Pending

Description:

This is indeed a unique property spanning over 6.5 acres on the Crow Wing River. Boasting an expansive yard with perfect level elevation at water's edge with over 700' of frontage. Nestled on a small hill with safe elevation from the river sits a 5bd 4ba main and a 3bd 2ba In-law quarters/guest suite all under one roof totaling over 7400 Sq Ft. Savor a cup of coffee and relax on the spacious deck while observing the abundant wildlife including the eagles that frequently soar overhead. This would be a fantastic investment as a rental, cabin, or main home with overflow space for the family. Home was built as an estate with everything you need on the main level so with that in mind you could have an additional 3 apartments with minimal expense. For all your toys and workshop space, you have multiple options with a 32x40 insulated 3 car garage, 20x30 garage, 10x20 shed, and a tuck under insulated 2 car garage. The main home has many upgrades including granite countertops, 9' ceiling, hickory cabinets, knotty pine doors, primary suite, walk-in closets, workout room, rec. room, bar, and extra kitchen. This home is energy efficient and designed with minimal maintenance in mind. There are endless outdoor activities including lush gardening, fishing, hiking, kayaking, boating, swimming and pickleball.

Book your showing now!

Additional Details:

Year Built	2000
Lot Acres	6.6
Lot Dimensions	irreg
Garage Stalls	6
School District	116
Taxes	\$1,366
Taxes with Assessments	\$1,432
Tax Year	2024

Additional Features:

Fuel: Natural Gas **Heat:** Forced Air

Driving Directions:

From Baxter Head west on hwy 210 to left on county rd 1 to right on



Listed By:
Woods to Water Real Estate

Affinity Real Estate Inc. participates in the Regional Multiple Listing Service of Minnesota, Inc Broker Reciprocity (sm) program, allowing us to display other broker's listings on our website. All properties are subject to prior sale, change or withdrawal.

600 Park Ave



Call Affinity Real Estate

218-237-3333

info@affinityrealestate.com



Affinity Real Estate - 600 Park Avenue South - Park Rapids MN 56470



website: www.AffinityRealEstate.com | email: info@affinityrealestate.com | office: 218-237-3333 | fax: 218-237-3377



\$595,000

MLS 6646346 Lake Home
700 Lake Placid Boulevard
Pillager MN 56473



website: www.AffinityRealEstate.com | email: info@affinityrealestate.com | office: 218-237-3333 | fax: 218-237-3377



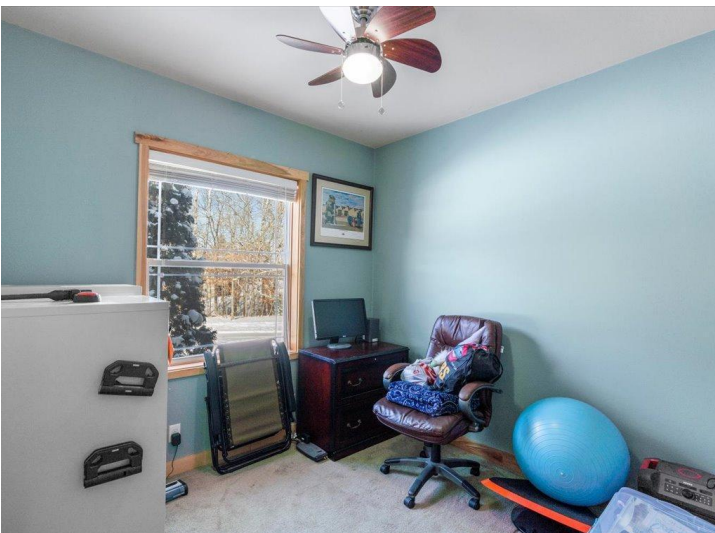
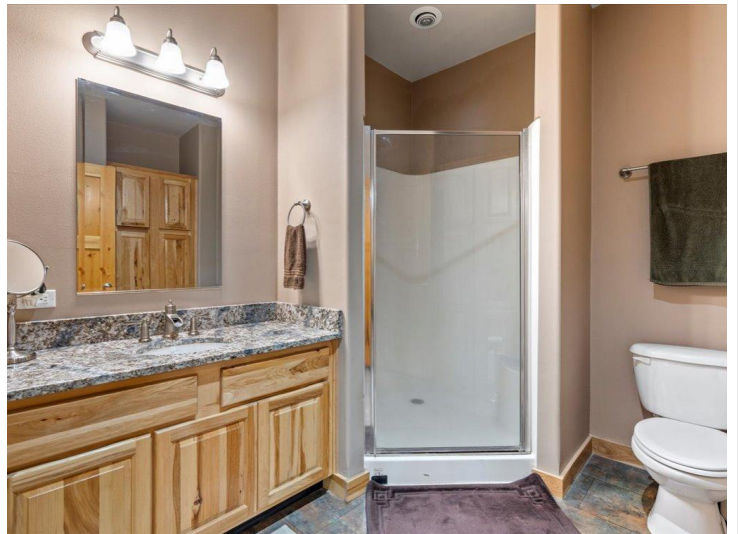
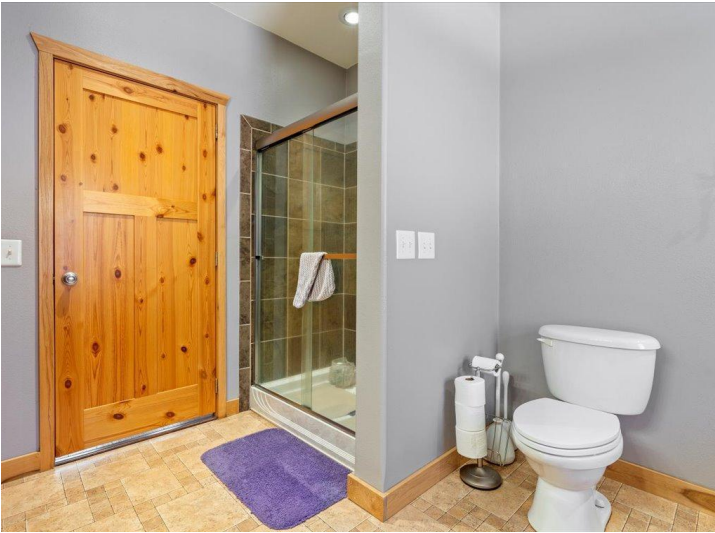
\$595,000
MLS 6646346 Lake Home
700 Lake Placid Boulevard
Pillager MN 56473



website: www.AffinityRealEstate.com | email: info@affinityrealestate.com | office: 218-237-3333 | fax: 218-237-3377

Affinity
REAL ESTATE INC

\$595,000
MLS 6646346 Lake Home
700 Lake Placid Boulevard
Pillager MN 56473



website: www.AffinityRealEstate.com | email: info@affinityrealestate.com | office: 218-237-3333 | fax: 218-237-3377

Affinity
REAL ESTATE INC

\$595,000
MLS 6646346 Lake Home
700 Lake Placid Boulevard
Pillager MN 56473



website: www.AffinityRealEstate.com | email: info@affinityrealestate.com | office: 218-237-3333 | fax: 218-237-3377

Affinity
REAL ESTATE INC

\$595,000

MLS 6646346 Lake Home
700 Lake Placid Boulevard
Pillager MN 56473



website: www.AffinityRealEstate.com | email: info@affinityrealestate.com | office: 218-237-3333 | fax: 218-237-3377



\$595,000

MLS 6646346 Lake Home
700 Lake Placid Boulevard
Pillager MN 56473



website: www.AffinityRealEstate.com | email: info@affinityrealestate.com | office: 218-237-3333 | fax: 218-237-3377



\$595,000

MLS 6646346 Lake Home
700 Lake Placid Boulevard
Pillager MN 56473



website: www.AffinityRealEstate.com | email: info@affinityrealestate.com | office: 218-237-3333 | fax: 218-237-3377

Affinity
REAL ESTATE INC

\$595,000

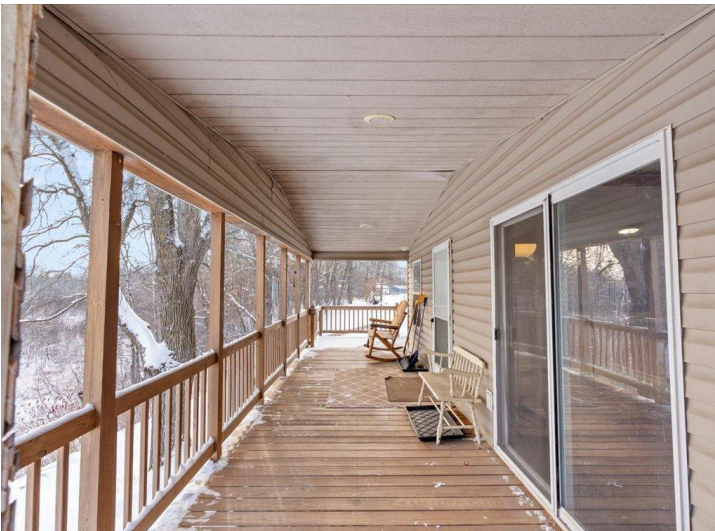
MLS 6646346 Lake Home
700 Lake Placid Boulevard
Pillager MN 56473



website: www.AffinityRealEstate.com | email: info@affinityrealestate.com | office: 218-237-3333 | fax: 218-237-3377

Affinity
REAL ESTATE INC

\$595,000
MLS 6646346 Lake Home
700 Lake Placid Boulevard
Pillager MN 56473



website: www.AffinityRealEstate.com | email: info@affinityrealestate.com | office: 218-237-3333 | fax: 218-237-3377

Affinity
REAL ESTATE INC

\$595,000

MLS 6646346 Lake Home
700 Lake Placid Boulevard
Pillager MN 56473



website: www.AffinityRealEstate.com | email: info@affinityrealestate.com | office: 218-237-3333 | fax: 218-237-3377



\$595,000

MLS 6646346 Lake Home
700 Lake Placid Boulevard
Pillager MN 56473