



MLS 6646467 Lake Land

\$250,000

Description:

House Pad #4. Taxes: TBD. Kohler Strom's Resort is the newest common interest community in the lakes area. There are 4-2 bdrm 1 bath cabins & a single family home. Building sites for 400 sq' homes w/ decks & access to Pelican Lake via a shared, newly installed marina w/ 14 boat slips. Each unit in the resort will have it's own designated slip. There will also be 15 pad sites for sale on the east side of County 31 to allow for 32'x60' storage buildings consistent with HOA rules. Owner's are responsible for their electricity, water & sewer. Units are approved for a well & septic holding tank. Buyers of the building sites will be responsible for constructing homes that are consistent with the HOA rules. With the building site comes shared access to over 566' of lake frontage on Pelican Lake with a newly constructed swimming area. HOA fees start June 1, 2026.

Additional Details:

Lot Acres	0.02
Lot Dimensions	26.67x23
School District	548
Taxes	\$362
Taxes with Assessments	\$362
Tax Year	2025

Additional Features:

Driving Directions:

From



Listed By:
Town & Country Realty

Affinity Real Estate Inc. participates in the Regional Multiple Listing Service of Minnesota, Inc Broker Reciprocity (sm) program, allowing us to display other broker's listings on our website. All properties are subject to prior sale, change or withdrawal.



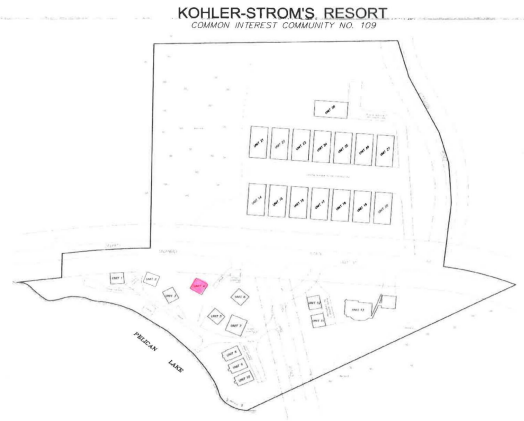
Call Affinity Real Estate

218-237-3333

info@affinityrealestate.com



Affinity Real Estate - 600 Park Avenue South - Park Rapids MN 56470



PELICAN LAKE RESORT

RENDERING
A0

website: www.AffinityRealEstate.com | email: info@affinityrealestate.com | office: 218-237-3333 | fax: 218-237-3377

Affinity
REAL ESTATE INC

\$250,000

MLS 6646467 Lake Land
51021-#4 Fish Lake Road
Detroit Lakes MN 56501