



MLS 6646731 Commercial

\$239,000

5024 St Hwy 84
Longville MN 56655

Status: Active

Description:

Embrace the opportunity! This delightful cottage-style building, strategically positioned along St Hwy 84 & Co 5, presents an ideal setting to expand your business. Situated in the thriving town of Longville, renowned for its exceptional fishing, hunting, & diverse activities on Woman & Girl Lake, this property offers prime real estate options for purchase or lease. Previously a real estate office, the interior and exterior of this office space are well maintained. The open plan with 9' ceilings allows for easy customization to suit your needs. The 8' windows provide optimal visibility for effective marketing. Lots of space for company signs, 3 separate entry doors, and parking for 12 further enhance the property's appeal. Unmatched amenities make this building stand out in the town, including a kiosk for product promotion at the town's focal point. Positioned just 1/4 mile from the airport and walking distance to lakes. Grow your company here!

Additional Details:

Year Built	2004
Lot Acres	0.9
Lot Dimensions	48x95
School District	118
Taxes	\$1,566
Taxes with Assessments	\$1,566
Tax Year	2025

Additional Features:

Basement: 8 ft+ Pour, Partial, Concrete, Unfinished **Fuel:** Propane **Heat:** Forced Air **Sewer:** City Sewer/Connected **Water:** Sand Point, Well **Air Conditioning:** Central Air

Driving Directions:

From Brainerd: North on Hwy 371 to Hackensack. East on Co 5 (Woman Lake Rd) to Longville. Crossroads of Co 5 & St Hwy 84 in downtown Longville.



Listed By:
Dane Arthur Real Estate Agency-Longville

Affinity Real Estate Inc. participates in the Regional Multiple Listing Service of Minnesota, Inc Broker Reciprocity (sm) program, allowing us to display other broker's listings on our website. All properties are subject to prior sale, change or withdrawal.



Call Affinity Real Estate

218-237-3333

info@affinityrealestate.com



Affinity Real Estate - 600 Park Avenue South - Park Rapids MN 56470



website: www.AffinityRealEstate.com | email: info@affinityrealestate.com | office: 218-237-3333 | fax: 218-237-3377

Affinity
REAL ESTATE INC

\$239,000
MLS 6646731 Commercial
5024 St Hwy 84
Longville MN 56655



website: www.AffinityRealEstate.com | email: info@affinityrealestate.com | office: 218-237-3333 | fax: 218-237-3377



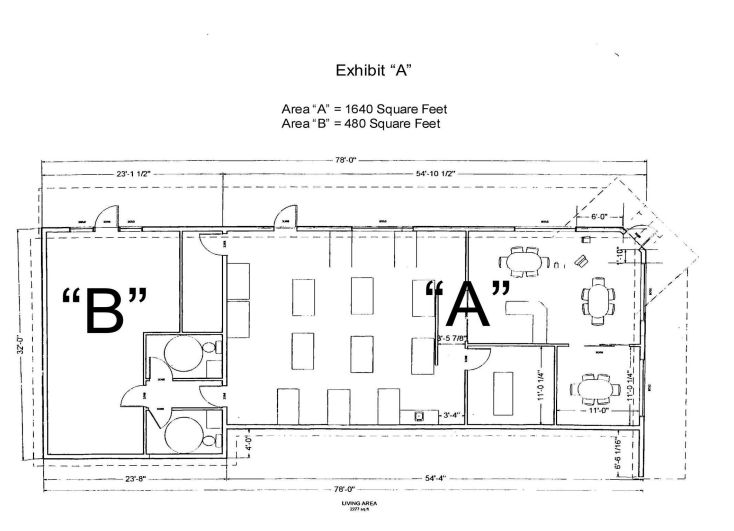
\$239,000
 MLS 6646731 Commercial
 5024 St Hwy 84
 Longville MN 56655



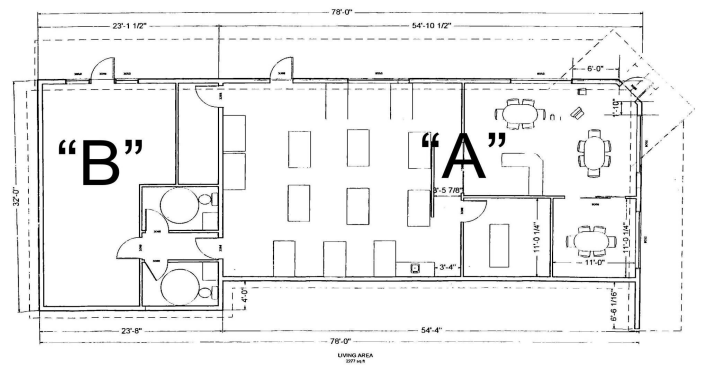
website: www.AffinityRealEstate.com | email: info@affinityrealestate.com | office: 218-237-3333 | fax: 218-237-3377

Affinity
REAL ESTATE INC

\$239,000
MLS 6646731 Commercial
5024 St Hwy 84
Longville MN 56655



Area "A" = 1640 Square Feet
Area "B" = 480 Square Feet



Page 5 of 5