



MLS 6647258 Residential

\$739,000

4,272 sq ft
3 bedrooms
3 baths

26109 Hidden Road
Akeley MN 56433

Status: Active

Description:

Set on 20 acres of private land, this custom-built home offers the perfect blend of country living and modern comfort. Outdoor adventures are never far away as this property is located just a short drive from Leech Lake and both the Paul Bunyan and Heartland Trails. Inside, the home features an open, airy layout with vaulted ceilings and large windows that flood the space with natural light. The stunning stone fireplace in the living room adds warmth and character. The kitchen is a dream, with elegant granite countertops, a spacious island, and a walk-in pantry offering plenty of storage. The main floor is home to the primary suite, with a large walk-in closet and tiled shower. Above the garage, you will find a huge bonus room ideal for a home office, playroom, or extra living space. The walkout basement provides easy access to the outdoors and offers even more room to grow. This property is perfect for a hobby farm, with a fenced pasture, a chicken coop, and a 45' x 30' pole barn, along with multiple additional outbuildings and sheds all equipped with electricity. For year-round comfort, the home features geothermal heating and cooling, ensuring efficiency no matter the season. Beautiful landscaping throughout the property enhances its natural beauty, making this home a true county sanctuary. Whether you love outdoor adventures or simply want a quiet, country lifestyle, this property has it all!

Additional Details:

Year Built	2014
Lot Acres	20
Lot Dimensions	1327x636x1326x654
Garage Stalls	6
School District	113
Taxes	\$3,778
Taxes with Assessments	\$3,988
Tax Year	2024

Additional Features:

Basement: Block, Daylight/Lookout Windows, Egress Window(s), Finished, Full, Walkout **Fuel:** Propane **Garage:** 6 **Heat:** Forced Air, Fireplace(s), Geothermal **Sewer:** Mound Septic, Private Sewer **Water:** Drilled, Private, Well **Air Conditioning:** Central Air, Geothermal

Driving Directions:

From Park Rapids go east on Hwy 34 towards Akeley. Continue through Akeley to Hwy 107/Hidden Rd.



Listed By:
Keller Williams Realty Professionals

Affinity Real Estate Inc. participates in the Regional Multiple Listing Service of Minnesota, Inc Broker Reciprocity (sm) program, allowing us to display other broker's listings on our website. All properties are subject to prior sale, change or withdrawal.



Call Affinity Real Estate

218-237-3333

info@affinityrealestate.com



Affinity Real Estate - 600 Park Avenue South - Park Rapids MN 56470



website: www.AffinityRealEstate.com | email: info@affinityrealestate.com | office: 218-237-3333 | fax: 218-237-3377

Affinity
REAL ESTATE INC

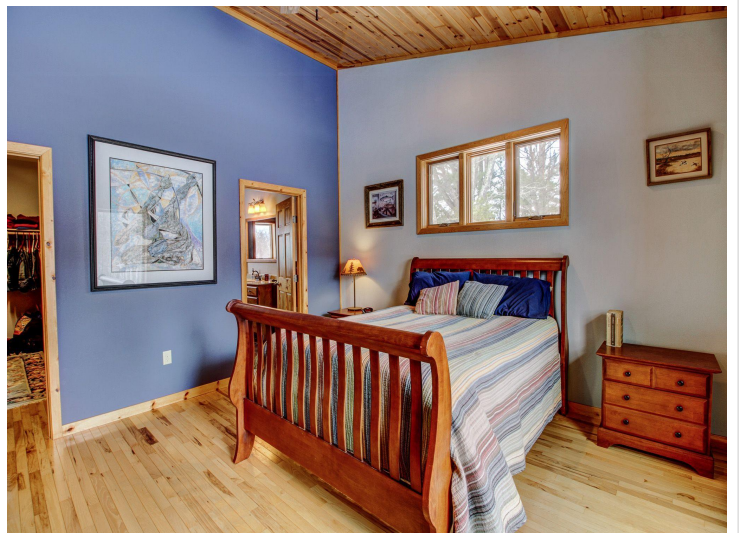
\$739,000
MLS 6647258 Residential
26109 Hidden Road
Akeley MN 56433



website: www.AffinityRealEstate.com | email: info@affinityrealestate.com | office: 218-237-3333 | fax: 218-237-3377

Affinity
REAL ESTATE INC

\$739,000
MLS 6647258 Residential
26109 Hidden Road
Akeley MN 56433



website: www.AffinityRealEstate.com | email: info@affinityrealestate.com | office: 218-237-3333 | fax:218-237-3377

Affinity
REAL ESTATE INC

\$739,000
MLS 6647258 Residential
26109 Hidden Road
Akeley MN 56433



website: www.AffinityRealEstate.com | email: info@affinityrealestate.com | office: 218-237-3333 | fax:218-237-3377

Affinity
REAL ESTATE INC

\$739,000
MLS 6647258 Residential
26109 Hidden Road
Akeley MN 56433



website: www.AffinityRealEstate.com | email: info@affinityrealestate.com | office: 218-237-3333 | fax:218-237-3377

Affinity
REAL ESTATE INC

\$739,000
MLS 6647258 Residential
26109 Hidden Road
Akeley MN 56433



website: www.AffinityRealEstate.com | email: info@affinityrealestate.com | office: 218-237-3333 | fax:218-237-3377

Affinity
REAL ESTATE INC

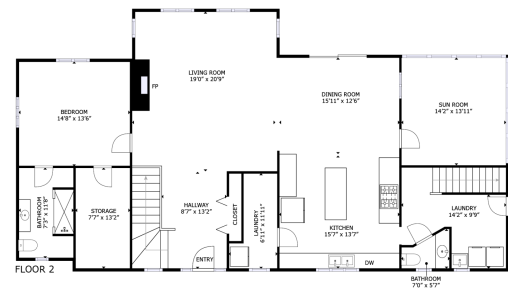
\$739,000
MLS 6647258 Residential
26109 Hidden Road
Akeley MN 56433



website: www.AffinityRealEstate.com | email: info@affinityrealestate.com | office: 218-237-3333 | fax: 218-237-3377

Affinity
REAL ESTATE INC

\$739,000
MLS 6647258 Residential
26109 Hidden Road
Akeley MN 56433



FLOOR 2

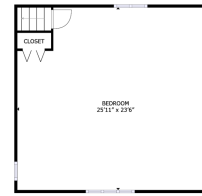
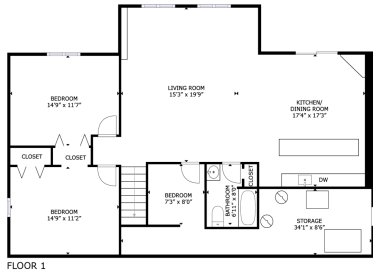
GROSS INTERNAL AREA
 FLOOR 1: 1,389 sq. ft. FLOOR 2: 1,402 sq. ft.
 FLOOR 3: 411 sq. ft. TOTAL: 3,204 sq. ft.
 CEILING AND CONSTRUCTION ARE APPROXIMATE. TOTAL MAY VARY.



website: www.AffinityRealEstate.com | email: info@affinityrealestate.com | office: 218-237-3333 | fax: 218-237-3377



\$739,000
 MLS 6647258 Residential
 26109 Hidden Road
 Akeley MN 56433



FLOOR 1

GROSS INTERNAL AREA
 FLOOR 1: 1,389 sq. ft. FLOOR 2: 1,922 sq. ft.
 FLOOR 3: 413 sq. ft. TOTAL: 3,724 sq. ft.
 SIZES AND DIMENSIONS ARE APPROXIMATE. ACTUAL MAY VARY.



FLOOR 3

GROSS INTERNAL AREA
 FLOOR 1: 1,389 sq. ft. FLOOR 2: 1,922 sq. ft.
 FLOOR 3: 413 sq. ft. TOTAL: 3,724 sq. ft.
 SIZES AND DIMENSIONS ARE APPROXIMATE. ACTUAL MAY VARY.



website: www.AffinityRealEstate.com | email: info@affinityrealestate.com | office: 218-237-3333 | fax: 218-237-3377



\$739,000
 MLS 6647258 Residential
 26109 Hidden Road
 Akeley MN 56433