

MLS 6647647 Land

\$150,000

40 Acres
Raw Land

XXX 300 Street
Henning MN 56551

Status: Pending

Description:

Here is a vacant 40 acres of land located in close proximity to 3 lakes. This property has tillable and CRP acreage which includes a pond. Come make this your outdoor recreational land, addition to your farm acreage or place to build a home with the very desired amount of acreage.

Additional Details:

Lot Acres	40
Lot Dimensions	1600 Ft x 1300 Ft, Irregular
School District	545
Taxes	\$624
Taxes with Assessments	\$624
Tax Year	2024

Additional Features:

Driving Directions:

Traveling West from Henning on State Highway 108, travel approximately 6 miles to County Road 300 Th St. Turn right and the property will be on the right.



Listed By:
Weichert RE - Paulson Land Co

Affinity Real Estate Inc. participates in the Regional Multiple Listing Service of Minnesota, Inc Broker Reciprocity (sm) program, allowing us to display other broker's listings on our website. All properties are subject to prior sale, change or withdrawal.



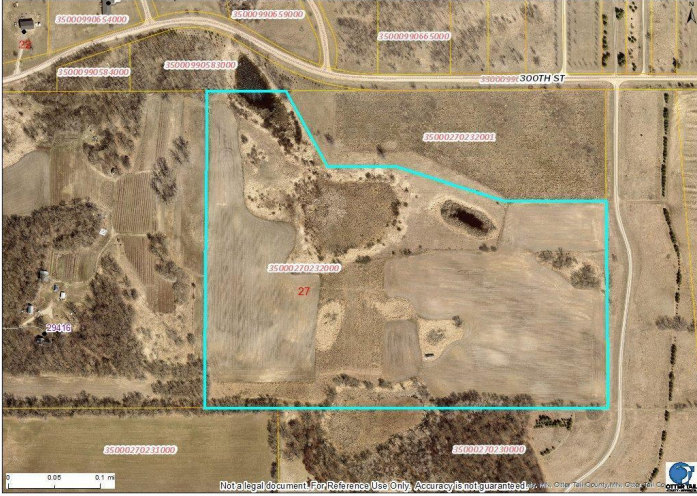
Call Affinity Real Estate

218-237-3333

info@affinityrealestate.com



Affinity Real Estate - 600 Park Avenue South - Park Rapids MN 56470



website: www.AffinityRealEstate.com | email: info@affinityrealestate.com | office: 218-237-3333 | fax: 218-237-3377



\$150,000
 MLS 6647647 Land
 XXX 300 Street
 Henning MN 56551



website: www.AffinityRealEstate.com | email: info@affinityrealestate.com | office: 218-237-3333 | fax:218-237-3377



\$150,000
MLS 6647647 Land
XXX 300 Street
Henning MN 56551