



MLS 6647843 Lake Land

\$125,000

Description:

Unique and affordable 78 acre parcel surrounded by public land minutes south of Cass Lake. Features: 700+ feet of lakeshore on Little Moss Lake, cleared site for a cabin & travel trailer. This land is mostly wetland, but it is super unique, private, and near many lakes including Steamboat, Portage, Pike Bay and Lake Thirteen. Access is via a forest trail that is easily drivable with a car. (Deer stands not included.)

Additional Details:

Lot Acres	78
Lot Dimensions	1320x2620
School District	115
Taxes	\$250
Taxes with Assessments	\$250
Tax Year	2024

Additional Features:

Driving Directions:

From Cass Lake: South on 371 6 miles to 136th Street(144), then east 2.2 miles on 136th Street to 56th Avenue. South on 56th Avenue .8 miles to a Forestry Trail. East on the trail .3 miles to the property.



Listed By:
Century 21 Dickinson

Affinity Real Estate Inc. participates in the Regional Multiple Listing Service of Minnesota, Inc Broker Reciprocity (sm) program, allowing us to display other broker's listings on our website. All properties are subject to prior sale, change or withdrawal.



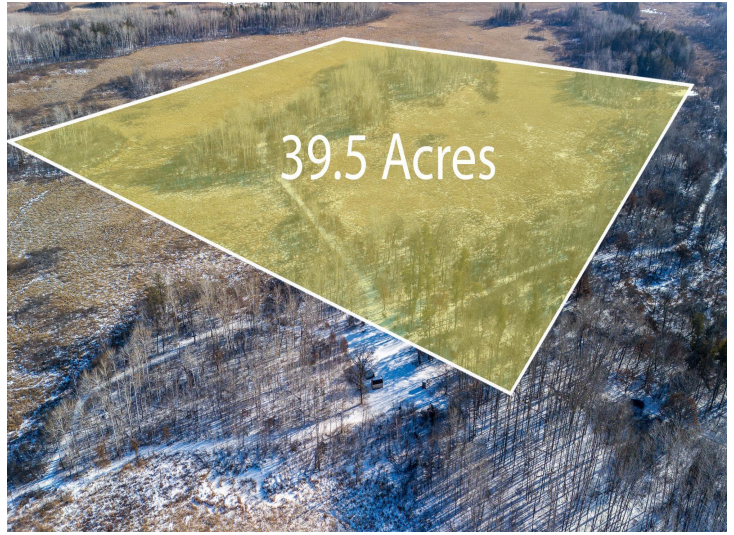
Call Affinity Real Estate

218-237-3333

info@affinityrealestate.com



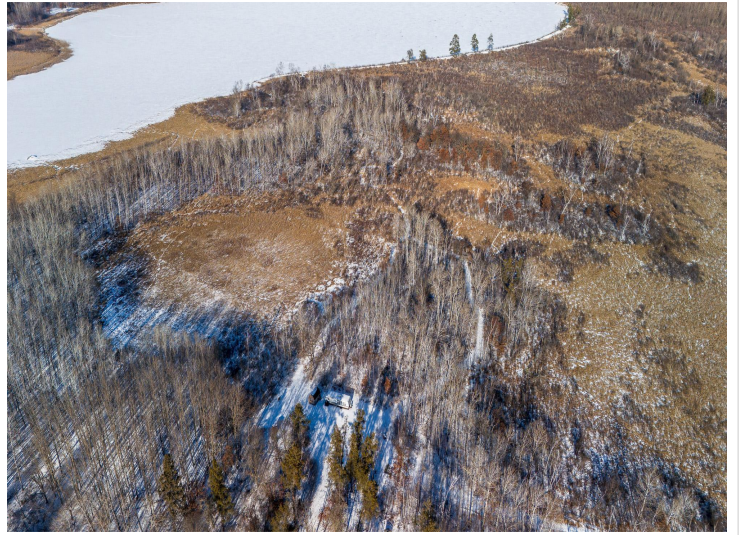
Affinity Real Estate - 600 Park Avenue South - Park Rapids MN 56470



website: www.AffinityRealEstate.com | email: info@affinityrealestate.com | office: 218-237-3333 | fax: 218-237-3377



\$125,000
MLS 6647843 Lake Land
TBD 56th Avenue
Cass Lake MN 56633



website: www.AffinityRealEstate.com | email: info@affinityrealestate.com | office: 218-237-3333 | fax:218-237-3377



\$125,000
MLS 6647843 Lake Land
TBD 56th Avenue
Cass Lake MN 56633



website: www.AffinityRealEstate.com | email: info@affinityrealestate.com | office: 218-237-3333 | fax:218-237-3377



\$125,000
MLS 6647843 Lake Land
TBD 56th Avenue
Cass Lake MN 56633