



MLS 6648134 Residential

\$448,900

2,600 sq ft
6 bedrooms
3 baths

19010 County Highway 29
Detroit Lakes MN 56501

Status: Active

Description:

Located only 9 miles from Detroit Lakes and Frazee, this property has everything you need! Peaceful and private 3 acre lot with mixed woods and a nice yard. Split level 6 bedroom homestead with attached heated garage and detached heated shop. Upper level includes an open concept kitchen, living room, and dining area with a walkout to the deck from the dining area. 3 bedrooms and 2 baths also on the upper level. Lower level includes a large family room, 3 bedrooms, 1 full bath, and the utility/laundry room. 24x26 heated attached garage with electric heat. Detached shop is 26x35 insulated and heated with propane heat, 12 ft sidewalls and 10ft garage door height. Additional 10x36 lean-to with cement floor and 7x10 garage door with cold storage. Other attractions include: close to restaruants, snowmobile and atv trails, multiple lakes including Cotton, Perch, Pickerel, and Height of Land, and close to the Ottertail River.

Additional Details:

Year Built	2006
Lot Acres	3
Lot Dimensions	250x526
Garage Stalls	2
School District	23
Taxes	\$2,522
Taxes with Assessments	\$2,522
Tax Year	2024

Additional Features:

Fuel: Electric, Propane **Heat:** Baseboard, Forced Air, Fireplace(s)

Driving Directions:

From Detroit Lakes: Head East on St. Hwy 34 for 7.5 miles, turn left and head north on Co Hwy 29 for 1 mile to the address on the left side. Frazee: north on Co Hwy 29, cross 34 and continue on 29 for one mile to the address on the left side.



Listed By:
Counselor Realty Detroit Lakes

Affinity Real Estate Inc. participates in the Regional Multiple Listing Service of Minnesota, Inc Broker Reciprocity (sm) program, allowing us to display other broker's listings on our website. All properties are subject to prior sale, change or withdrawal.



Call Affinity Real Estate

218-237-3333

info@affinityrealestate.com



Affinity Real Estate - 600 Park Avenue South - Park Rapids MN 56470



website: www.AffinityRealEstate.com | email: info@affinityrealestate.com | office: 218-237-3333 | fax: 218-237-3377

Affinity
REAL ESTATE INC

\$448,900
MLS 6648134 Residential
19010 County Highway 29
Detroit Lakes MN 56501



website: www.AffinityRealEstate.com | email: info@affinityrealestate.com | office: 218-237-3333 | fax:218-237-3377



\$448,900
MLS 6648134 Residential
19010 County Highway 29
Detroit Lakes MN 56501



website: www.AffinityRealEstate.com | email: info@affinityrealestate.com | office: 218-237-3333 | fax:218-237-3377



\$448,900
MLS 6648134 Residential
19010 County Highway 29
Detroit Lakes MN 56501



website: www.AffinityRealEstate.com | email: info@affinityrealestate.com | office: 218-237-3333 | fax:218-237-3377



\$448,900
MLS 6648134 Residential
19010 County Highway 29
Detroit Lakes MN 56501



website: www.AffinityRealEstate.com | email: info@affinityrealestate.com | office: 218-237-3333 | fax:218-237-3377

Affinity
REAL ESTATE INC

\$448,900
MLS 6648134 Residential
19010 County Highway 29
Detroit Lakes MN 56501



website: www.AffinityRealEstate.com | email: info@affinityrealestate.com | office: 218-237-3333 | fax: 218-237-3377

Affinity
REAL ESTATE INC

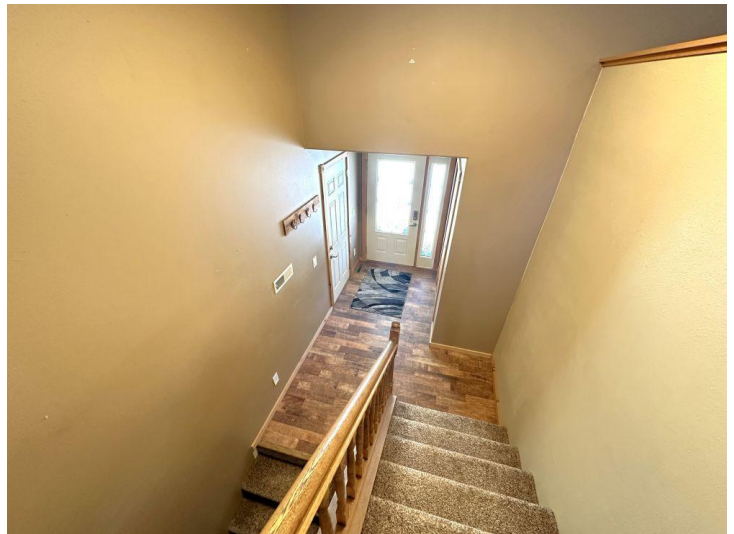
\$448,900
MLS 6648134 Residential
19010 County Highway 29
Detroit Lakes MN 56501



website: www.AffinityRealEstate.com | email: info@affinityrealestate.com | office: 218-237-3333 | fax:218-237-3377



\$448,900
MLS 6648134 Residential
19010 County Highway 29
Detroit Lakes MN 56501



website: www.AffinityRealEstate.com | email: info@affinityrealestate.com | office: 218-237-3333 | fax:218-237-3377



\$448,900
MLS 6648134 Residential
19010 County Highway 29
Detroit Lakes MN 56501



website: www.AffinityRealEstate.com | email: info@affinityrealestate.com | office: 218-237-3333 | fax: 218-237-3377

Affinity
REAL ESTATE INC

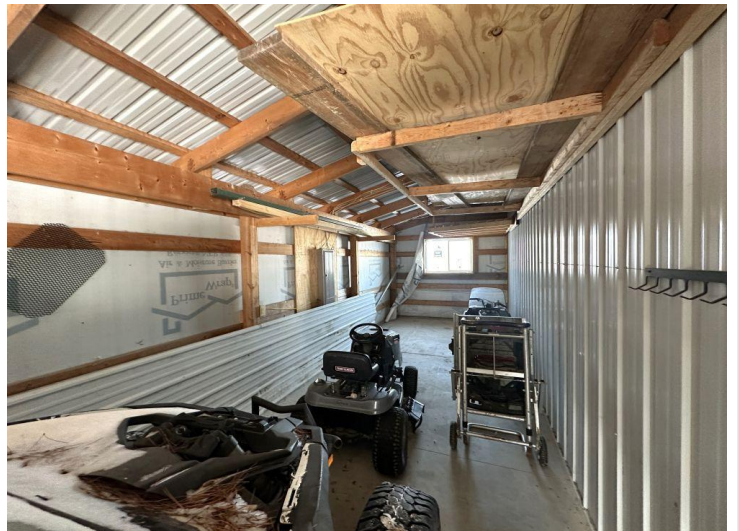
\$448,900
MLS 6648134 Residential
19010 County Highway 29
Detroit Lakes MN 56501



website: www.AffinityRealEstate.com | email: info@affinityrealestate.com | office: 218-237-3333 | fax:218-237-3377



\$448,900
MLS 6648134 Residential
19010 County Highway 29
Detroit Lakes MN 56501



website: www.AffinityRealEstate.com | email: info@affinityrealestate.com | office: 218-237-3333 | fax:218-237-3377

Affinity
REAL ESTATE INC

\$448,900
MLS 6648134 Residential
19010 County Highway 29
Detroit Lakes MN 56501