



MLS 6649485 Residential

\$675,000

2,774 sq ft
3 bedrooms
2 baths

23567 Timber Trail Drive
Bemidji MN 56601


Status: Active

Description:

Welcome to your dream home! Nestled in the perfect location just south of Bemidji, this gorgeous 3-bedroom, 2-bath home offers an exceptional blend of luxury, comfort, and functionality. Situated on 5 expansive acres, this property is ideal for those seeking both privacy and proximity to town. Step inside and be greeted by a spacious open floor plan, enhanced by vaulted ceilings. The thoughtful design flows seamlessly from room to room, making it perfect for both everyday living and entertaining. The heart of the home is the expansive living area, where you can cozy up by the double-sided fireplace that provides warmth and ambiance to both the living room and the adjoining family room. The custom kitchen is a chef's delight, featuring updated appliances, ample counter space, and custom cabinetry. It's designed to make meal preparation both enjoyable and efficient. Adjacent to the kitchen, you'll find a huge mudroom and laundry room, offering practicality and convenience. The primary suite is a true retreat, boasting two generous walk-in closets and a luxurious en-suite bath. Pamper yourself in the large bath, complete with a jet tub and a beautifully tiled shower. The home's layout includes wide hallways, enhancing the open feel and ensuring easy movement throughout the space. Outside, the property continues to impress with its amenities. The 28x30 double attached heated garage provides ample space for vehicles and storage. For those who need more room to work or play, the 52x48 finished and heated shop is a standout feature. This shop includes a new 20x48 addition, which has been spray-foamed, finished, and equipped with floor heat, making it a versatile space for any project or hobby. The back patio is an inviting outdoor space, featuring stamped concrete and a hot tub – the perfect spot to unwind while overlooking the beautifully landscaped, private backyard. Enjoy the raised garden bed and the serene views of your own piece of paradise. This exceptional property offers the ideal balance of luxury and practicality, with every detail thoughtfully considered. Whether you're looking for a peaceful retreat or a home with space to accommodate hobbies and projects, this property is sure to exceed your expectations.

Additional Details:

Year Built	2008
Lot Acres	5
Lot Dimensions	330x980
Garage Stalls	2
School District	31
Taxes	\$3,976


 Listed By: **2024**
 218 Real Estate
 Affinity Real Estate Inc. participates in the Regional Multiple Listing Service of Minnesota, Inc Broker Reciprocity (sm) program, allowing
Additional Features:
 Basement with Full Kitchen, Open Garage, All Hardwood Floors, Water Proofed, Air Conditioning, Central Air



Call Affinity Real Estate
218-237-3333
info@affinityrealestate.com




 ver: Private Sewer

Affinity Real Estate - 600 Park Avenue South - Park Rapids MN 56470

Driving Directions:

©2025 Acme Webwerks - Affinity Real Estate Inc - Licensed in Minnesota - Brochure v.2019.05.23.2 - 18.118.100.38 - 2025.02.22 17:11:56
 South on 71 to Timber Trail, home on left



website: www.AffinityRealEstate.com | email: info@affinityrealestate.com | office: 218-237-3333 | fax:218-237-3377

Affinity
REAL ESTATE INC

\$675,000
MLS 6649485 Residential
23567 Timber Trail Drive
Bemidji MN 56601



website: www.AffinityRealEstate.com | email: info@affinityrealestate.com | office: 218-237-3333 | fax: 218-237-3377

Affinity
REAL ESTATE INC

\$675,000
MLS 6649485 Residential
23567 Timber Trail Drive
Bemidji MN 56601



website: www.AffinityRealEstate.com | email: info@affinityrealestate.com | office: 218-237-3333 | fax: 218-237-3377

Affinity
REAL ESTATE INC

\$675,000
MLS 6649485 Residential
23567 Timber Trail Drive
Bemidji MN 56601



website: www.AffinityRealEstate.com | email: info@affinityrealestate.com | office: 218-237-3333 | fax: 218-237-3377

Affinity
REAL ESTATE INC

\$675,000
MLS 6649485 Residential
23567 Timber Trail Drive
Bemidji MN 56601



website: www.AffinityRealEstate.com | email: info@affinityrealestate.com | office: 218-237-3333 | fax:218-237-3377

Affinity
REAL ESTATE INC

\$675,000
MLS 6649485 Residential
23567 Timber Trail Drive
Bemidji MN 56601



website: www.AffinityRealEstate.com | email: info@affinityrealestate.com | office: 218-237-3333 | fax:218-237-3377

Affinity
REAL ESTATE INC

\$675,000
MLS 6649485 Residential
23567 Timber Trail Drive
Bemidji MN 56601



website: www.AffinityRealEstate.com | email: info@affinityrealestate.com | office: 218-237-3333 | fax:218-237-3377

Affinity
REAL ESTATE INC

\$675,000
MLS 6649485 Residential
23567 Timber Trail Drive
Bemidji MN 56601



website: www.AffinityRealEstate.com | email: info@affinityrealestate.com | office: 218-237-3333 | fax:218-237-3377

Affinity
REAL ESTATE INC

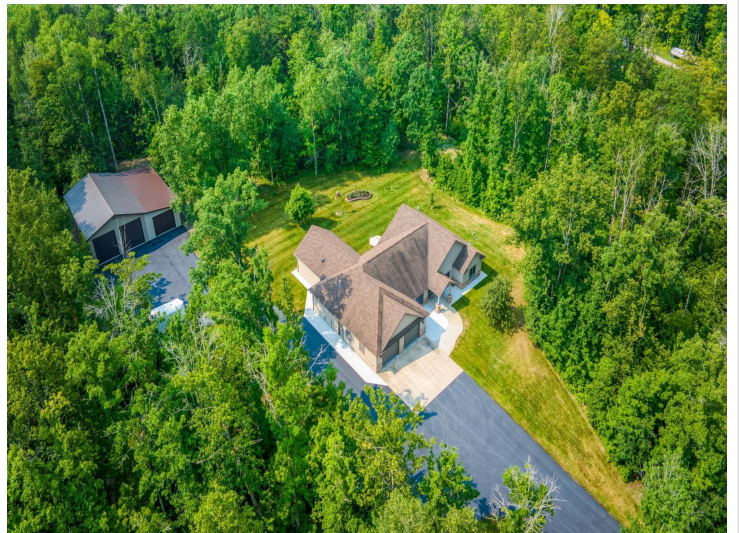
\$675,000
MLS 6649485 Residential
23567 Timber Trail Drive
Bemidji MN 56601



website: www.AffinityRealEstate.com | email: info@affinityrealestate.com | office: 218-237-3333 | fax:218-237-3377

Affinity
REAL ESTATE INC

\$675,000
MLS 6649485 Residential
23567 Timber Trail Drive
Bemidji MN 56601



website: www.AffinityRealEstate.com | email: info@affinityrealestate.com | office: 218-237-3333 | fax:218-237-3377

Affinity
REAL ESTATE INC

\$675,000
MLS 6649485 Residential
23567 Timber Trail Drive
Bemidji MN 56601



website: www.AffinityRealEstate.com | email: info@affinityrealestate.com | office: 218-237-3333 | fax:218-237-3377



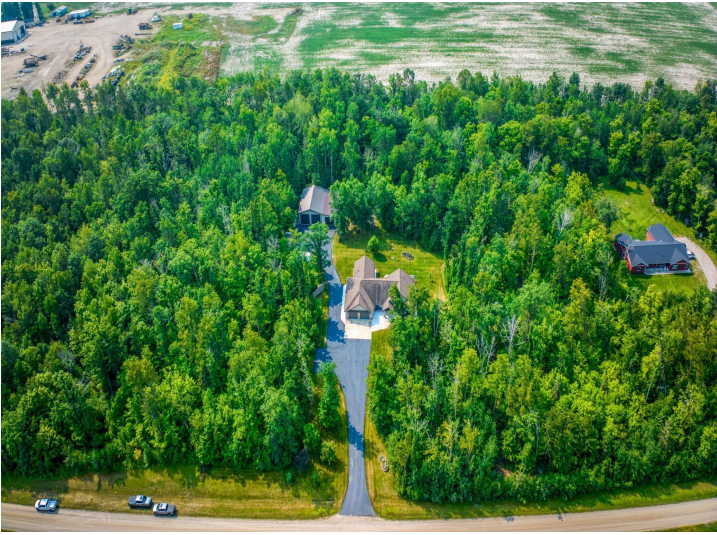
\$675,000
MLS 6649485 Residential
23567 Timber Trail Drive
Bemidji MN 56601



website: www.AffinityRealEstate.com | email: info@affinityrealestate.com | office: 218-237-3333 | fax: 218-237-3377

Affinity
REAL ESTATE INC

\$675,000
MLS 6649485 Residential
23567 Timber Trail Drive
Bemidji MN 56601



website: www.AffinityRealEstate.com | email: info@affinityrealestate.com | office: 218-237-3333 | fax:218-237-3377



\$675,000
MLS 6649485 Residential
23567 Timber Trail Drive
Bemidji MN 56601



website: www.AffinityRealEstate.com | email: info@affinityrealestate.com | office: 218-237-3333 | fax: 218-237-3377

Affinity
REAL ESTATE INC

\$675,000
MLS 6649485 Residential
23567 Timber Trail Drive
Bemidji MN 56601



website: www.AffinityRealEstate.com | email: info@affinityrealestate.com | office: 218-237-3333 | fax:218-237-3377

Affinity
REAL ESTATE INC

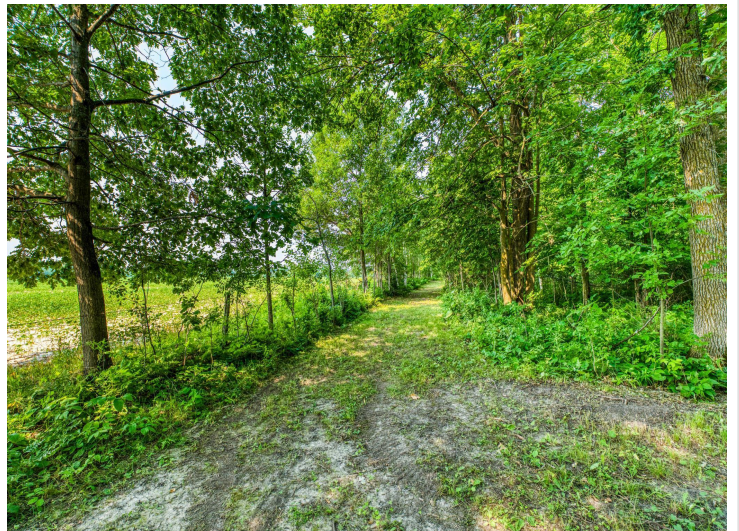
\$675,000
MLS 6649485 Residential
23567 Timber Trail Drive
Bemidji MN 56601



website: www.AffinityRealEstate.com | email: info@affinityrealestate.com | office: 218-237-3333 | fax:218-237-3377

Affinity
REAL ESTATE INC

\$675,000
MLS 6649485 Residential
23567 Timber Trail Drive
Bemidji MN 56601



website: www.AffinityRealEstate.com | email: info@affinityrealestate.com | office: 218-237-3333 | fax:218-237-3377

Affinity
REAL ESTATE INC

\$675,000
MLS 6649485 Residential
23567 Timber Trail Drive
Bemidji MN 56601



website: www.AffinityRealEstate.com | email: info@affinityrealestate.com | office: 218-237-3333 | fax:218-237-3377



\$675,000
MLS 6649485 Residential
23567 Timber Trail Drive
Bemidji MN 56601



website: www.AffinityRealEstate.com | email: info@affinityrealestate.com | office: 218-237-3333 | fax:218-237-3377



\$675,000
MLS 6649485 Residential
23567 Timber Trail Drive
Bemidji MN 56601