



MLS 6650120 Lake Home

\$929,900

3,094 sq ft
5 bedrooms
4 baths

8038 Lost Lake Road
Nisswa MN 56468

Waterfront: Gull

Status: Active

Description:

Newly Completed Lake Home in the Gull Lake Chain of Lakes. This home is the 6th of 9 total lake homes to be built in Spider Lake Preserve. This private community is a small single-family home community in the City of Lake Shore. This 35-acre community is nestled amongst Lost Lake Lodge, Causeway on Gull, Bar Harbor, Zorbaz, golf courses, and so much more. This private community has its own dock area, lake side patio and firepit area, pickleball court, private path system and fine homes built by Thomas Allen Homes. This walk-out rambler home 5bd/4ba includes front and rear decks, lower-level patio, landscaping, 2 fireplaces, full bar in LL, tile shower custom cabinets, interior beam work, and more. Are you ready for Gull Lake in 2025? Here is your opportunity to enjoy a new lake home with no maintenance needs! The last 3 lots are also available for your consideration.

Additional Details:

Year Built	2024
Lot Acres	0.12
Lot Dimensions	64x83 Build Pad
Garage Stalls	3
School District	181
Taxes	(unreported)
Taxes with Assessments	(unreported)
Tax Year	2024

Additional Features:

Basement: Finished, Walkout **Fuel:** Natural Gas **Garage:** 3 **Heat:** Forced Air, Fireplace(s) **Sewer:** City Sewer/Connected **Water:** Shared System, Well **Air Conditioning:** Central Air

Driving Directions:

From Highway 371 in Nisswa, take Country Rd 77 West to Zorbaz. Turn Right on Lost Lake Road to Community on your right.



Listed By:
Edina Realty, Inc.

Affinity Real Estate Inc. participates in the Regional Multiple Listing Service of Minnesota, Inc Broker Reciprocity (sm) program, allowing us to display other broker's listings on our website. All properties are subject to prior sale, change or withdrawal.



Call Affinity Real Estate

218-237-3333

info@affinityrealestate.com



Affinity Real Estate - 600 Park Avenue South - Park Rapids MN 56470



website: www.AffinityRealEstate.com | email: info@affinityrealestate.com | office: 218-237-3333 | fax: 218-237-3377

Affinity
REAL ESTATE INC

\$929,900
MLS 6650120 Lake Home
8038 Lost Lake Road
Nisswa MN 56468



website: www.AffinityRealEstate.com | email: info@affinityrealestate.com | office: 218-237-3333 | fax:218-237-3377

Affinity
REAL ESTATE INC

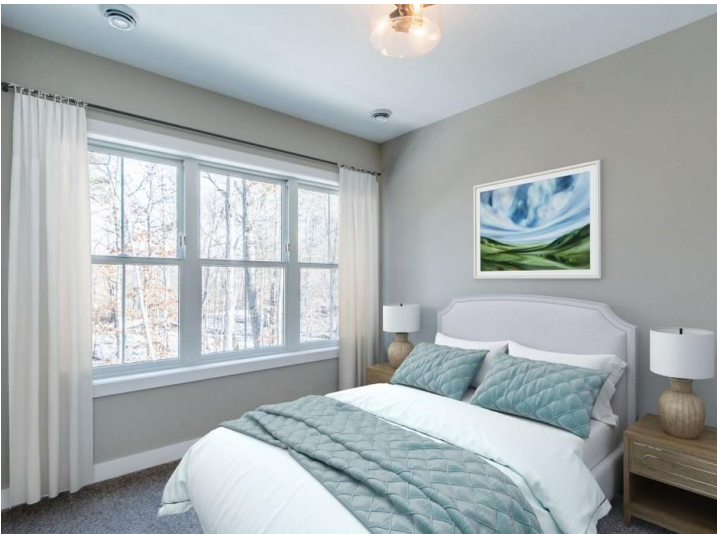
\$929,900
MLS 6650120 Lake Home
8038 Lost Lake Road
Nisswa MN 56468



website: www.AffinityRealEstate.com | email: info@affinityrealestate.com | office: 218-237-3333 | fax:218-237-3377



\$929,900
MLS 6650120 Lake Home
8038 Lost Lake Road
Nisswa MN 56468



website: www.AffinityRealEstate.com | email: info@affinityrealestate.com | office: 218-237-3333 | fax:218-237-3377



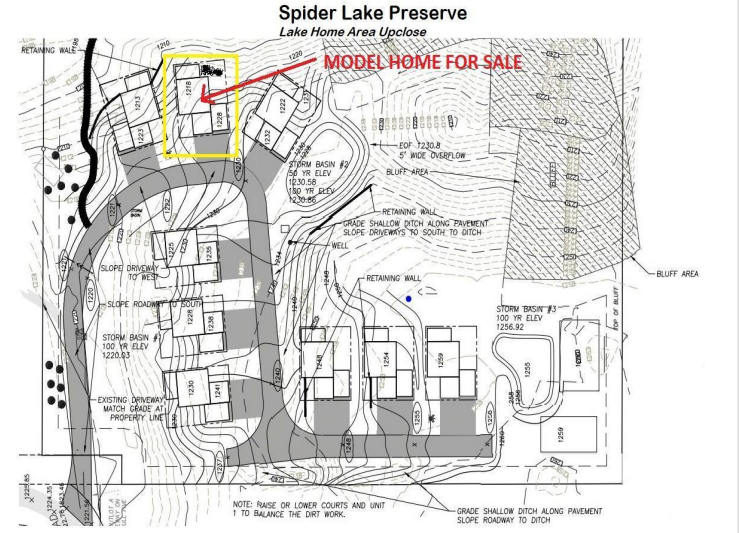
\$929,900
MLS 6650120 Lake Home
8038 Lost Lake Road
Nisswa MN 56468



website: www.AffinityRealEstate.com | email: info@affinityrealestate.com | office: 218-237-3333 | fax:218-237-3377



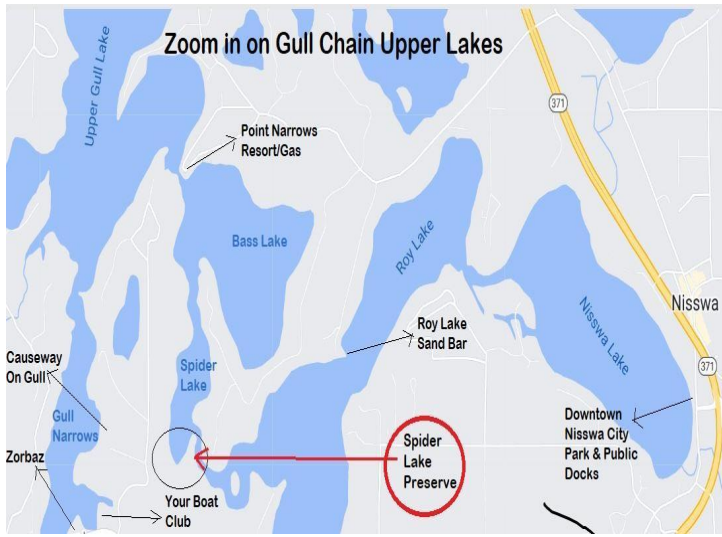
\$929,900
MLS 6650120 Lake Home
8038 Lost Lake Road
Nisswa MN 56468



website: www.AffinityRealEstate.com | email: info@affinityrealestate.com | office: 218-237-3333 | fax: 218-237-3377



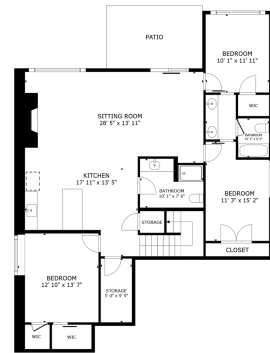
\$929,900
 MLS 6650120 Lake Home
 8038 Lost Lake Road
 Nisswa MN 56468



website: www.AffinityRealEstate.com | email: info@affinityrealestate.com | office: 218-237-3333 | fax: 218-237-3377



\$929,900
 MLS 6650120 Lake Home
 8038 Lost Lake Road
 Nisswa MN 56468



FLOOR 1

GROSS INTERNAL AREA
 FLOOR 1 1,415 sq.ft., FLOOR 2 1,564 sq.ft.,
 EXCLUDED AREAS: PATIO 147 sq.ft., GARAGE 737 sq.ft., DECK 248 sq.ft., DECK 125 sq.ft.,
 TOTAL: 2,879 sq.ft.
SIZE AND DIMENSIONS ARE APPROXIMATE, ACTUAL MAY VARY.



FLOOR 2

GROSS INTERNAL AREA
 FLOOR 1 1,415 sq.ft., FLOOR 2 1,564 sq.ft.,
 EXCLUDED AREAS: PATIO 147 sq.ft., GARAGE 737 sq.ft., DECK 248 sq.ft., DECK 125 sq.ft.,
 TOTAL: 2,879 sq.ft.
SIZE AND DIMENSIONS ARE APPROXIMATE, ACTUAL MAY VARY.



website: www.AffinityRealEstate.com | email: info@affinityrealestate.com | office: 218-237-3333 | fax: 218-237-3377



\$929,900
 MLS 6650120 Lake Home
 8038 Lost Lake Road
 Nisswa MN 56468