



MLS 6650171 Lake Home

\$875,000

3,024 sq ft
4 bedrooms
3 baths

8038 Lost Lake Road
Nisswa MN 56468

Waterfront: Gull

Status: Active

Description:

Spider Lake Preserve on the Gull Lake Chain is filling up. This build will be the 7th of a total of 9 homes. It is located at 8038 Lost Lake Rd, this lake home plan can be view 2 doors down while it is approaching completion. Think now for Gull Lake enjoyment in 2025!

On top of this new lake home, 2 other lots remain for your consideration. This community is a small & private single-family lake home community in the City of Lake Shore. This 35-acre community is nestled amongst Lost Lake Lodge, Causeway on Gull, Bar Harbor, Zorbaz, golf courses, and so much more. It is a private community with its own dock area, lake side patio and firepit area, pickleball court, private path system and fine homes built by Thomas Allen Homes. This walk-out rambler home 4bd/3ba includes front and rear decks, lower-level patio, landscaping, fireplace, custom cabinets, and more.

Additional Details:

Year Built	2024
Lot Acres	0.23
Lot Dimensions	irr
Garage Stalls	2
School District	181
Taxes	\$220
Taxes with Assessments	\$220
Tax Year	2025

Additional Features:

Fuel: Natural Gas **Heat:** Forced Air

Driving Directions:

Brainerd, North on 371 to West on Cty 77 (sportsman corner) to Right on Lost Lake Rd by Zorba's FROM Nisswa, 371 South, west on Cty 77 to right on Lost Lake Rd.s.



Listed By:
Edina Realty, Inc.

Affinity Real Estate Inc. participates in the Regional Multiple Listing Service of Minnesota, Inc Broker Reciprocity (sm) program, allowing us to display other broker's listings on our website. All properties are subject to prior sale, change or withdrawal.



Call Affinity Real Estate

218-237-3333

info@affinityrealestate.com



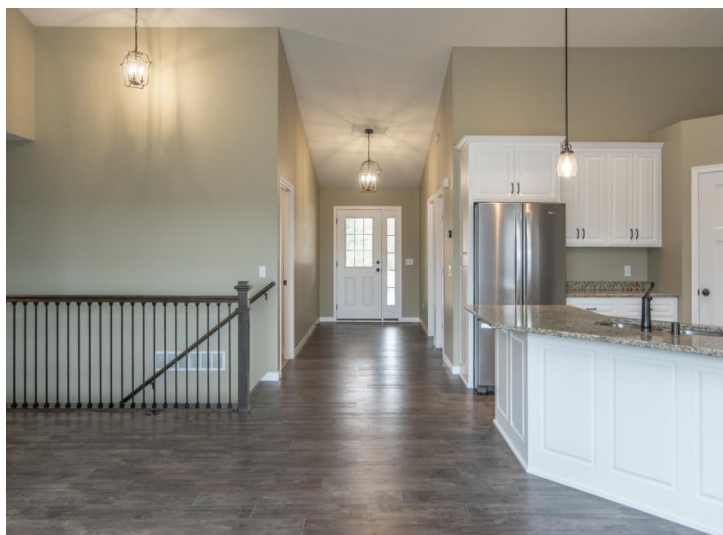
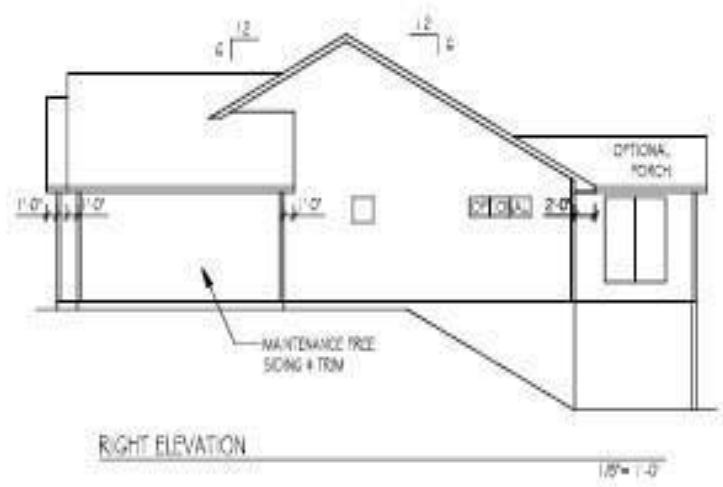
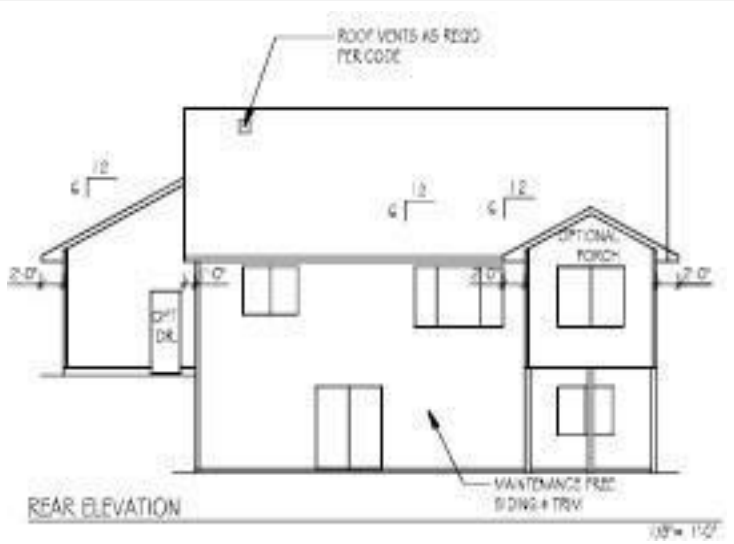
Affinity Real Estate - 600 Park Avenue South - Park Rapids MN 56470



website: www.AffinityRealEstate.com | email: info@affinityrealestate.com | office: 218-237-3333 | fax: 218-237-3377



\$875,000
 MLS 6650171 Lake Home
 8038 Lost Lake Road
 Nisswa MN 56468



website: www.AffinityRealEstate.com | email: info@affinityrealestate.com | office: 218-237-3333 | fax:218-237-3377



\$875,000
 MLS 6650171 Lake Home
 8038 Lost Lake Road
 Nisswa MN 56468



website: www.AffinityRealEstate.com | email: info@affinityrealestate.com | office: 218-237-3333 | fax:218-237-3377

Affinity
REAL ESTATE INC

\$875,000
MLS 6650171 Lake Home
8038 Lost Lake Road
Nisswa MN 56468



website: www.AffinityRealEstate.com | email: info@affinityrealestate.com | office: 218-237-3333 | fax:218-237-3377



\$875,000
MLS 6650171 Lake Home
8038 Lost Lake Road
Nisswa MN 56468



website: www.AffinityRealEstate.com | email: info@affinityrealestate.com | office: 218-237-3333 | fax:218-237-3377

Affinity
REAL ESTATE INC

\$875,000
MLS 6650171 Lake Home
8038 Lost Lake Road
Nisswa MN 56468



website: www.AffinityRealEstate.com | email: info@affinityrealestate.com | office: 218-237-3333 | fax:218-237-3377



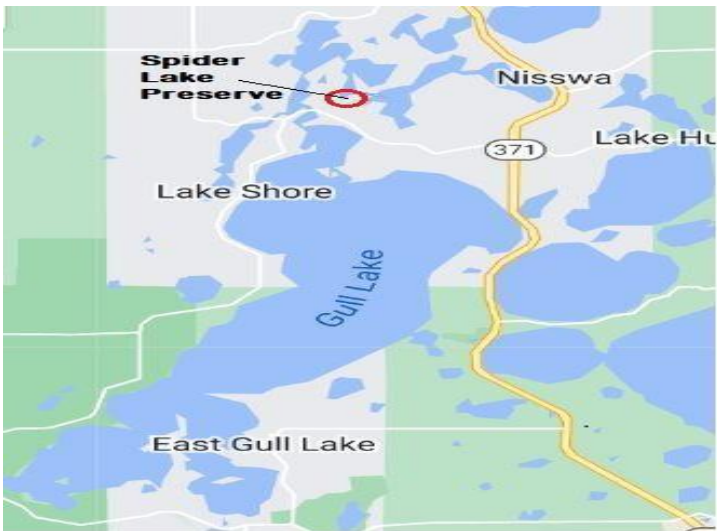
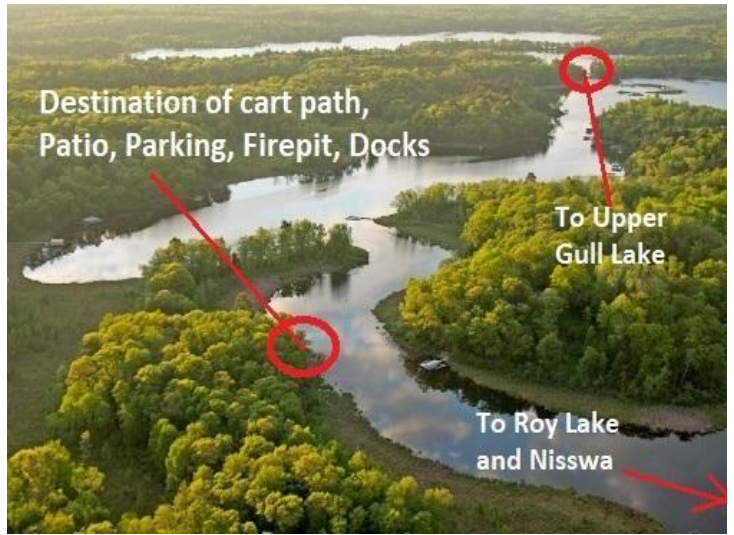
\$875,000
MLS 6650171 Lake Home
8038 Lost Lake Road
Nisswa MN 56468

SPIDER LAKE

Preserve

ON THE GULL LAKE CHAIN

- | | |
|------------------------------------|--------------------------------|
| Spider Lake on Gull Lake Chain | Outdoor Fireplace |
| Outdoor Patio | Pickleball Court |
| Grill/ Cookouts | Cart to Boat or Out for Dinner |
| Bike in the Beautiful Surroundings | Boat Ramp on Gull Lake |
| Dining; Zorbaz, Lost Lake Lodge | Great Hiking & Walking |



website: www.AffinityRealEstate.com | email: info@affinityrealestate.com | office: 218-237-3333 | fax: 218-237-3377



\$875,000
 MLS 6650171 Lake Home
 8038 Lost Lake Road
 Nisswa MN 56468