



MLS 6650330 Lake Home

\$224,900

1,144 sq ft
2 bedrooms
1 baths

121 County 118
Backus MN 56435

Waterfront: Hattie (main lake)

Status: Pending

Description:

"Well-maintained 2-bedroom, 1-bath cabin on Lake Hattie with a 2008 addition featuring knotty pine T&G throughout, a large deck, and a new roof! Enjoy fishing, canoeing, kayaking, and more on this serene lake. Located in a well-established common interest community with a new dock system and your own boat slip. Don't miss this affordable getaway!"

Additional Details:

| | |
|------------------------|-------|
| Year Built | 2008 |
| Lot Acres | 0.09 |
| Lot Dimensions | 84x50 |
| School District | 2174 |
| Taxes | \$768 |
| Taxes with Assessments | \$834 |
| Tax Year | 2024 |

Additional Features:

Fuel: Electric, Wood **Heat:** Baseboard, Wood Stove

Driving Directions:

From Pine River Hwy 84 north approx 8 miles to County Rd 118 (Harriet Club). Turn right on to Cty 118 (Division St) for 1 mile continue to the right for 1/2 mile to 121 Rest in The Pines on left, unit 6 on right.



Listed By:
eXp Realty

Affinity Real Estate Inc. participates in the Regional Multiple Listing Service of Minnesota, Inc Broker Reciprocity (sm) program, allowing us to display other broker's listings on our website. All properties are subject to prior sale, change or withdrawal.



Call Affinity Real Estate

218-237-3333

info@affinityrealestate.com



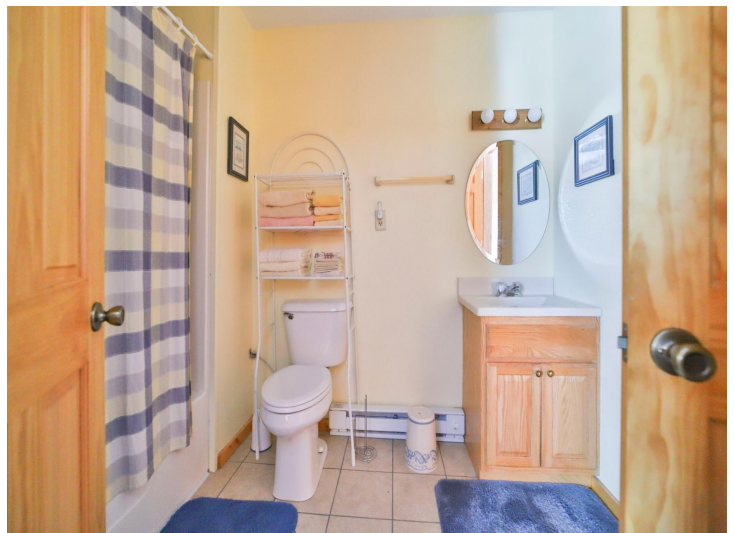
Affinity Real Estate - 600 Park Avenue South - Park Rapids MN 56470



website: www.AffinityRealEstate.com | email: info@affinityrealestate.com | office: 218-237-3333 | fax: 218-237-3377

Affinity
REAL ESTATE INC

\$224,900
MLS 6650330 Lake Home
121 County 118
Backus MN 56435



website: www.AffinityRealEstate.com | email: info@affinityrealestate.com | office: 218-237-3333 | fax:218-237-3377

Affinity
REAL ESTATE INC

\$224,900
MLS 6650330 Lake Home
121 County 118
Backus MN 56435



website: www.AffinityRealEstate.com | email: info@affinityrealestate.com | office: 218-237-3333 | fax:218-237-3377

Affinity
REAL ESTATE INC

\$224,900
MLS 6650330 Lake Home
121 County 118
Backus MN 56435



website: www.AffinityRealEstate.com | email: info@affinityrealestate.com | office: 218-237-3333 | fax:218-237-3377

Affinity
REAL ESTATE INC

\$224,900
MLS 6650330 Lake Home
121 County 118
Backus MN 56435



website: www.AffinityRealEstate.com | email: info@affinityrealestate.com | office: 218-237-3333 | fax:218-237-3377

Affinity
REAL ESTATE INC

\$224,900
MLS 6650330 Lake Home
121 County 118
Backus MN 56435



website: www.AffinityRealEstate.com | email: info@affinityrealestate.com | office: 218-237-3333 | fax:218-237-3377



\$224,900
MLS 6650330 Lake Home
121 County 118
Backus MN 56435