



MLS 6650371 Land

**\$26,500**

1.13 Acres  
Raw Land

TBD Edgewood Drive  
Bemidji MN 56601

Status: Active

**Description:**

Premium building lot located only 5 minutes (3.5 miles) from downtown Bemidji on a paved road! Heavily wooded lots with nice mixture of hardwoods and conifer trees, sandy soil offering good drainage, frontage on paved road to the west (Little Norway Ave) and gravel road on the east (Edgewood Drive). Access to electric, phone, and internet. No special assessments. All located in the beautiful Forest Park Subdivision!

**Additional Details:**

Lot Acres	1.13
Lot Dimensions	150x323.53x150x312.26
School District	31
Taxes	\$158
Taxes with Assessments	\$158
Tax Year	2024

**Additional Features:**

**Driving Directions:**

Paul Bunyan Dr South, go 1 mi So of Roosevelt to 23rd St, L on 23rd St for 1/2 mi to Little Norway, L on Little Norway to Maplewood Dr, continue to Edgewood Dr, Right, lot is on Right. (Lot fronts Little Norway and Edgewood Dr).



Listed By:  
Realty Experts, LLC

Affinity Real Estate Inc. participates in the Regional Multiple Listing Service of Minnesota, Inc Broker Reciprocity (sm) program, allowing us to display other broker's listings on our website. All properties are subject to prior sale, change or withdrawal.



Call Affinity Real Estate

**218-237-3333**

[info@affinityrealestate.com](mailto:info@affinityrealestate.com)



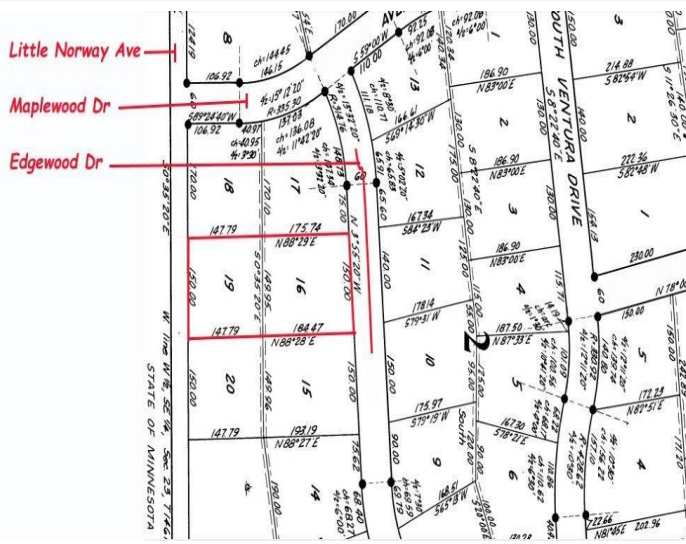
Affinity Real Estate - 600 Park Avenue South - Park Rapids MN 56470



website: [www.AffinityRealEstate.com](http://www.AffinityRealEstate.com) | email: [info@affinityrealestate.com](mailto:info@affinityrealestate.com) | office: 218-237-3333 | fax:218-237-3377



**\$26,500**  
MLS 6650371 Land  
TBD Edgewood Drive  
Bemidji MN 56601



website: [www.AffinityRealEstate.com](http://www.AffinityRealEstate.com) | email: [info@affinityrealestate.com](mailto:info@affinityrealestate.com) | office: 218-237-3333 | fax:218-237-3377



**\$26,500**  
 MLS 6650371 Land  
 TBD Edgewood Drive  
 Bemidji MN 56601