



MLS 6650800 Land

**\$47,000**

7.33 Acres  
Raw Land

44081 590th Avenue  
Sebeka MN 56477

Status: Active

**Description:**

Location is key! Whether you plan on building your dream hobby farm or just need a smaller tract of land to hunt, this remote parcel is ideal! Located just south of Hillview, this area is well known for producing top-end whitetail, along with turkey, grouse, and even bear. The 7.33± acres is all high ground and features 3± acres of tillable. The large 40'x60' quonset has good bones and can easily be brought back to life by replacing the ends. A few large oak trees spread throughout the property's borders would be perfect for bowhunters needing to hunt different wind directions. Land in this area is extremely sought after; don't miss out on this great opportunity!

**Additional Details:**

Lot Acres	7.33
Lot Dimensions	acres
School District	820
Taxes	\$432
Taxes with Assessments	\$432
Tax Year	2024

**Additional Features:**

**Driving Directions:**

From Sebeka, head west on 280th St/Co Hwy 8 for 6 mi. Left onto 5th St for 2mi. Right onto Co Hwy 58 for 1 mi. Right onto 590th Ave, property is on the left.



Listed By:  
Whitetail Properties Real

Affinity Real Estate Inc. participates in the Regional Multiple Listing Service of Minnesota, Inc Broker Reciprocity (sm) program, allowing us to display other broker's listings on our website. All properties are subject to prior sale, change or withdrawal.



**Call Affinity Real Estate**

**218-237-3333**

**info@affinityrealestate.com**



**Affinity Real Estate - 600 Park Avenue South - Park Rapids MN 56470**





website: [www.AffinityRealEstate.com](http://www.AffinityRealEstate.com) | email: [info@affinityrealestate.com](mailto:info@affinityrealestate.com) | office: 218-237-3333 | fax:218-237-3377



**\$47,000**  
MLS 6650800 Land  
44081 590th Avenue  
Sebeka MN 56477





website: [www.AffinityRealEstate.com](http://www.AffinityRealEstate.com) | email: [info@affinityrealestate.com](mailto:info@affinityrealestate.com) | office: 218-237-3333 | fax:218-237-3377



**\$47,000**  
MLS 6650800 Land  
44081 590th Avenue  
Sebeka MN 56477



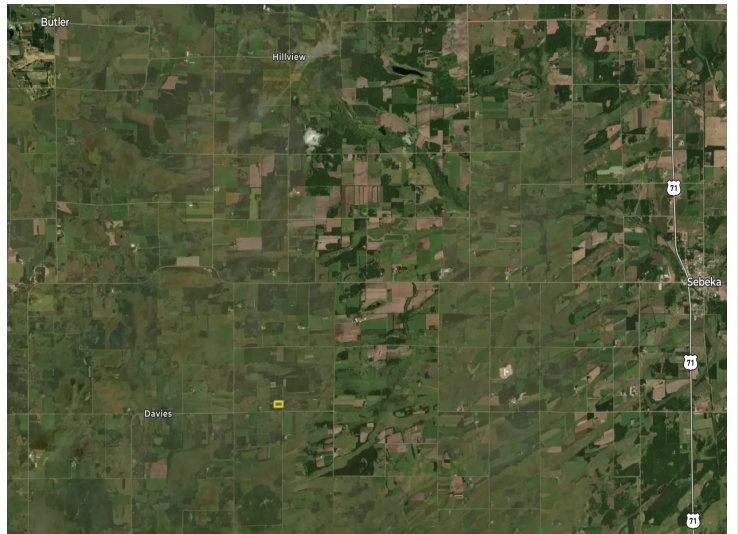
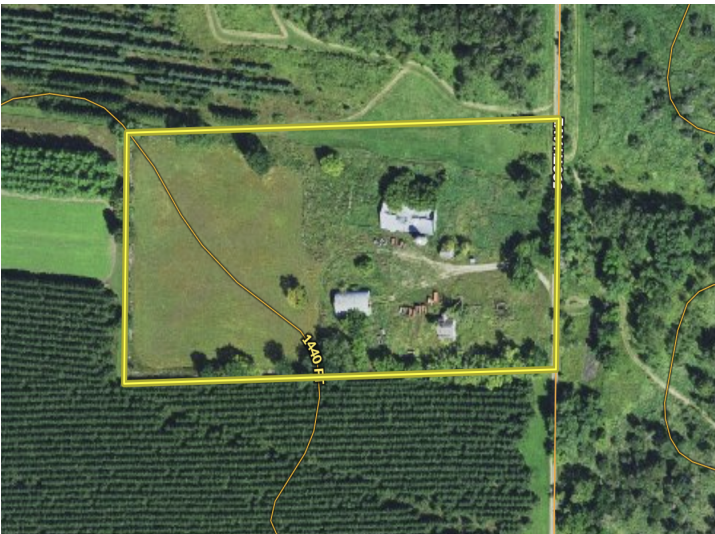


website: [www.AffinityRealEstate.com](http://www.AffinityRealEstate.com) | email: [info@affinityrealestate.com](mailto:info@affinityrealestate.com) | office: 218-237-3333 | fax:218-237-3377



**\$47,000**  
MLS 6650800 Land  
44081 590th Avenue  
Sebeka MN 56477





website: [www.AffinityRealEstate.com](http://www.AffinityRealEstate.com) | email: [info@affinityrealestate.com](mailto:info@affinityrealestate.com) | office: 218-237-3333 | fax:218-237-3377



**\$47,000**  
MLS 6650800 Land  
44081 590th Avenue  
Sebekka MN 56477