

MLS 6650880 Land

\$43,000

0.66 Acres
Finished Lot(s)

2502 Adaline Lane
Detroit Lakes MN 56501

Status: Active

Description:

READY TO BUILD LOT IN SCENIC AREA Three Lakes is a new residential development located on Long Lake Drive in a scenic area nestled between Long Lake, Munson Lake and St. Clair Lake; and located within the Detroit Lakes city limits. All 11 lots are ready to build and more than 1/2 an acre, allowing plenty of space for your custom dream home and 3 car garage/shed. Surrounded by blue water lakes, mature oaks and a scenic landscape just 5 minutes from downtown Detroit Lakes, Long Lake Park, and Munson Lake public access. Includes paved curb and gutter streets, city water hookups, and sanitary sewer and storm sewer connections so no well or septic system expense is necessary. Lot construction was managed by the City of Detroit Lakes. Additional amenities including a pocket park will be provided as the next stages of the development are completed. Current plans envision 70 to 100 homes. Don't have a builder? Ask about incentives.

Additional Details:

Lot Acres	0.66
Lot Dimensions	irr
School District	22
Taxes	\$188
Taxes with Assessments	\$208
Tax Year	2024

Additional Features:

Driving Directions:

At the intersection of Highway 59 and Willow Street in Detroit Lakes, head west at the traffic circle to Willow Street West and continue on Long Lake Road for 1.5 miles and turn left on Adaline Lane.



Listed By:
The Real Estate Company of Detroit Lakes

Affinity Real Estate Inc. participates in the Regional Multiple Listing Service of Minnesota, Inc Broker Reciprocity (sm) program, allowing us to display other broker's listings on our website. All properties are subject to prior sale, change or withdrawal.



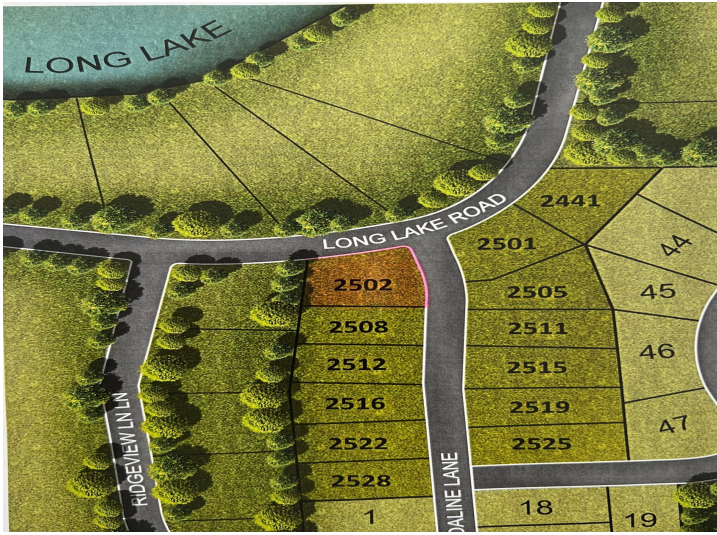
Call Affinity Real Estate

218-237-3333

info@affinityrealestate.com



Affinity Real Estate - 600 Park Avenue South - Park Rapids MN 56470



website: www.AffinityRealEstate.com | email: info@affinityrealestate.com | office: 218-237-3333 | fax:218-237-3377



\$43,000
 MLS 6650880 Land
 2502 Adaline Lane
 Detroit Lakes MN 56501