



MLS 6651562 Residential

\$445,000

1,738 sq ft
3 bedrooms
2 baths

15104 Wild Avenue
Brainerd MN 56401

Status: Active

Description:

Welcome to easy living at its finest! This remarkable 2019 Thomas Allen Home offers a seamless, step-free, one-level layout, ensuring ultimate accessibility. Boasting 3 bedrooms, 2 bathrooms, and a generous 3-stall heated garage, this home is adorned with premium upgrades. Experience the grandeur of vaulted ceilings in the open-concept living areas and admire the craftsmanship of custom-built cabinetry throughout. A private owner's suite provides a peaceful sanctuary, and the large mudroom/laundry room enhances daily convenience. Located in the coveted "Spruce Reserve," a maintenance-free community, you'll enjoy the Brainerd Lakes Area lifestyle without the hassle of lawn care or snow removal. This exceptional home is ready to impress—schedule your tour today!

Additional Details:

Year Built	2019
Lot Acres	0.4
Lot Dimensions	104x190x82x180
Garage Stalls	3
School District	181
Taxes	\$3,836
Taxes with Assessments	\$3,836
Tax Year	2024

Additional Features:

Basement: Crawl Space **Fuel:** Natural Gas **Garage:** 3 **Heat:** Forced Air **Sewer:** City Sewer/Connected **Water:** City Water/Connected **Air Conditioning:** Central Air

Driving Directions:

From Brainerd, North past Ice Arena on Riverside, turn left on Beaver Dam Rd, turn Right on Northtown Street, turn Right on Wild Ave. to home on Left.



Listed By:
Edina Realty, Inc.

Affinity Real Estate Inc. participates in the Regional Multiple Listing Service of Minnesota, Inc Broker Reciprocity (sm) program, allowing us to display other broker's listings on our website. All properties are subject to prior sale, change or withdrawal.



Call Affinity Real Estate

218-237-3333

info@affinityrealestate.com



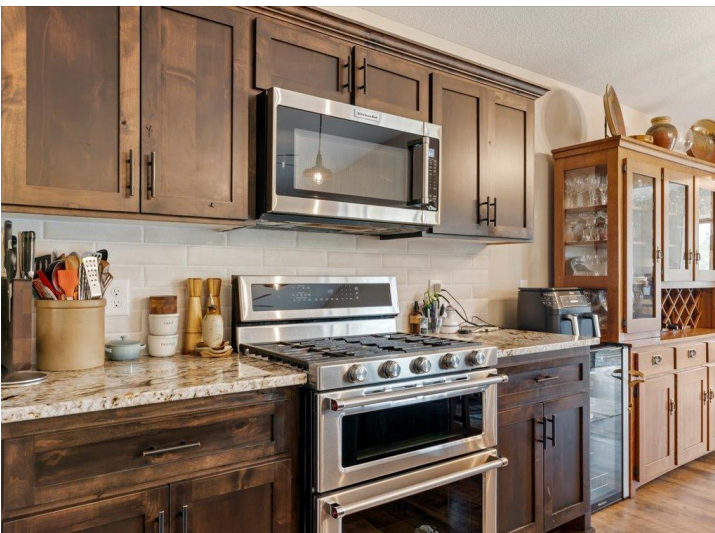
Affinity Real Estate - 600 Park Avenue South - Park Rapids MN 56470



website: www.AffinityRealEstate.com | email: info@affinityrealestate.com | office: 218-237-3333 | fax: 218-237-3377

Affinity
REAL ESTATE INC

\$445,000
MLS 6651562 Residential
15104 Wild Avenue
Brainerd MN 56401



website: www.AffinityRealEstate.com | email: info@affinityrealestate.com | office: 218-237-3333 | fax: 218-237-3377

Affinity
REAL ESTATE INC

\$445,000
MLS 6651562 Residential
15104 Wild Avenue
Brainerd MN 56401



website: www.AffinityRealEstate.com | email: info@affinityrealestate.com | office: 218-237-3333 | fax: 218-237-3377



\$445,000
 MLS 6651562 Residential
 15104 Wild Avenue
 Brainerd MN 56401



website: www.AffinityRealEstate.com | email: info@affinityrealestate.com | office: 218-237-3333 | fax:218-237-3377



\$445,000
MLS 6651562 Residential
15104 Wild Avenue
Brainerd MN 56401