



MLS 6651632 Residential

\$399,900

3,840 sq ft
3 bedrooms
3 baths

15743 County Road 31
Menahga MN 56464

Status: Active

Description:

Nestled on 5 acres, this 3-bedroom, 3-bath home offers a blend of comfort and functionality. The spacious primary suite features a walk-in closet and private bath, while main-floor laundry adds everyday convenience. A standout feature is the 30x40 heated and insulated garage with oversized doors—ideal for storage, hobbies, or a workshop.

The lower level provides incredible versatility with a kitchen, full bath, family room, and three framed rooms that could serve as additional bedrooms, a second living space, or even a home business or daycare.

Outdoor amenities include a large front concrete patio, a back deck, and two fenced-in areas—one for privacy and another for horses—plus an RV hookup. Set up for a small hobby farm, this property is ready for equestrian or homesteading pursuits.

Located near Huntersville State Forest, it offers easy access to hunting, snowmobile trails right from the driveway, and is located RIGHT NEXT to The Menahga Midsummer Fest. With lower-level accommodations already in place, it also presents an excellent VRBO potential.

****Come Visit the Open House 2/1/2025!****

Additional Details:

Year Built	2020
Lot Acres	5
Lot Dimensions	467 x 467
Garage Stalls	4
School District	821
Taxes	\$4,028
Taxes with Assessments	\$4,088
Tax Year	2024

Additional Features:

Broker Reciprocity

 Coldwell Banker Realty

 Fuel: Propane

 Garage: 30x40 Heated, Insulated

 Air: Central Air

 Sewer: Mound Septic, Private Sewer, Septic

Driving Directions: Take Hwy 71 into Menahga. Go East on County 31/3rd St E. Follow



Call Affinity Real Estate

218-237-3333

info@affinityrealestate.com

Affinity Real Estate - 600 Park Avenue South - Park Rapids MN 56470



website: www.AffinityRealEstate.com | email: info@affinityrealestate.com | office: 218-237-3333 | fax:218-237-3377

Affinity
REAL ESTATE INC

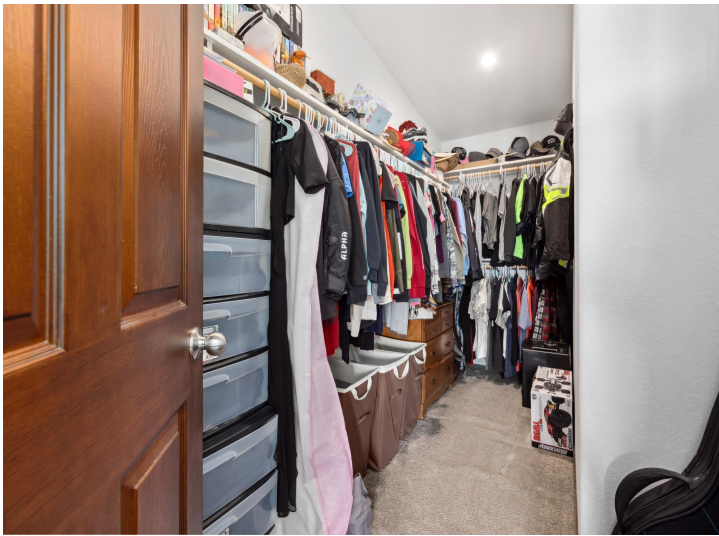
\$399,900
MLS 6651632 Residential
15743 County Road 31
Menahga MN 56464



website: www.AffinityRealEstate.com | email: info@affinityrealestate.com | office: 218-237-3333 | fax: 218-237-3377

Affinity
REAL ESTATE INC

\$399,900
MLS 6651632 Residential
15743 County Road 31
Menahga MN 56464



website: www.AffinityRealEstate.com | email: info@affinityrealestate.com | office: 218-237-3333 | fax: 218-237-3377

Affinity
REAL ESTATE INC

\$399,900
MLS 6651632 Residential
15743 County Road 31
Menahga MN 56464



website: www.AffinityRealEstate.com | email: info@affinityrealestate.com | office: 218-237-3333 | fax:218-237-3377



\$399,900
MLS 6651632 Residential
15743 County Road 31
Menahga MN 56464



website: www.AffinityRealEstate.com | email: info@affinityrealestate.com | office: 218-237-3333 | fax: 218-237-3377

Affinity
REAL ESTATE INC

\$399,900
MLS 6651632 Residential
15743 County Road 31
Menahga MN 56464



website: www.AffinityRealEstate.com | email: info@affinityrealestate.com | office: 218-237-3333 | fax:218-237-3377

Affinity
REAL ESTATE INC

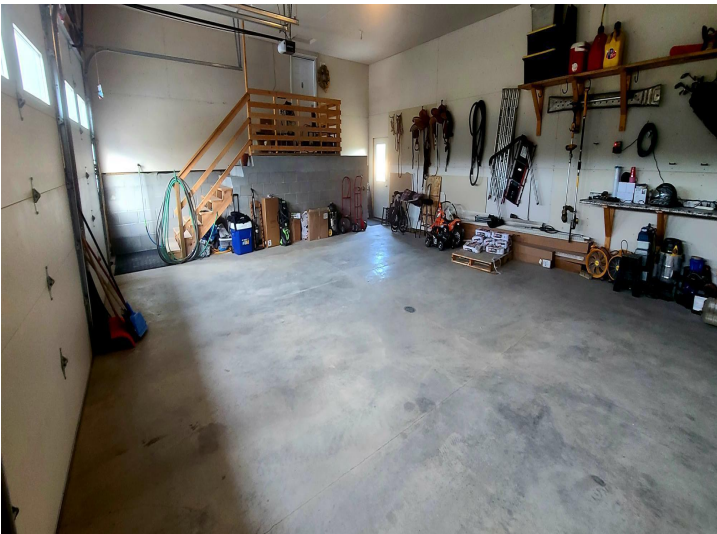
\$399,900
MLS 6651632 Residential
15743 County Road 31
Menahga MN 56464



website: www.AffinityRealEstate.com | email: info@affinityrealestate.com | office: 218-237-3333 | fax:218-237-3377

Affinity
REAL ESTATE INC

\$399,900
MLS 6651632 Residential
15743 County Road 31
Menahga MN 56464



website: www.AffinityRealEstate.com | email: info@affinityrealestate.com | office: 218-237-3333 | fax:218-237-3377



\$399,900
MLS 6651632 Residential
15743 County Road 31
Menahga MN 56464