



MLS 6652155 Land

\$35,000

0.21 Acres
Subdivided

26799 Lidstrom Road
Detroit Lakes MN 56501

Status: Active

Description:

Want a perfect location to keep your boat, water toys, ATVs, or seasonal items? Maybe you're looking for your own man cave or she shed? This Floyd Lake Toy Box Addition has open lots that are waiting for you to build your personally designed shed. Each lot has access to Water and Electricity. Conveniently, they are located in the Floyd Lake area. Call today for more details!

Additional Details:

Lot Acres	0.21
Lot Dimensions	70*120
School District	22
Taxes	\$200
Taxes with Assessments	\$200
Tax Year	2024

Additional Features:

Driving Directions:

From DL take 21 north 2 miles. Take a left on Lidstrom Rd and the property will be on the south side of road about 1/4 mile up. Lot 23



Listed By:
HomeSmart Adventure Realty

Affinity Real Estate Inc. participates in the Regional Multiple Listing Service of Minnesota, Inc Broker Reciprocity (sm) program, allowing us to display other broker's listings on our website. All properties are subject to prior sale, change or withdrawal.



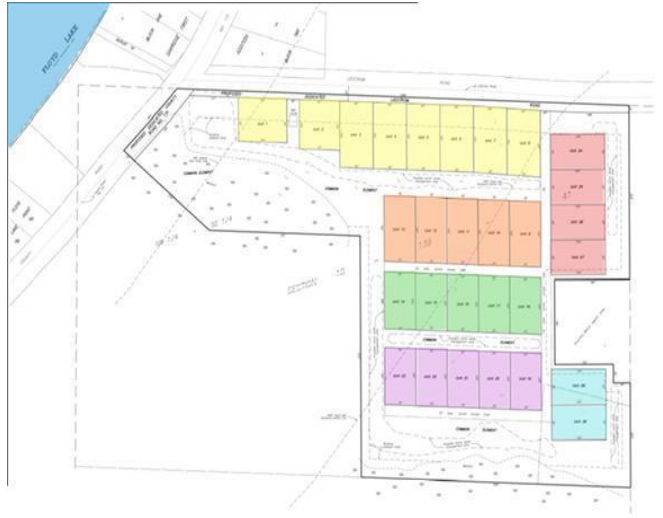
Call Affinity Real Estate

218-237-3333

info@affinityrealestate.com



Affinity Real Estate - 600 Park Avenue South - Park Rapids MN 56470



website: www.AffinityRealEstate.com | email: info@affinityrealestate.com | office: 218-237-3333 | fax:218-237-3377



\$35,000
MLS 6652155 Land
26799 Lidstrom Road
Detroit Lakes MN 56501