



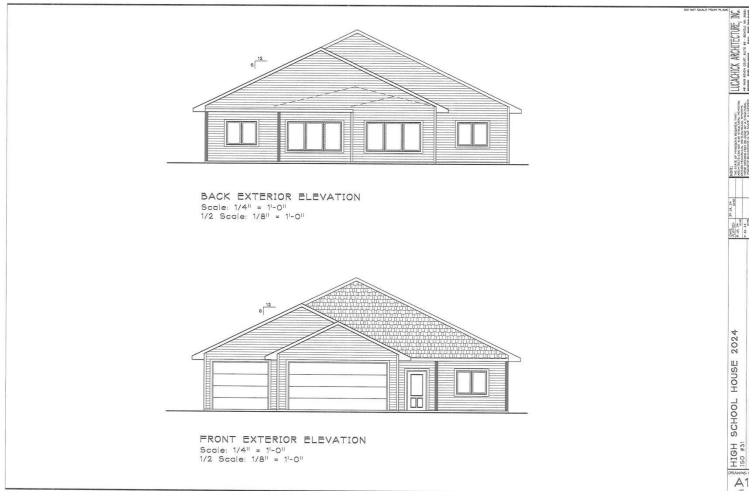
MLS 6652239 Residential

\$359,900

1,834 sq ft
4 bedrooms
2 baths

5924 Annalee Lane
Bemidji MN 56601

Status: Active



Description:

Bemidji High School's construction classes are building an impressive home just minutes from schools, the mall, and downtown Bemidji. This home features a vaulted ceiling in the living room and kitchen, with cabinets, countertops, and flooring from a local vendor. It has covered front and back porches. The kitchen includes a center island and a walk-in pantry. The layout features a primary ensuite, three additional bedrooms, a main bathroom, a laundry/mudroom, and a three-stall garage. For warmth, the home has gas in-floor heating, a gas forced air furnace, and air conditioner for cooling. House boasts Marvin windows. Income guidelines apply, and the home is set to be completed by June 6, 2025.

Additional Details:

Year Built	2025
Lot Acres	1.04
Lot Dimensions	151 x 450 x 151 x 450
Garage Stalls	3
School District	31
Taxes	(unreported)
Taxes with Assessments	(unreported)
Tax Year	2025

Additional Features:

Basement: Slab **Fuel:** Propane **Garage:** 3 **Heat:** Forced Air, Radiant Floor **Sewer:** Septic System Compliant - Yes, Tank with Drainage Field **Water:** Submersible - 4 Inch, Drilled, Private **Air Conditioning:** Central Air

Driving Directions:

West on Division street, past Gene Dillon elementary, turn N. on Archery Rd, R. on Mid-Valley Lane, R. on Annalee Lane. House will be on the right.



Listed By:
Lake-N-Woods Realty

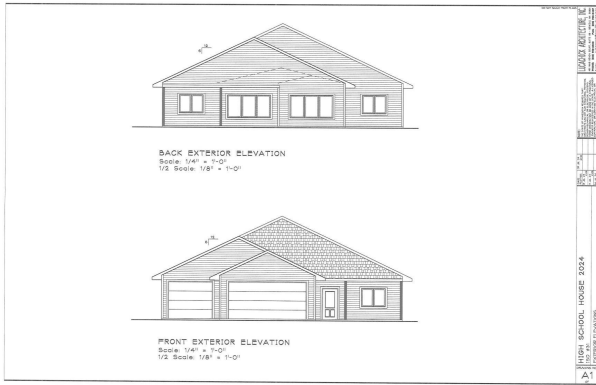
Affinity Real Estate Inc. participates in the Regional Multiple Listing Service of Minnesota, Inc Broker Reciprocity (sm) program, allowing us to display other broker's listings on our website. All properties are subject to prior sale, change or withdrawal.



Call Affinity Real Estate
218-237-3333
info@affinityrealestate.com



Affinity Real Estate - 600 Park Avenue South - Park Rapids MN 56470



website: www.AffinityRealEstate.com | email: info@affinityrealestate.com | office: 218-237-3333 | fax: 218-237-3377

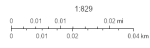


\$359,900
 MLS 6652239 Residential
 5924 Annalee Lane
 Bemidji MN 56601

150098000 5924 ANNALEE LN, BEMIDJI, MN, 56601

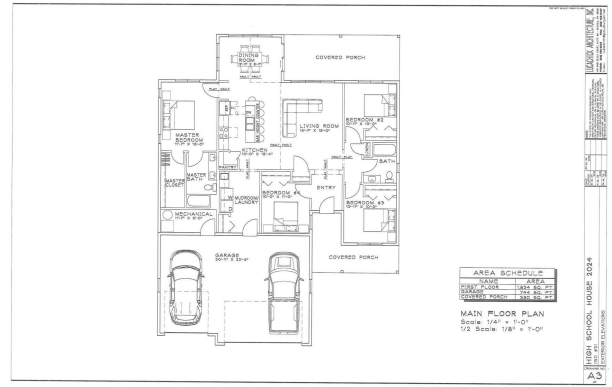


January 22, 2025



Bemidji County

Soil County Property Information



website: www.AffinityRealEstate.com | email: info@affinityrealestate.com | office: 218-237-3333 | fax:218-237-3377



\$359,900
MLS 6652239 Residential
5924 Annalee Lane
Bemidji MN 56601