



MLS 6652538 Commercial

\$275,000

21 Washington Street
Brainerd MN 56401

Status: Pending

Description:

Discover a prime opportunity to own or lease space in a nearly turn-key office building situated along the busy Washington Street corridor in Brainerd. This high-traffic corner location offers excellent access and outstanding visibility for your business. Don't miss your chance to secure space in this versatile split-level office building. Whether you need one level or the entire building, this property is ready to meet your needs. Act today to make it yours!

Additional Details:

Year Built	1986
Lot Acres	0.21
Lot Dimensions	100' x 90'
School District	181
Taxes	\$3,710
Taxes with Assessments	\$3,710
Tax Year	2024

Additional Features:

Fuel: Natural Gas **Heat:** Forced Air

Driving Directions:

From Hwy 210 (Washington Street) / Hwy 371 (S 6th Street) intersection in Brainerd - West on Washington Street 5 blocks - Property is the NW corner of Washington Street and 1st Street N



Listed By:
Close-Converse Commercial Prop

Affinity Real Estate Inc. participates in the Regional Multiple Listing Service of Minnesota, Inc Broker Reciprocity (sm) program, allowing us to display other broker's listings on our website. All properties are subject to prior sale, change or withdrawal.



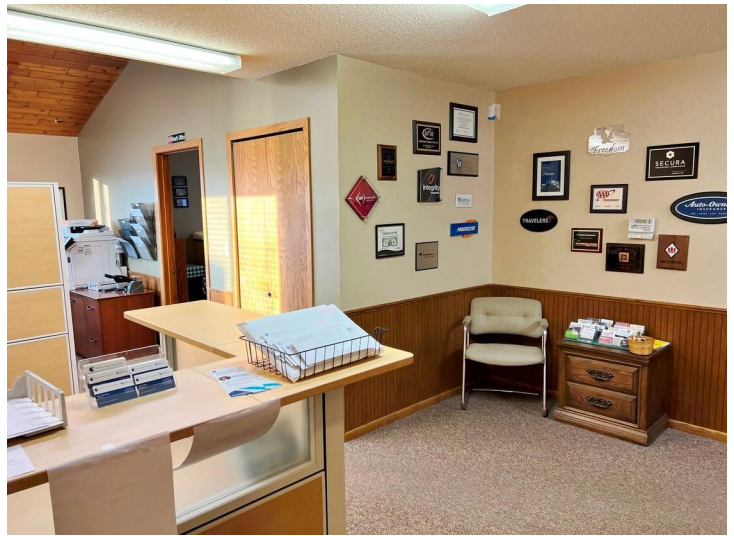
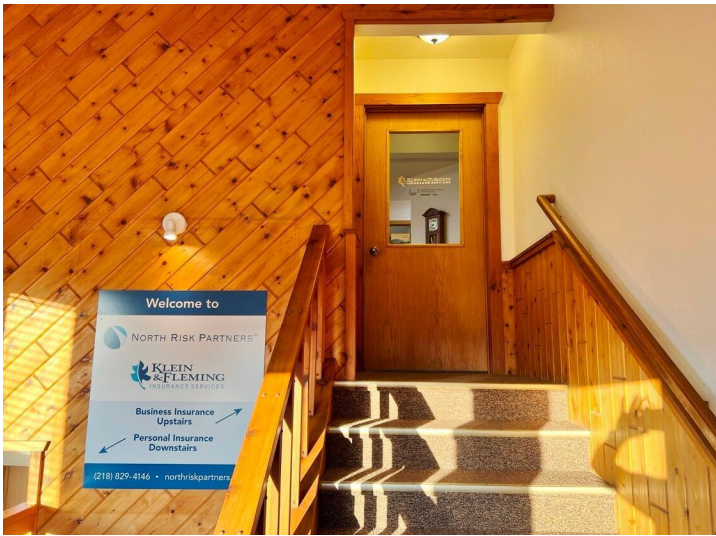
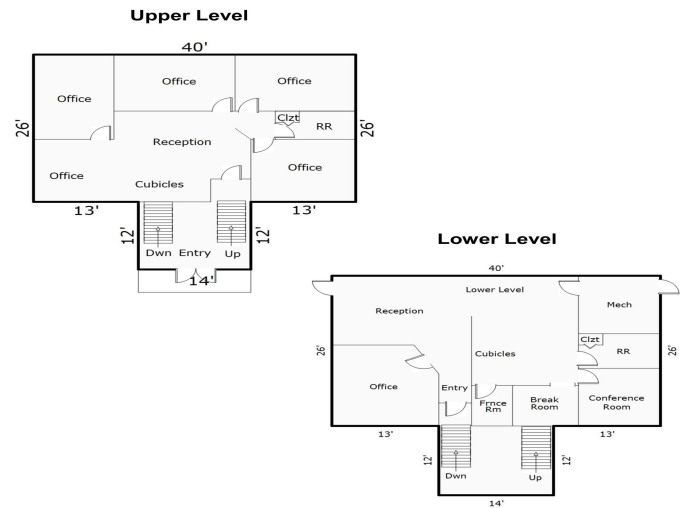
Call Affinity Real Estate

218-237-3333

info@affinityrealestate.com



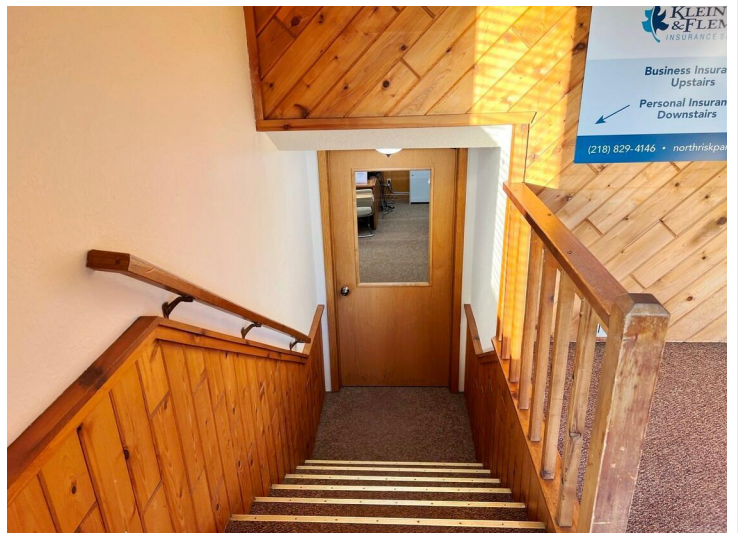
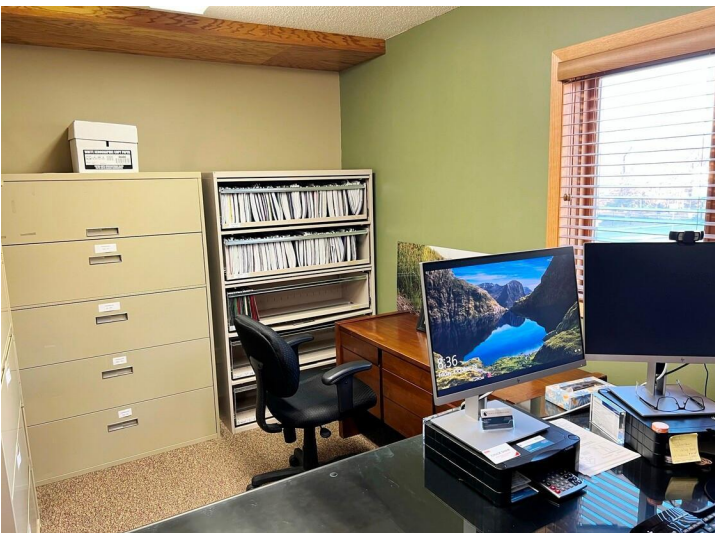
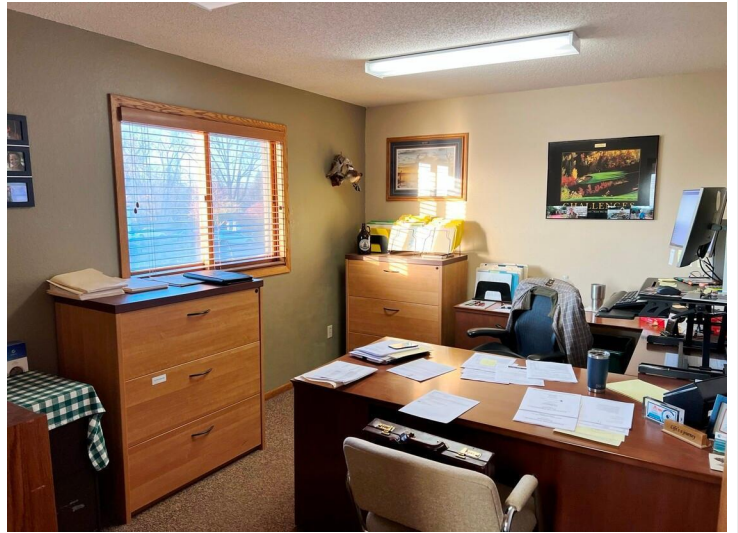
Affinity Real Estate - 600 Park Avenue South - Park Rapids MN 56470



website: www.AffinityRealEstate.com | email: info@affinityrealestate.com | office: 218-237-3333 | fax: 218-237-3377

Affinity
REAL ESTATE INC

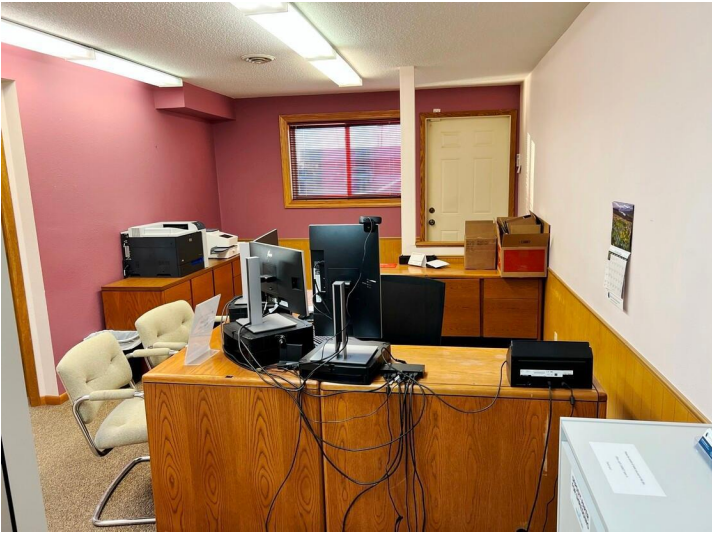
\$275,000
MLS 6652538 Commercial
21 Washington Street
Brainerd MN 56401



website: www.AffinityRealEstate.com | email: info@affinityrealestate.com | office: 218-237-3333 | fax: 218-237-3377

Affinity
REAL ESTATE INC

\$275,000
MLS 6652538 Commercial
21 Washington Street
Brainerd MN 56401



website: www.AffinityRealEstate.com | email: info@affinityrealestate.com | office: 218-237-3333 | fax: 218-237-3377

Affinity
REAL ESTATE INC

\$275,000
MLS 6652538 Commercial
21 Washington Street
Brainerd MN 56401