



MLS 6653408 Lake Land

**\$120,000**

**Description:**

This piece of northern Minnesota land offers a range of possibilities for outdoor enthusiasts and those seeking a peaceful retreat. Situated on just over 5 acres with 200 feet of frontage on Height of Land Lake in Becker County, it's conveniently located just minutes from Detroit Lakes and Park Rapids. The property is a natural crossing point for deer and bear, making it ideal for hunting. In the fall, the waterfowl hunting is spectacular. Being on the border of the Tamarack Wildlife Refuge ensures privacy and a connection to nature. Whether you want to build your dream getaway on the level building site, hunt, relax, or dream, this slice of heaven could be yours!

**Additional Details:**

Lot Acres	5.02
Lot Dimensions	172x1032
School District	23
Taxes	\$92
Taxes with Assessments	\$92
Tax Year	2023

**Additional Features:**

**Driving Directions:**

From HWY 29 take Hubble Pond Rd to the north side of HOL Lake, Property is on the right marked with signs



Listed By:  
HomeSmart Adventure Realty

Affinity Real Estate Inc. participates in the Regional Multiple Listing Service of Minnesota, Inc Broker Reciprocity (sm) program, allowing us to display other broker's listings on our website. All properties are subject to prior sale, change or withdrawal.



**Call Affinity Real Estate**

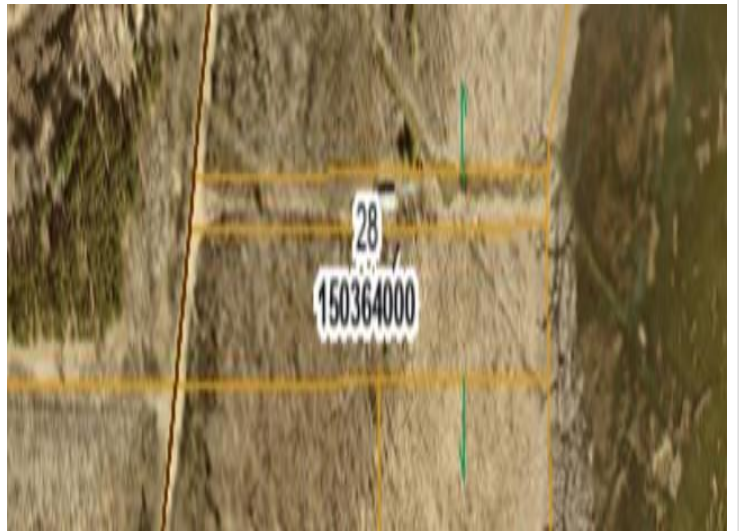
**218-237-3333**

**info@affinityrealestate.com**



**Affinity Real Estate - 600 Park Avenue South - Park Rapids MN 56470**





website: [www.AffinityRealEstate.com](http://www.AffinityRealEstate.com) | email: [info@affinityrealestate.com](mailto:info@affinityrealestate.com) | office: 218-237-3333 | fax: 218-237-3377



**\$120,000**  
MLS 6653408 Lake Land  
37551 County Road 126  
Rochert MN 56578





website: [www.AffinityRealEstate.com](http://www.AffinityRealEstate.com) | email: [info@affinityrealestate.com](mailto:info@affinityrealestate.com) | office: 218-237-3333 | fax: 218-237-3377



**\$120,000**

MLS 6653408 Lake Land  
37551 County Road 126  
Rochert MN 56578