



MLS 6653677 Residential

**\$269,900**

3,448 sq ft  
4 bedrooms  
3 baths

208 25th Street  
Bemidji MN 56601

Status: Active

**Description:**

This completely refreshed 4+ bedroom and 3 full bathroom is ready for you to move into. With updated solid surface countertops, newer appliances, fresh paint and carpet there is nothing for you to do. In the event you need main floor laundry, there are hook ups in place as well. Starting with the main floor you will find an open kitchen, ample storage, dining room and living room and right off of there are 2 main floor bedrooms and 1 full bathroom. Upstairs will greet you with 2 more large bedrooms, full bath and more storage. The majority of the basement is finished and boasts great finishes, full bath, and another bedroom with egress. Find yourself enjoying the spring, summer and fall on the private patio in the fenced in backyard with an additional storage shed. All of this is wrapped into a central location close to BSU, downtown, shopping, and lakes galore

**Additional Details:**

Year Built	1976
Lot Acres	0.28
Lot Dimensions	80x140
Garage Stalls	2
School District	31
Taxes	\$2,494
Taxes with Assessments	\$2,494
Tax Year	2024

**Additional Features:**

**Basement:** Daylight/Lookout Windows, Egress Window(s), Finished, Storage Space **Fuel:** Electric, Natural Gas **Garage:** 2 **Heat:** Forced Air, Heat Pump **Sewer:** City Sewer/Connected **Water:** City Water/Connected **Air Conditioning:** Central Air, Heat Pump

**Driving Directions:**

Irvine Ave To 25th ST home is on right



Listed By:  
218 Real Estate

Affinity Real Estate Inc. participates in the Regional Multiple Listing Service of Minnesota, Inc Broker Reciprocity (sm) program, allowing us to display other broker's listings on our website. All properties are subject to prior sale, change or withdrawal.



Call Affinity Real Estate

**218-237-3333**

[info@affinityrealestate.com](mailto:info@affinityrealestate.com)



Affinity Real Estate - 600 Park Avenue South - Park Rapids MN 56470





website: [www.AffinityRealEstate.com](http://www.AffinityRealEstate.com) | email: [info@affinityrealestate.com](mailto:info@affinityrealestate.com) | office: 218-237-3333 | fax:218-237-3377



**\$269,900**  
MLS 6653677 Residential  
208 25th Street  
Bemidji MN 56601



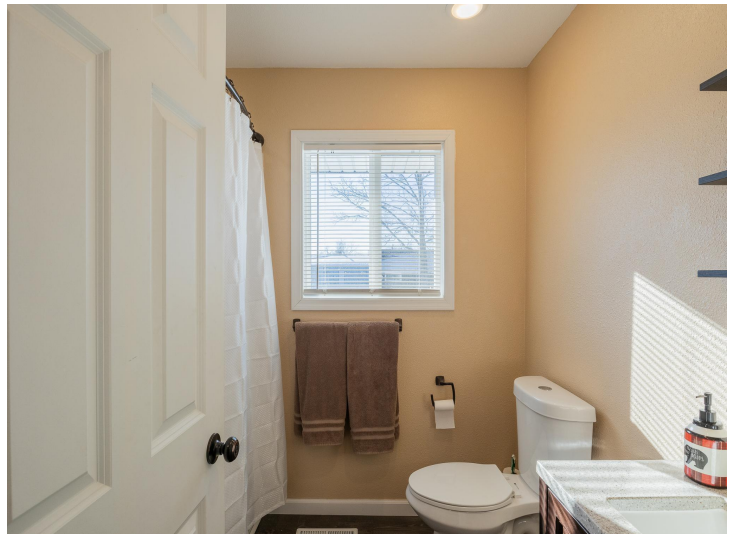


website: [www.AffinityRealEstate.com](http://www.AffinityRealEstate.com) | email: [info@affinityrealestate.com](mailto:info@affinityrealestate.com) | office: 218-237-3333 | fax: 218-237-3377

**Affinity**  
REAL ESTATE INC

**\$269,900**  
MLS 6653677 Residential  
208 25th Street  
Bemidji MN 56601





website: [www.AffinityRealEstate.com](http://www.AffinityRealEstate.com) | email: [info@affinityrealestate.com](mailto:info@affinityrealestate.com) | office: 218-237-3333 | fax:218-237-3377



**\$269,900**  
MLS 6653677 Residential  
208 25th Street  
Bemidji MN 56601





website: [www.AffinityRealEstate.com](http://www.AffinityRealEstate.com) | email: [info@affinityrealestate.com](mailto:info@affinityrealestate.com) | office: 218-237-3333 | fax: 218-237-3377

**Affinity**  
REAL ESTATE INC

**\$269,900**  
MLS 6653677 Residential  
208 25th Street  
Bemidji MN 56601





website: [www.AffinityRealEstate.com](http://www.AffinityRealEstate.com) | email: [info@affinityrealestate.com](mailto:info@affinityrealestate.com) | office: 218-237-3333 | fax:218-237-3377

**Affinity**  
REAL ESTATE INC

**\$269,900**  
MLS 6653677 Residential  
208 25th Street  
Bemidji MN 56601





website: [www.AffinityRealEstate.com](http://www.AffinityRealEstate.com) | email: [info@affinityrealestate.com](mailto:info@affinityrealestate.com) | office: 218-237-3333 | fax:218-237-3377

**Affinity**  
REAL ESTATE INC

**\$269,900**  
MLS 6653677 Residential  
208 25th Street  
Bemidji MN 56601





website: [www.AffinityRealEstate.com](http://www.AffinityRealEstate.com) | email: [info@affinityrealestate.com](mailto:info@affinityrealestate.com) | office: 218-237-3333 | fax:218-237-3377



**\$269,900**  
MLS 6653677 Residential  
208 25th Street  
Bemidji MN 56601





website: [www.AffinityRealEstate.com](http://www.AffinityRealEstate.com) | email: [info@affinityrealestate.com](mailto:info@affinityrealestate.com) | office: 218-237-3333 | fax:218-237-3377



**\$269,900**  
MLS 6653677 Residential  
208 25th Street  
Bemidji MN 56601