



MLS 6653848 Lake Home

**\$539,900**

2,880 sq ft  
4 bedrooms  
3 baths

32915 Dahlberg Lake Road  
Shevlin MN 56676

Waterfront: Dahlberg

Status: Active

#### Description:

A TRUE NORTHWOODS CLASSIC!!! Log home on a lake with acreage!!! 4-bedroom-3 bath "Minnesota Log Home" on very private Dahlberg Lake boasting 20.99 acres of privacy and over 1,800 feet of frontage! Dahlberg is a very scenic private lake with no public access and only two other places on the lake. Moose Creek runs through the lake and offers some great fishing for giant sunfish and crappies, northern, bass, and a few walleye! The home is very inviting with the covered front porch and the numerous windows offering great views of the lake. The open LR-DR-Kitchen further accentuates the large, vaulted ceiling and exposed beams! There is a huge screened-in porch along with a lakeside deck to highlight the lake views. The loft area would make an awesome primary suite with its own 1/2 bath and lots of closet space. The main floor and lower-level bathrooms showcase new tile showers with waterfall shower systems. Spoil yourself with the lower-level hot tub with views of the lake! Other perks of the home include an enormous pantry, several storage closets, hardwood floors in LR, a new propane boiler, a water heater, and a water softener. There's plenty of room for your vehicles and toys with the insulated/heated 28' x 48' garage. A couple of bonus storage sheds and playset make things complete!

#### Additional Details:

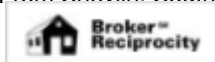
Year Built	1989
Lot Acres	20.99
Lot Dimensions	650x1320
Garage Stalls	4
School District	162
Taxes	\$2,688
Taxes with Assessments	\$2,688
Tax Year	2025

#### Additional Features:

**Basement:** Finished, Full, Walkout, Wood **Fuel:** Electric, Propane **Garage:** 4 **Heat:** Baseboard, Fireplace(s) **Sewer:** Private Sewer, Tank with Drainage Field **Water:** Submersible - 4 Inch, Drilled, Private, Well **Air Conditioning:** Ductless Mini-Split

#### Driving Directions:

From Shevlin. South on County Rd 2 for 3 1/2 miles, right on 330th St. 1/2 mile, right on Dahlberg Lake on right.



Listed By:  
Realty Experts, LLC

Affinity Real Estate Inc. participates in the Regional Multiple Listing Service of Minnesota, Inc Broker Reciprocity (sm) program, allowing us to display other broker's listings on our website. All properties are subject to prior sale, change or withdrawal.



Call Affinity Real Estate

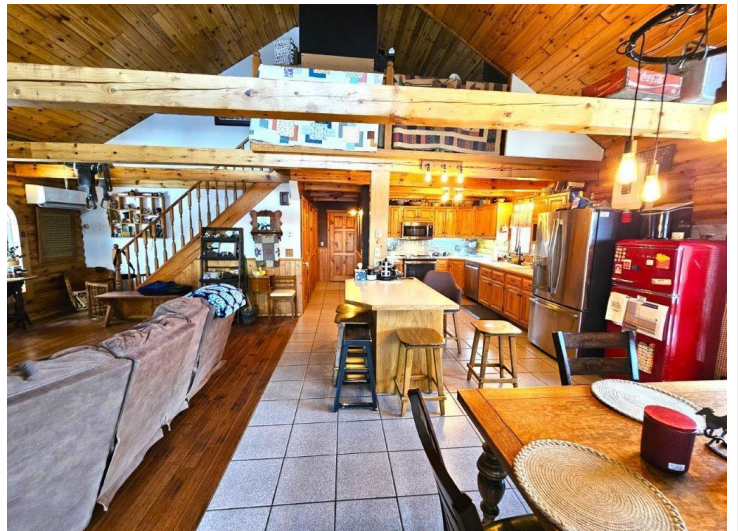
**218-237-3333**

[info@affinityrealestate.com](mailto:info@affinityrealestate.com)



Affinity Real Estate - 600 Park Avenue South - Park Rapids MN 56470





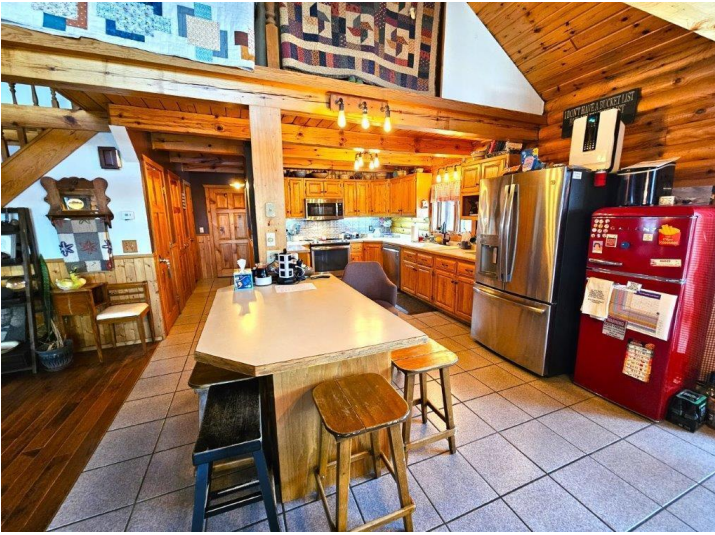
website: [www.AffinityRealEstate.com](http://www.AffinityRealEstate.com) | email: [info@affinityrealestate.com](mailto:info@affinityrealestate.com) | office: 218-237-3333 | fax: 218-237-3377

**Affinity**  
REAL ESTATE INC

**\$539,900**

MLS 6653848 Lake Home  
32915 Dahlberg Lake Road  
Shevlin MN 56676





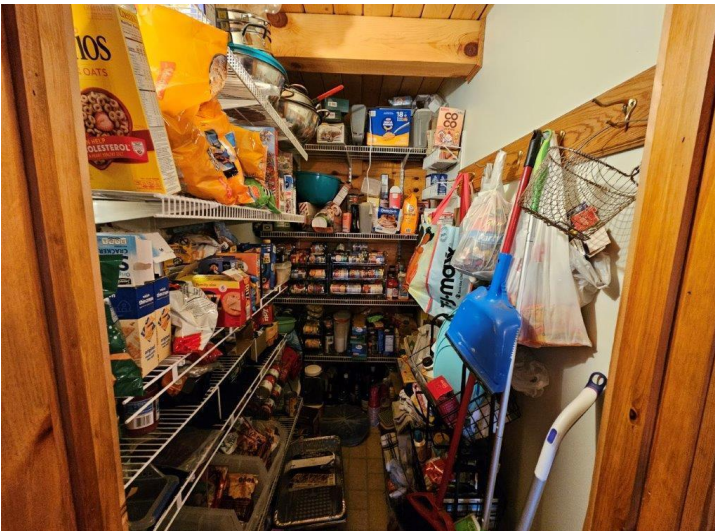
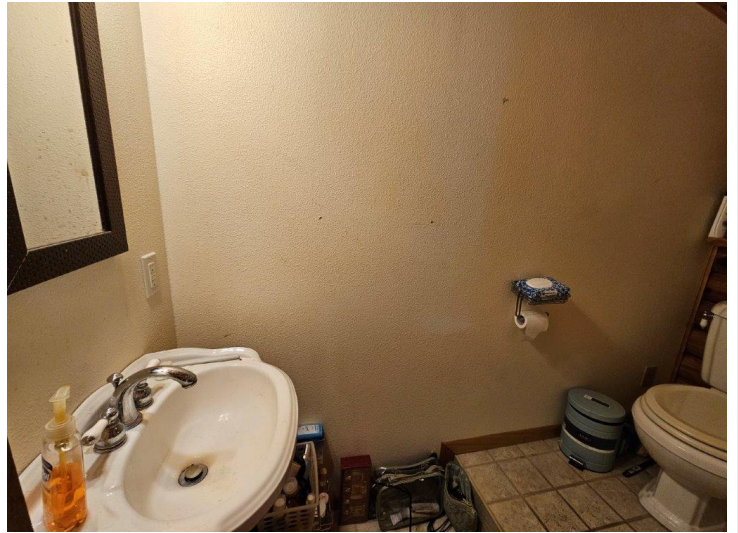
website: [www.AffinityRealEstate.com](http://www.AffinityRealEstate.com) | email: [info@affinityrealestate.com](mailto:info@affinityrealestate.com) | office: 218-237-3333 | fax: 218-237-3377

**Affinity**  
REAL ESTATE INC

**\$539,900**

MLS 6653848 Lake Home  
32915 Dahlberg Lake Road  
Shevlin MN 56676



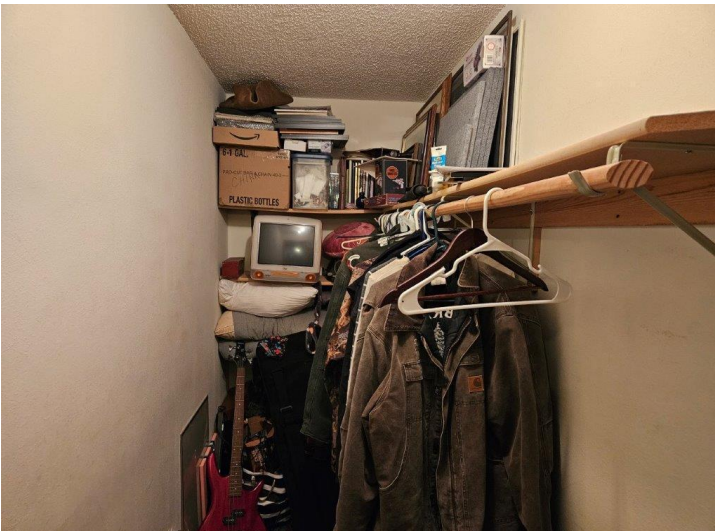


website: [www.AffinityRealEstate.com](http://www.AffinityRealEstate.com) | email: [info@affinityrealestate.com](mailto:info@affinityrealestate.com) | office: 218-237-3333 | fax: 218-237-3377

**Affinity**  
REAL ESTATE INC

**\$539,900**  
MLS 6653848 Lake Home  
32915 Dahlberg Lake Road  
Shevlin MN 56676



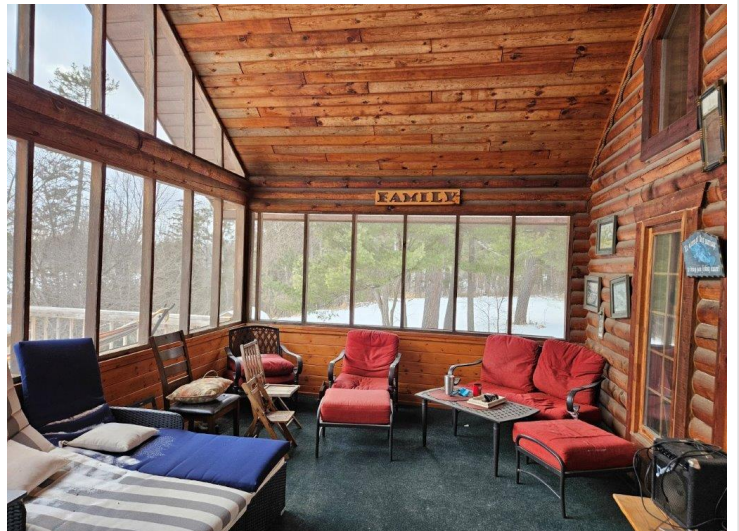
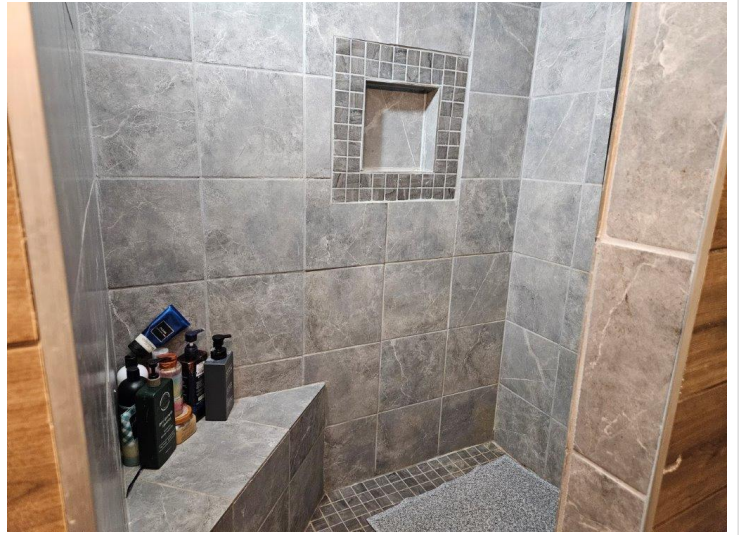
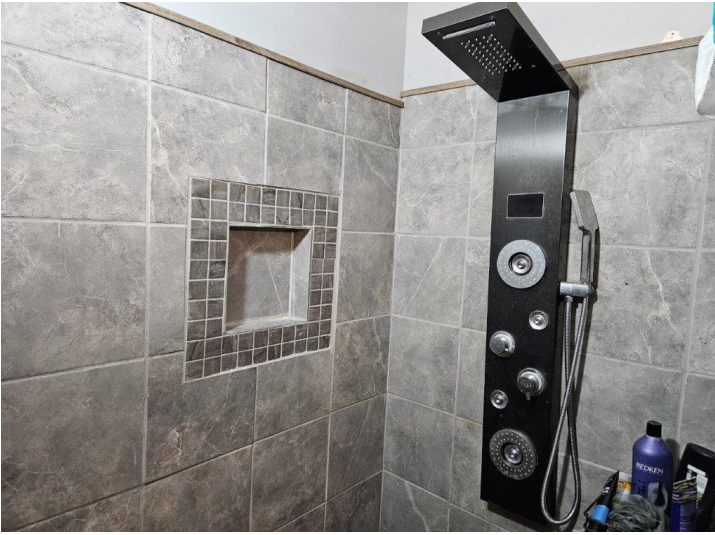


website: [www.AffinityRealEstate.com](http://www.AffinityRealEstate.com) | email: [info@affinityrealestate.com](mailto:info@affinityrealestate.com) | office: 218-237-3333 | fax: 218-237-3377



**\$539,900**  
 MLS 6653848 Lake Home  
 32915 Dahlberg Lake Road  
 Shevlin MN 56676





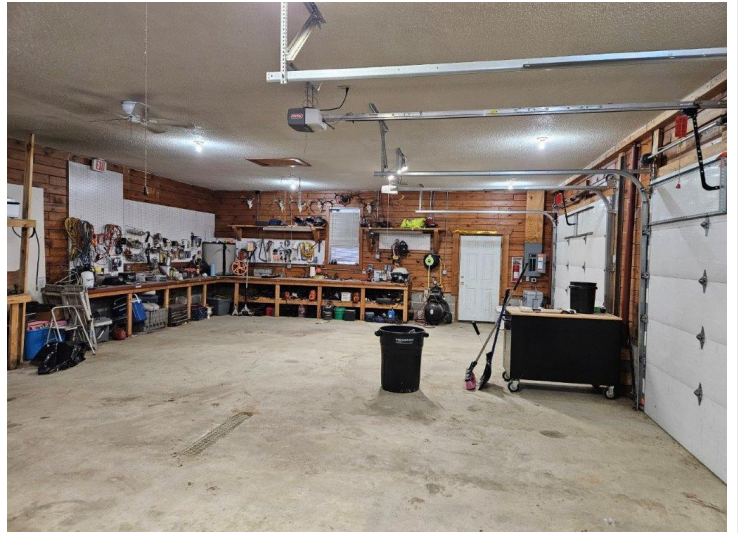
website: [www.AffinityRealEstate.com](http://www.AffinityRealEstate.com) | email: [info@affinityrealestate.com](mailto:info@affinityrealestate.com) | office: 218-237-3333 | fax: 218-237-3377



**\$539,900**

MLS 6653848 Lake Home  
32915 Dahlberg Lake Road  
Shevlin MN 56676





website: [www.AffinityRealEstate.com](http://www.AffinityRealEstate.com) | email: [info@affinityrealestate.com](mailto:info@affinityrealestate.com) | office: 218-237-3333 | fax: 218-237-3377



**\$539,900**  
 MLS 6653848 Lake Home  
 32915 Dahlberg Lake Road  
 Shevlin MN 56676





website: [www.AffinityRealEstate.com](http://www.AffinityRealEstate.com) | email: [info@affinityrealestate.com](mailto:info@affinityrealestate.com) | office: 218-237-3333 | fax: 218-237-3377



**\$539,900**  
 MLS 6653848 Lake Home  
 32915 Dahlberg Lake Road  
 Shevlin MN 56676





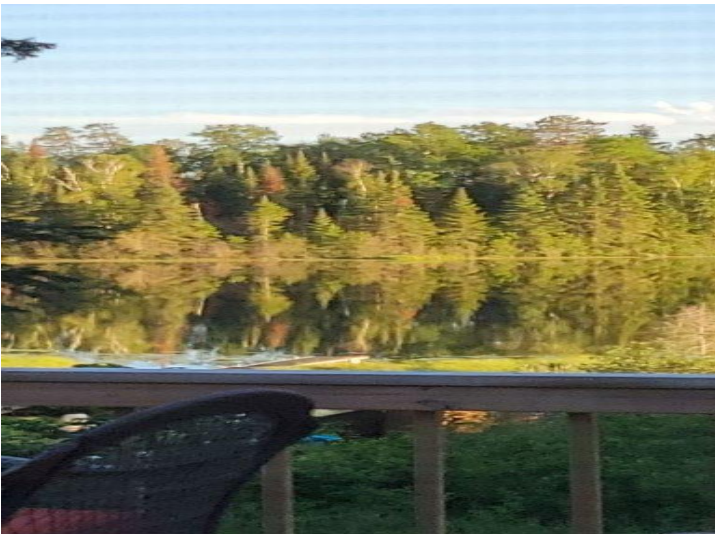
website: [www.AffinityRealEstate.com](http://www.AffinityRealEstate.com) | email: [info@affinityrealestate.com](mailto:info@affinityrealestate.com) | office: 218-237-3333 | fax: 218-237-3377

**Affinity**  
REAL ESTATE INC

**\$539,900**

MLS 6653848 Lake Home  
32915 Dahlberg Lake Road  
Shevlin MN 56676





website: [www.AffinityRealEstate.com](http://www.AffinityRealEstate.com) | email: [info@affinityrealestate.com](mailto:info@affinityrealestate.com) | office: 218-237-3333 | fax: 218-237-3377



**\$539,900**

MLS 6653848 Lake Home  
32915 Dahlberg Lake Road  
Shevlin MN 56676