



MLS 6653898 Residential

**\$539,000**

2,648 sq ft  
4 bedrooms  
3 baths

12483 135th Avenue  
Menahga MN 56464

Status: Active

**Description:**

Nestled in the heart of nature, this stunning 4 bedrooms, 3 bath country home, situated on 11.53 acres is a true haven for those seeking peace, privacy, and the best of country living. Located just a short drive from Park Rapids, this property is perfect for the outdoor enthusiast, wildlife lovers, and those looking for a spacious updated home with plenty of room to roam. The meticulous yard has been recently extensively landscaped, with a large fire pit area, concrete in front of garage, shop, and sidewalk to shop. The 36 x 58 heated shop is great for any hobbyist or professional looking for space to work. Enjoy abundant wildlife sightings including deer, bear, wolves, and bobcats. Schedule a tour today and see all the incredible features this home has to offer!!!

**Additional Details:**

Year Built	2003
Lot Acres	11.53
Lot Dimensions	380x1320
Garage Stalls	2
School District	309
Taxes	\$2,752
Taxes with Assessments	\$2,962
Tax Year	2025

**Additional Features:**

**Fuel:** Electric, Propane **Heat:** Dual, Forced Air, Radiant Floor

**Driving Directions:**

From HWY 71/34 in Park Rapids: Go South on 71 6.5 miles to 120th Street and take a right. Proceed 1/8 of a mile to 135th Ave, right for 1/2 mile to property left & #12483



Listed By:  
Coldwell Banker Crown Realtors

Affinity Real Estate Inc. participates in the Regional Multiple Listing Service of Minnesota, Inc Broker Reciprocity (sm) program, allowing us to display other broker's listings on our website. All properties are subject to prior sale, change or withdrawal.



**Call Affinity Real Estate**

**218-237-3333**

**info@affinityrealestate.com**



**Affinity Real Estate - 600 Park Avenue South - Park Rapids MN 56470**



website: [www.AffinityRealEstate.com](http://www.AffinityRealEstate.com) | email: [info@affinityrealestate.com](mailto:info@affinityrealestate.com) | office: 218-237-3333 | fax:218-237-3377



**\$539,000**  
MLS 6653898 Residential  
12483 135th Avenue  
Menahga MN 56464



website: [www.AffinityRealEstate.com](http://www.AffinityRealEstate.com) | email: [info@affinityrealestate.com](mailto:info@affinityrealestate.com) | office: 218-237-3333 | fax:218-237-3377



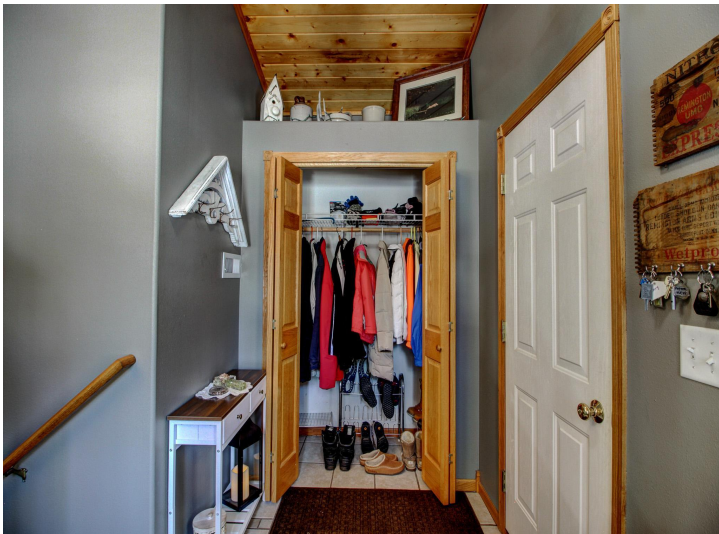
**\$539,000**  
MLS 6653898 Residential  
12483 135th Avenue  
Menahga MN 56464



website: [www.AffinityRealEstate.com](http://www.AffinityRealEstate.com) | email: [info@affinityrealestate.com](mailto:info@affinityrealestate.com) | office: 218-237-3333 | fax:218-237-3377



**\$539,000**  
MLS 6653898 Residential  
12483 135th Avenue  
Menahga MN 56464



website: [www.AffinityRealEstate.com](http://www.AffinityRealEstate.com) | email: [info@affinityrealestate.com](mailto:info@affinityrealestate.com) | office: 218-237-3333 | fax: 218-237-3377

**Affinity**  
REAL ESTATE INC

**\$539,000**  
MLS 6653898 Residential  
12483 135th Avenue  
Menahga MN 56464



website: [www.AffinityRealEstate.com](http://www.AffinityRealEstate.com) | email: [info@affinityrealestate.com](mailto:info@affinityrealestate.com) | office: 218-237-3333 | fax:218-237-3377

**Affinity**  
REAL ESTATE INC

**\$539,000**  
MLS 6653898 Residential  
12483 135th Avenue  
Menahga MN 56464



website: [www.AffinityRealEstate.com](http://www.AffinityRealEstate.com) | email: [info@affinityrealestate.com](mailto:info@affinityrealestate.com) | office: 218-237-3333 | fax:218-237-3377

**Affinity**  
REAL ESTATE INC

**\$539,000**  
MLS 6653898 Residential  
12483 135th Avenue  
Menahga MN 56464



website: [www.AffinityRealEstate.com](http://www.AffinityRealEstate.com) | email: [info@affinityrealestate.com](mailto:info@affinityrealestate.com) | office: 218-237-3333 | fax:218-237-3377



**\$539,000**  
MLS 6653898 Residential  
12483 135th Avenue  
Menahga MN 56464