



MLS 6653914 Land

\$49,900

7.59 Acres
Raw Land

12213 200th Street
Wadena MN 56482

Status: Pending

Description:

Nestled in the heart of serene countryside, this 7.59-acre parcel offers an incredible opportunity to create your dream retreat. Featuring a picturesque mix of mature and young trees, the land provides natural beauty and privacy while inviting an abundance of wildlife.

Its proximity to a paved road ensures convenient access without compromising the tranquil ambiance of rural living and allows for versatile use, whether you're envisioning a custom home, a weekend getaway, or recreational space. This property is perfect for those seeking to escape the hustle of city life while still enjoying accessibility. With its mix of natural features and potential for development, it's a rare gem waiting for the right owner to unlock its full potential.

Additional Details:

Lot Acres	7.59
Lot Dimensions	Lot Area 330,620
School District	2155
Taxes	\$188
Taxes with Assessments	\$188
Tax Year	2024

Additional Features:

Driving Directions:

Head North on US 71. Turn left onto 200th Street. Property is on the left side.



Listed By:
Centennial Realty

Affinity Real Estate Inc. participates in the Regional Multiple Listing Service of Minnesota, Inc Broker Reciprocity (sm) program, allowing us to display other broker's listings on our website. All properties are subject to prior sale, change or withdrawal.



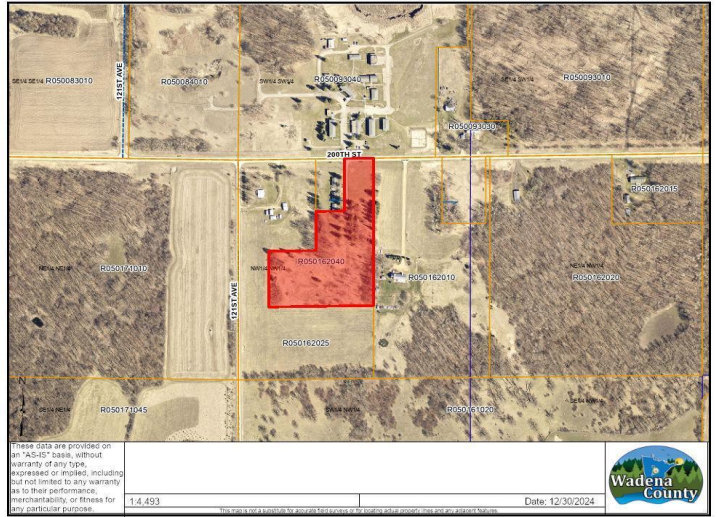
Call Affinity Real Estate

218-237-3333

info@affinityrealestate.com



Affinity Real Estate - 600 Park Avenue South - Park Rapids MN 56470



website: www.AffinityRealEstate.com | email: info@affinityrealestate.com | office: 218-237-3333 | fax: 218-237-3377



\$49,900
 MLS 6653914 Land
 12213 200th Street
 Wadena MN 56482