



MLS 6653949 Lake Home

**\$499,900**

948 sq ft  
3 bedrooms  
2 baths

23960 County 80  
Nevis MN 56467

Waterfront: Belle Taine

Status: Closed

**Description:**

Don't miss out on this unbelievable chance at a classic Lake Belle Taine cabin situated just feet from the water's edge! Stunning lake views from the primary bedroom, kitchen and living and dining rooms. Be on the water in moments on the sunny days and cozy up to the stone fireplace on the rainy ones. Enjoy one of Minnesota's most popular lakes with amazing fishing, boating and swimming opportunities. Also, an amazing location just moments from the popular town of Nevis and all it has to offer. Come and grab your own piece of paradise today!

**Additional Details:**

Year Built	1920
Lot Acres	0.34
Lot Dimensions	81 x 191
Garage Stalls	1
School District	309
Taxes	\$2,244
Taxes with Assessments	\$2,454
Tax Year	2024

**Additional Features:**

**Basement:** Unfinished **Fuel:** Propane **Garage:** 1 **Heat:** Fireplace(s) **Sewer:** Tank with Drainage Field **Water:** Drilled **Air Conditioning:** None

**Driving Directions:**

From Park Rapids go East on State Hwy 34, turn on County Road 80 and proceed to property.



Listed By:  
Affinity Real Estate Inc.

Affinity Real Estate Inc. participates in the Regional Multiple Listing Service of Minnesota, Inc Broker Reciprocity (sm) program, allowing us to display other broker's listings on our website. All properties are subject to prior sale, change or withdrawal.



**Call Affinity Real Estate**

**218-237-3333**

**info@affinityrealestate.com**



**Affinity Real Estate - 600 Park Avenue South - Park Rapids MN 56470**



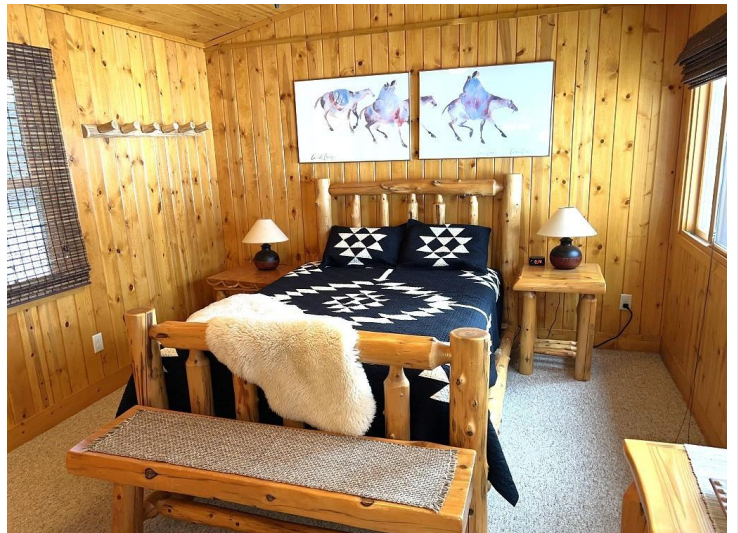
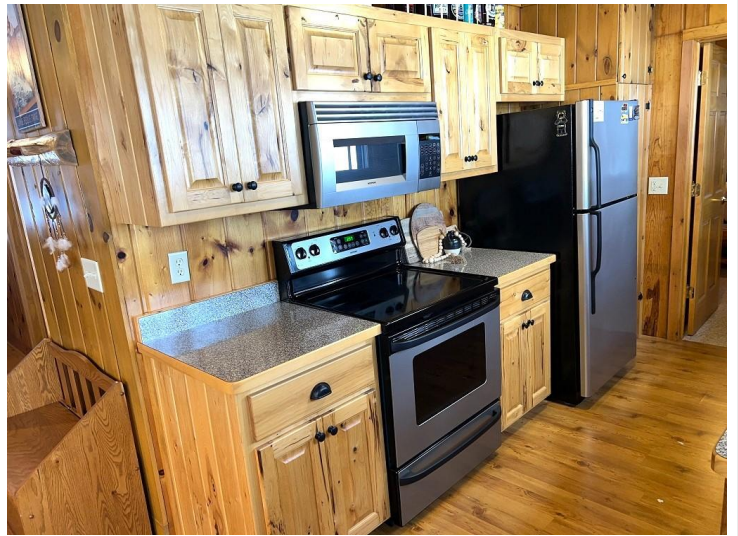


website: [www.AffinityRealEstate.com](http://www.AffinityRealEstate.com) | email: [info@affinityrealestate.com](mailto:info@affinityrealestate.com) | office: 218-237-3333 | fax: 218-237-3377

**Affinity**  
REAL ESTATE INC

**\$499,900**  
MLS 6653949 Lake Home  
23960 County 80  
Nevis MN 56467





website: [www.AffinityRealEstate.com](http://www.AffinityRealEstate.com) | email: [info@affinityrealestate.com](mailto:info@affinityrealestate.com) | office: 218-237-3333 | fax: 218-237-3377

**Affinity**  
REAL ESTATE INC

**\$499,900**  
MLS 6653949 Lake Home  
23960 County 80  
Nevis MN 56467





website: [www.AffinityRealEstate.com](http://www.AffinityRealEstate.com) | email: [info@affinityrealestate.com](mailto:info@affinityrealestate.com) | office: 218-237-3333 | fax: 218-237-3377

**Affinity**  
REAL ESTATE INC

**\$499,900**  
MLS 6653949 Lake Home  
23960 County 80  
Nevis MN 56467





website: [www.AffinityRealEstate.com](http://www.AffinityRealEstate.com) | email: [info@affinityrealestate.com](mailto:info@affinityrealestate.com) | office: 218-237-3333 | fax: 218-237-3377

**Affinity**  
REAL ESTATE INC

**\$499,900**

MLS 6653949 Lake Home  
23960 County 80  
Nevis MN 56467