



MLS 6654231 Lake Home

\$669,500

2,972 sq ft
4 bedrooms
3 baths

11160 Ottertail Point Drive
Cass Lake MN 56633

Waterfront: Leech

Status: Active

Description:

All you need to embrace the beauty of lake living are some groceries and clothes. This stunning lot and home are located on the east side of Ottertail Point. The property and house have been meticulously maintained and cared for. Imagine enjoying your morning coffee or catching walleyes right off the dock while relaxing by the swing and firepit overlooking Portage Bay. Leech Lake provides endless opportunities for fishing, boating adventures, and private sandy beaches, perfect for soaking up the sun on a hot summer day. Additionally, the property includes a storage building for all your water toys that tend to accumulate. This gem will not stay on the market for long! The property comes fully furnished and includes the dock, motorized lift, and a John Deere riding tractor/mower with the sale.

Additional Details:

| | |
|------------------------|----------------------------|
| Year Built | 1998 |
| Lot Acres | 1.13 |
| Lot Dimensions | 455.21x105.69x418.30x144.2 |
| Garage Stalls | 4 |
| School District | 115 |
| Taxes | \$4,658 |
| Taxes with Assessments | \$4,724 |
| Tax Year | 2024 |

Additional Features:

Basement: Block **Fuel:** Propane, Wood **Garage:** 4 **Heat:** Forced Air, Fireplace(s) **Sewer:** Private Sewer, Septic System Compliant - Yes **Water:** Submersible - 4 Inch **Air Conditioning:** Central Air

Driving Directions:

From Highway 2, go south on the Sucker Bay Rd (Ottertail Pt. Rd) 13.1 miles to the property on your left.



Listed By:
Bill Hansen Realty/Walker

Affinity Real Estate Inc. participates in the Regional Multiple Listing Service of Minnesota, Inc Broker Reciprocity (sm) program, allowing us to display other broker's listings on our website. All properties are subject to prior sale, change or withdrawal.



Call Affinity Real Estate

218-237-3333

info@affinityrealestate.com



Affinity Real Estate - 600 Park Avenue South - Park Rapids MN 56470



website: www.AffinityRealEstate.com | email: info@affinityrealestate.com | office: 218-237-3333 | fax:218-237-3377

Affinity
REAL ESTATE INC

\$669,500
MLS 6654231 Lake Home
11160 Ottertail Point Drive
Cass Lake MN 56633



website: www.AffinityRealEstate.com | email: info@affinityrealestate.com | office: 218-237-3333 | fax:218-237-3377



\$669,500
MLS 6654231 Lake Home
11160 Ottertail Point Drive
Cass Lake MN 56633



website: www.AffinityRealEstate.com | email: info@affinityrealestate.com | office: 218-237-3333 | fax: 218-237-3377

Affinity
REAL ESTATE INC

\$669,500
MLS 6654231 Lake Home
11160 Ottertail Point Drive
Cass Lake MN 56633



website: www.AffinityRealEstate.com | email: info@affinityrealestate.com | office: 218-237-3333 | fax:218-237-3377

Affinity
REAL ESTATE INC

\$669,500
MLS 6654231 Lake Home
11160 Ottertail Point Drive
Cass Lake MN 56633



website: www.AffinityRealEstate.com | email: info@affinityrealestate.com | office: 218-237-3333 | fax:218-237-3377



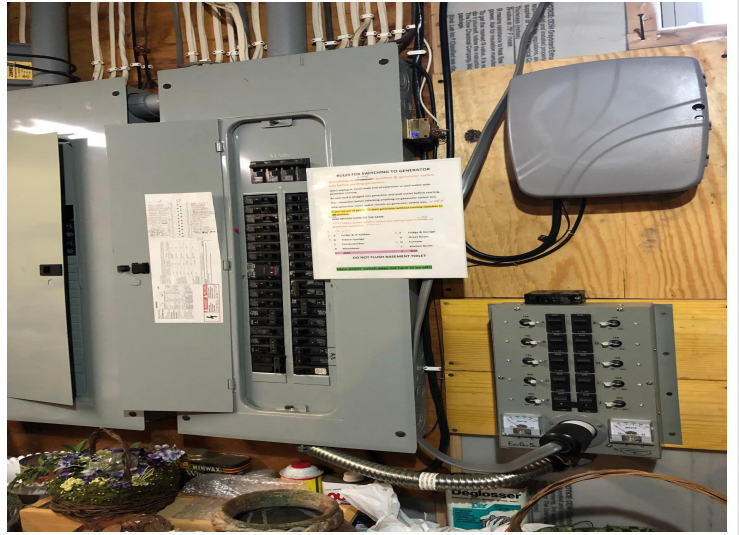
\$669,500
MLS 6654231 Lake Home
11160 Ottertail Point Drive
Cass Lake MN 56633



website: www.AffinityRealEstate.com | email: info@affinityrealestate.com | office: 218-237-3333 | fax:218-237-3377

Affinity
REAL ESTATE INC

\$669,500
MLS 6654231 Lake Home
11160 Ottertail Point Drive
Cass Lake MN 56633



website: www.AffinityRealEstate.com | email: info@affinityrealestate.com | office: 218-237-3333 | fax:218-237-3377



\$669,500
MLS 6654231 Lake Home
11160 Ottertail Point Drive
Cass Lake MN 56633



website: www.AffinityRealEstate.com | email: info@affinityrealestate.com | office: 218-237-3333 | fax:218-237-3377



\$669,500
MLS 6654231 Lake Home
11160 Ottertail Point Drive
Cass Lake MN 56633