



MLS 6654565 Residential

**\$389,000**

2,392 sq ft  
4 bedrooms  
3 baths

3123 Clover Court  
Bemidji MN 56601

Status: Active

**Description:**

This gorgeous 5-year-old home has it all! From its private wooded lot to its open floor plan, it's made to impress. Sellers have upgraded lighting and there is obvious pride of ownership here. Located just minutes from shopping and all that Bemidji has to offer. With its ideal floor plan, large kitchen (and pantry), heated 3 car garage and nearly 2 acres you don't want to miss this one! Book your private showing today!

**Additional Details:**

Year Built	2019
Lot Acres	1.19
Lot Dimensions	155x350
Garage Stalls	3
School District	31
Taxes	\$3,584
Taxes with Assessments	\$3,584
Tax Year	2024

**Additional Features:**

**Basement:** Finished, Full **Fuel:** Natural Gas **Garage:** 3 **Heat:** Forced Air **Sewer:** Private Sewer, Septic System Compliant - Yes **Water:** Private, Well **Air Conditioning:** Central Air

**Driving Directions:**

From Adams Ave going south, left onto Fox Dr to Clover Ct. Left on Clover to the cul de sac.



Listed By:  
Better Homes and Gardens Real Estate First Choice

Affinity Real Estate Inc. participates in the Regional Multiple Listing Service of Minnesota, Inc Broker Reciprocity (sm) program, allowing us to display other broker's listings on our website. All properties are subject to prior sale, change or withdrawal.



Call Affinity Real Estate

**218-237-3333**

[info@affinityrealestate.com](mailto:info@affinityrealestate.com)



Affinity Real Estate - 600 Park Avenue South - Park Rapids MN 56470



website: [www.AffinityRealEstate.com](http://www.AffinityRealEstate.com) | email: [info@affinityrealestate.com](mailto:info@affinityrealestate.com) | office: 218-237-3333 | fax: 218-237-3377

**Affinity**  
REAL ESTATE INC

**\$389,000**  
MLS 6654565 Residential  
3123 Clover Court  
Bemidji MN 56601



website: [www.AffinityRealEstate.com](http://www.AffinityRealEstate.com) | email: [info@affinityrealestate.com](mailto:info@affinityrealestate.com) | office: 218-237-3333 | fax:218-237-3377

**Affinity**  
REAL ESTATE INC

**\$389,000**  
MLS 6654565 Residential  
3123 Clover Court  
Bemidji MN 56601



website: [www.AffinityRealEstate.com](http://www.AffinityRealEstate.com) | email: [info@affinityrealestate.com](mailto:info@affinityrealestate.com) | office: 218-237-3333 | fax: 218-237-3377

**Affinity**  
REAL ESTATE INC

**\$389,000**  
MLS 6654565 Residential  
3123 Clover Court  
Bemidji MN 56601



website: [www.AffinityRealEstate.com](http://www.AffinityRealEstate.com) | email: [info@affinityrealestate.com](mailto:info@affinityrealestate.com) | office: 218-237-3333 | fax:218-237-3377

**Affinity**  
REAL ESTATE INC

**\$389,000**  
MLS 6654565 Residential  
3123 Clover Court  
Bemidji MN 56601



website: [www.AffinityRealEstate.com](http://www.AffinityRealEstate.com) | email: [info@affinityrealestate.com](mailto:info@affinityrealestate.com) | office: 218-237-3333 | fax:218-237-3377



**\$389,000**  
MLS 6654565 Residential  
3123 Clover Court  
Bemidji MN 56601



website: [www.AffinityRealEstate.com](http://www.AffinityRealEstate.com) | email: [info@affinityrealestate.com](mailto:info@affinityrealestate.com) | office: 218-237-3333 | fax:218-237-3377

**Affinity**  
REAL ESTATE INC

**\$389,000**  
MLS 6654565 Residential  
3123 Clover Court  
Bemidji MN 56601



website: [www.AffinityRealEstate.com](http://www.AffinityRealEstate.com) | email: [info@affinityrealestate.com](mailto:info@affinityrealestate.com) | office: 218-237-3333 | fax:218-237-3377

**Affinity**  
REAL ESTATE INC

**\$389,000**  
MLS 6654565 Residential  
3123 Clover Court  
Bemidji MN 56601





website: [www.AffinityRealEstate.com](http://www.AffinityRealEstate.com) | email: [info@affinityrealestate.com](mailto:info@affinityrealestate.com) | office: 218-237-3333 | fax: 218-237-3377

**Affinity**  
REAL ESTATE INC

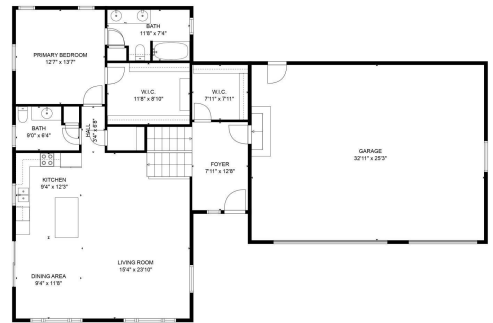
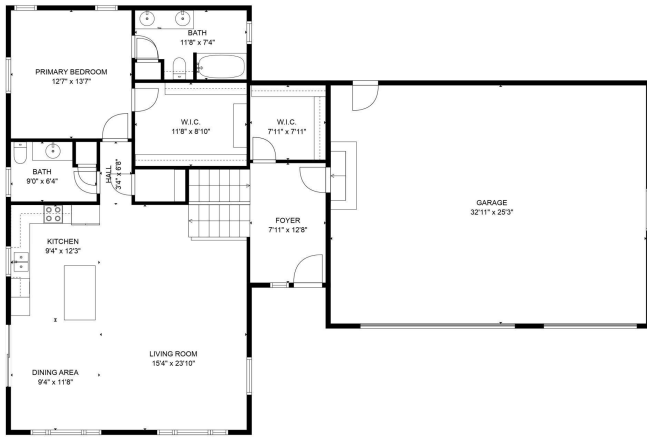
**\$389,000**  
MLS 6654565 Residential  
3123 Clover Court  
Bemidji MN 56601



website: [www.AffinityRealEstate.com](http://www.AffinityRealEstate.com) | email: [info@affinityrealestate.com](mailto:info@affinityrealestate.com) | office: 218-237-3333 | fax:218-237-3377

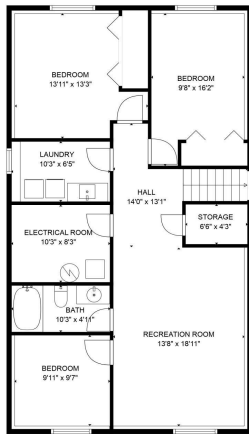


**\$389,000**  
MLS 6654565 Residential  
3123 Clover Court  
Bemidji MN 56601



TOTAL: 2263 sq. ft.  
 BELOW GROUND: 195 sq. ft., FLOOR 2: 1268 sq. ft.  
 EXCLUDED AREAS: ELECTRICAL ROOM: 85 sq. ft., STORAGE: 27 sq. ft., GARAGE: 832 sq. ft.  
 FLOOR PLAN CREATED BY CURICOLA A/R. MEASUREMENTS DEEMED HIGHLY RELIABLE BUT NOT GUARANTEED.

TOTAL: 2263 sq. ft.  
 BELOW GROUND: 195 sq. ft., FLOOR 2: 1268 sq. ft.  
 EXCLUDED AREAS: ELECTRICAL ROOM: 85 sq. ft., STORAGE: 27 sq. ft., GARAGE: 832 sq. ft.  
 FLOOR PLAN CREATED BY CURICOLA A/R. MEASUREMENTS DEEMED HIGHLY RELIABLE BUT NOT GUARANTEED.



TOTAL: 2263 sq. ft.  
 BELOW GROUND: 195 sq. ft., FLOOR 2: 1268 sq. ft.  
 EXCLUDED AREAS: ELECTRICAL ROOM: 85 sq. ft., STORAGE: 27 sq. ft., GARAGE: 832 sq. ft.  
 FLOOR PLAN CREATED BY CURICOLA A/R. MEASUREMENTS DEEMED HIGHLY RELIABLE BUT NOT GUARANTEED.

website: [www.AffinityRealEstate.com](http://www.AffinityRealEstate.com) | email: [info@affinityrealestate.com](mailto:info@affinityrealestate.com) | office: 218-237-3333 | fax: 218-237-3377



**\$389,000**  
 MLS 6654565 Residential  
 3123 Clover Court  
 Bemidji MN 56601