



MLS 6654769 Land

\$450,000

10.21 Acres
Raw Land

XXXX Luce Street
Perham MN 56573

Status: Pending

Description:

Prime commercial property! Located along U.S. Hwy 10 and Co Hwy 60 between Frazee and Perham. 10.21 total acres ready for your new venture. Easy access, nice lot, and huge exposure! This is a great building location for most any business and an excellent investment opportunity. Located only 6 miles from Perham, Frazee, and Vergas. Listing includes two parcels bordering each other.

Additional Details:

Lot Acres	10.21
Lot Dimensions	10.21 acres
School District	23
Taxes	\$692
Taxes with Assessments	\$692
Tax Year	2024

Additional Features:

Driving Directions:

Located at the intersection of U.S. Hwy 10 and Co. Hwy 60 between Frazee and Perham.



Listed By:
Counselor Realty Detroit Lakes

Affinity Real Estate Inc. participates in the Regional Multiple Listing Service of Minnesota, Inc Broker Reciprocity (sm) program, allowing us to display other broker's listings on our website. All properties are subject to prior sale, change or withdrawal.



Call Affinity Real Estate

218-237-3333

info@affinityrealestate.com



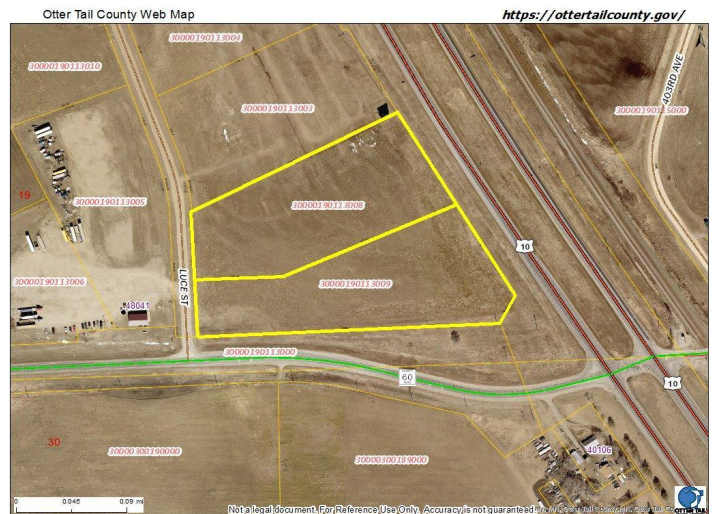
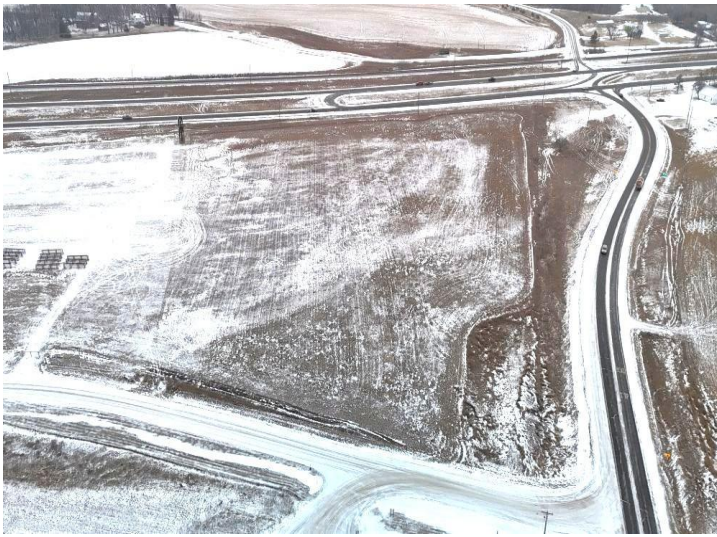
Affinity Real Estate - 600 Park Avenue South - Park Rapids MN 56470



website: www.AffinityRealEstate.com | email: info@affinityrealestate.com | office: 218-237-3333 | fax: 218-237-3377



\$450,000
 MLS 6654769 Land
 XXXX Luce Street
 Perham MN 56573



website: www.AffinityRealEstate.com | email: info@affinityrealestate.com | office: 218-237-3333 | fax: 218-237-3377



\$450,000
 MLS 6654769 Land
 XXXX Luce Street
 Perham MN 56573