



MLS 6654968 Residential

\$159,900

1,972 sq ft
4 bedrooms
1 baths

2325 Roosevelt Road
Bemidji MN 56601

Status: Pending

Description:

Looking for a project with endless possibilities? This 4-bedroom, 1-bath home sits on over 8 acres of prime land just a short drive from town! This home offers an unfinished basement boast tons of potential, featuring a classic layout that just needs a little TLC to make it your own. Whether you're an experienced DIYer or looking to invest in a property with big upside, this is your chance to create your dream home.

The sprawling 8+ acres provide ample space for outdoor activities, gardening, or even expansion. It's the perfect blend of country living with easy access to all the conveniences of town. Don't miss out on this opportunity to transform this property into your dream home! Call today to schedule a showing.

Additional Details:

Year Built	1940
Lot Acres	8.46
Lot Dimensions	200x1850
School District	31
Taxes	\$2,124
Taxes with Assessments	\$2,124
Tax Year	2024

Additional Features:

Basement: Block, Full, Unfinished **Fuel:** Natural Gas **Heat:** Forced Air **Sewer:** Private Sewer, Septic System Compliant - No **Water:** Private **Air Conditioning:** None

Driving Directions:

Paul Bunyan Dr Se to left on Roosevelt Rd SE, follow to property on the left.



Listed By:
Real Broker, LLC

Affinity Real Estate Inc. participates in the Regional Multiple Listing Service of Minnesota, Inc Broker Reciprocity (sm) program, allowing us to display other broker's listings on our website. All properties are subject to prior sale, change or withdrawal.



Call Affinity Real Estate

218-237-3333

info@affinityrealestate.com



Affinity Real Estate - 600 Park Avenue South - Park Rapids MN 56470



website: www.AffinityRealEstate.com | email: info@affinityrealestate.com | office: 218-237-3333 | fax:218-237-3377

Affinity
REAL ESTATE INC

\$159,900
MLS 6654968 Residential
2325 Roosevelt Road
Bemidji MN 56601



website: www.AffinityRealEstate.com | email: info@affinityrealestate.com | office: 218-237-3333 | fax:218-237-3377

Affinity
REAL ESTATE INC

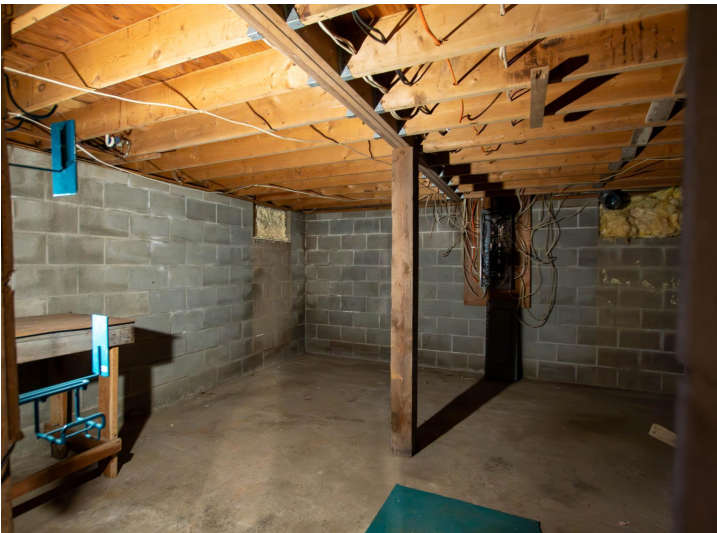
\$159,900
MLS 6654968 Residential
2325 Roosevelt Road
Bemidji MN 56601



website: www.AffinityRealEstate.com | email: info@affinityrealestate.com | office: 218-237-3333 | fax:218-237-3377



\$159,900
MLS 6654968 Residential
2325 Roosevelt Road
Bemidji MN 56601



website: www.AffinityRealEstate.com | email: info@affinityrealestate.com | office: 218-237-3333 | fax:218-237-3377

Affinity
REAL ESTATE INC

\$159,900
MLS 6654968 Residential
2325 Roosevelt Road
Bemidji MN 56601



website: www.AffinityRealEstate.com | email: info@affinityrealestate.com | office: 218-237-3333 | fax:218-237-3377

Affinity
REAL ESTATE INC

\$159,900
MLS 6654968 Residential
2325 Roosevelt Road
Bemidji MN 56601



website: www.AffinityRealEstate.com | email: info@affinityrealestate.com | office: 218-237-3333 | fax:218-237-3377



\$159,900
MLS 6654968 Residential
2325 Roosevelt Road
Bemidji MN 56601