



MLS 6655586 Residential

\$179,900

1,344 sq ft
3 bedrooms
2 baths

410 Jefferson Avenue
Sebeka MN 56477

Status: Active

Description:

RE DECORATED.....will be move in ready, fenced yard, concrete slab for basketball court. 3 bedrooms, master bedroom bath. Main level laundry. 2car attached garage. Single car detached garage, Bunk house with kitchen area for entertaining.

Additional Details:

| | |
|------------------------|-----------------------|
| Year Built | 1999 |
| Lot Acres | 0.46 |
| Lot Dimensions | 107 x 200 x 107 x 200 |
| Garage Stalls | 3 |
| School District | 820 |
| Taxes | \$2,242 |
| Taxes with Assessments | \$2,242 |
| Tax Year | 2024 |

Additional Features:

Fuel: Natural Gas **Heat:** Forced Air

Driving Directions:

from the intersection of US HWY 71 and 280th St. (Minnesota Ave) in Sebeka; East on 280th St. 3 1/2 blocks to Jefferson Ave S; South on Jefferson Ave approx 1/4 mile to subject on your left.



Listed By:
The Gores Company

Affinity Real Estate Inc. participates in the Regional Multiple Listing Service of Minnesota, Inc Broker Reciprocity (sm) program, allowing us to display other broker's listings on our website. All properties are subject to prior sale, change or withdrawal.



Call Affinity Real Estate

218-237-3333

info@affinityrealestate.com



Affinity Real Estate - 600 Park Avenue South - Park Rapids MN 56470



website: www.AffinityRealEstate.com | email: info@affinityrealestate.com | office: 218-237-3333 | fax:218-237-3377



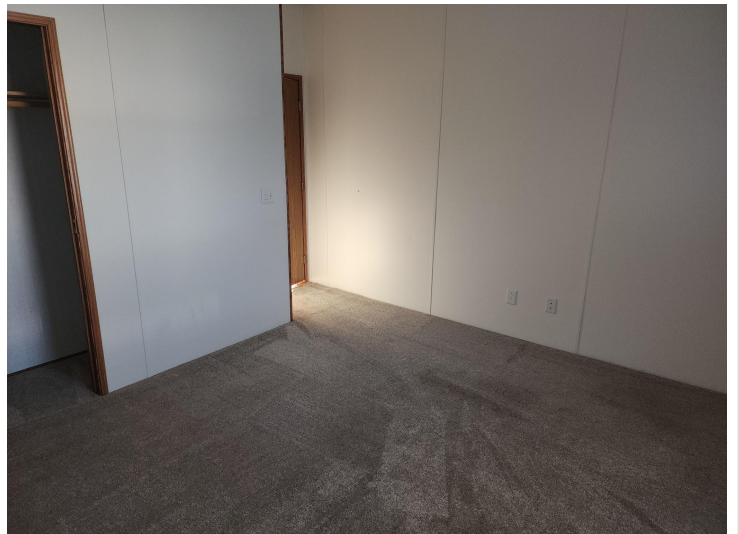
\$179,900
MLS 6655586 Residential
410 Jefferson Avenue
Sebeka MN 56477



website: www.AffinityRealEstate.com | email: info@affinityrealestate.com | office: 218-237-3333 | fax:218-237-3377

Affinity
REAL ESTATE INC

\$179,900
MLS 6655586 Residential
410 Jefferson Avenue
Sebeka MN 56477



website: www.AffinityRealEstate.com | email: info@affinityrealestate.com | office: 218-237-3333 | fax:218-237-3377

Affinity
REAL ESTATE INC

\$179,900
MLS 6655586 Residential
410 Jefferson Avenue
Sebeka MN 56477



website: www.AffinityRealEstate.com | email: info@affinityrealestate.com | office: 218-237-3333 | fax:218-237-3377



\$179,900
MLS 6655586 Residential
410 Jefferson Avenue
Sebeka MN 56477