

MLS 6655614 Land

**\$275,000**

151.22 Acres  
Raw Land

12031 State 64  
Akeley MN 56433

Status: Active

**Description:**

Introducing the Akeley 151! Located in Hubbard county, known for some great whitetail hunting. This tract sits in a perfect square with multiple access points to be able to hunt the favorable wind. The property consists of timber islands surrounded by bedding, creeks, and some lower ground. Big buck hunters will appreciate the diverse terrain of the land. Game trails and sign boast through the property. With multiple areas to add food plots and stands, a ton of opportunity awaits. Whitetails, bear, grouse and waterfowl are present on the property. A cabin or deer camp set up can be a breeze with electricity close by. Enjoy the 1000s of acres of public land that connects to the property as well. Read for its next deer camp to be established.

**Additional Details:**

Lot Acres	151.22
Lot Dimensions	151ac
School District	113
Taxes	\$58
Taxes with Assessments	\$58
Tax Year	2024

**Additional Features:**

**Driving Directions:**

From Akeley head south on HWY 64, property will be on the right hand side



Listed By:  
American Legacy Land Co., LLC

Affinity Real Estate Inc. participates in the Regional Multiple Listing Service of Minnesota, Inc Broker Reciprocity (sm) program, allowing us to display other broker's listings on our website. All properties are subject to prior sale, change or withdrawal.



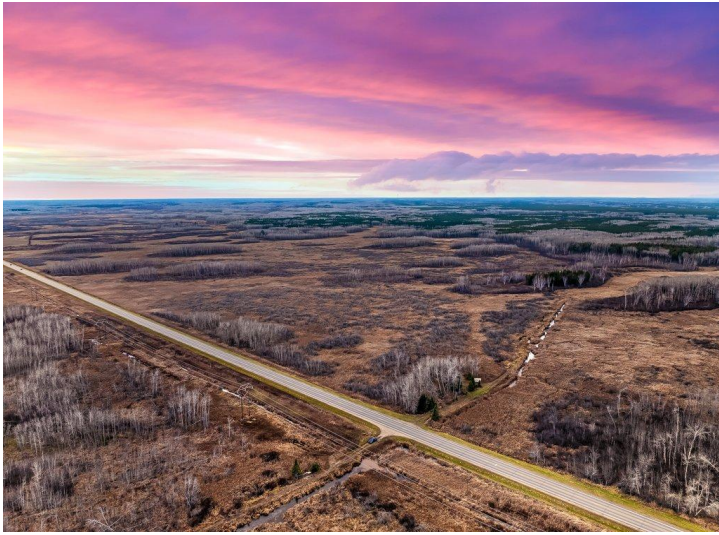
**Call Affinity Real Estate**

**218-237-3333**

**info@affinityrealestate.com**



**Affinity Real Estate - 600 Park Avenue South - Park Rapids MN 56470**



website: [www.AffinityRealEstate.com](http://www.AffinityRealEstate.com) | email: [info@affinityrealestate.com](mailto:info@affinityrealestate.com) | office: 218-237-3333 | fax:218-237-3377



**\$275,000**  
MLS 6655614 Land  
12031 State 64  
Akeley MN 56433



website: [www.AffinityRealEstate.com](http://www.AffinityRealEstate.com) | email: [info@affinityrealestate.com](mailto:info@affinityrealestate.com) | office: 218-237-3333 | fax:218-237-3377



**\$275,000**  
MLS 6655614 Land  
12031 State 64  
Akeley MN 56433



website: [www.AffinityRealEstate.com](http://www.AffinityRealEstate.com) | email: [info@affinityrealestate.com](mailto:info@affinityrealestate.com) | office: 218-237-3333 | fax:218-237-3377



**\$275,000**  
MLS 6655614 Land  
12031 State 64  
Akeley MN 56433



website: [www.AffinityRealEstate.com](http://www.AffinityRealEstate.com) | email: [info@affinityrealestate.com](mailto:info@affinityrealestate.com) | office: 218-237-3333 | fax: 218-237-3377



**\$275,000**  
MLS 6655614 Land  
12031 State 64  
Akeley MN 56433



website: [www.AffinityRealEstate.com](http://www.AffinityRealEstate.com) | email: [info@affinityrealestate.com](mailto:info@affinityrealestate.com) | office: 218-237-3333 | fax:218-237-3377



**\$275,000**  
MLS 6655614 Land  
12031 State 64  
Akeley MN 56433



website: [www.AffinityRealEstate.com](http://www.AffinityRealEstate.com) | email: [info@affinityrealestate.com](mailto:info@affinityrealestate.com) | office: 218-237-3333 | fax:218-237-3377



**\$275,000**  
MLS 6655614 Land  
12031 State 64  
Akeley MN 56433



website: [www.AffinityRealEstate.com](http://www.AffinityRealEstate.com) | email: [info@affinityrealestate.com](mailto:info@affinityrealestate.com) | office: 218-237-3333 | fax:218-237-3377



**\$275,000**  
MLS 6655614 Land  
12031 State 64  
Akeley MN 56433





website: [www.AffinityRealEstate.com](http://www.AffinityRealEstate.com) | email: [info@affinityrealestate.com](mailto:info@affinityrealestate.com) | office: 218-237-3333 | fax:218-237-3377



**\$275,000**  
MLS 6655614 Land  
12031 State 64  
Akeley MN 56433