



MLS 6656377 Lake Home

\$450,000

1,512 sq ft
2 bedrooms
2 baths

39067 County Highway 34
Ogema MN 56569

Waterfront: Unnamed Lake

Status: Hold

Description:

Escape to your own private retreat with this one-of-a-kind custom log home nestled on 34.65 acres of breathtaking wooded land. Overlooking a serene private lake, this stunning home boasts an open-concept floor plan with rustic charm and modern comforts.

The heart of the home is the spacious kitchen, featuring a large island perfect for meal prep, entertaining, or gathering with loved ones.

The spacious main floor bedroom features his & hers closets and a private $\frac{3}{4}$ bath with a dual vanity, plus an additional half bath for guests. Head up to the loft area for an even more spectacular view of your scenic surroundings.

Looking for more space? The unfinished walkout basement offers room to grow, with potential for two additional bedrooms, a bathroom (already plumbed), and ample storage.

Outside, enjoy the convenience of a 2-stall attached garage plus a steel building to house all your toys and equipment. Beautifully landscaped grounds, featuring perennials and flower gardens. If you're looking for privacy, nature, and endless possibilities, this custom log home is truly a dream come true!

Additional Details:

Year Built	1988
Lot Acres	34.65
Lot Dimensions	Irregular
Garage Stalls	2
School District	435
Taxes	\$1,760
Taxes with Assessments	\$1,820
Tax Year	2024

Additional Features:

Electric Fuel: Electric, Propane Garage: 2 Heat: Forced Air, Oil Septic Water: Well Air Conditioning: Central Air
 Listed By: REALTY XPRTS

Affinity Real Estate Inc. participates in the Regional Multiple Listing Service of Minnesota, Inc Broker Reciprocity (sm) program, allowing us to display other broker's listings on our website. All properties are subject to prior sale, change or withdrawal.



Call Affinity Real Estate

218-237-3333

info@affinityrealestate.com



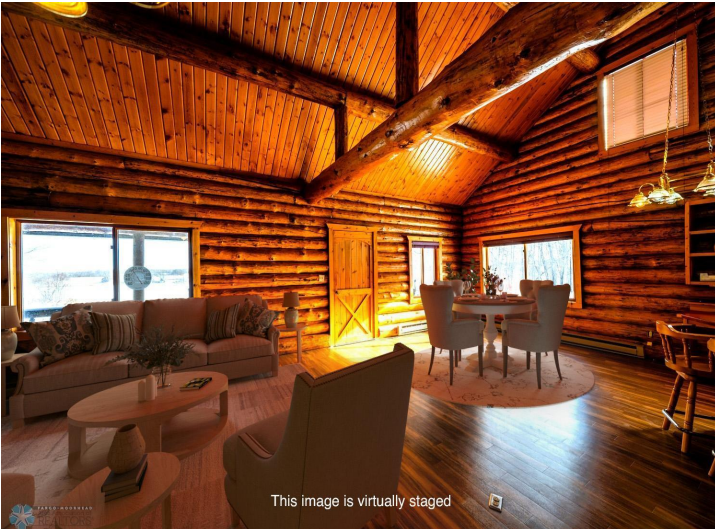
Affinity Real Estate - 600 Park Avenue South - Park Rapids MN 56470



website: www.AffinityRealEstate.com | email: info@affinityrealestate.com | office: 218-237-3333 | fax: 218-237-3377

Affinity
REAL ESTATE INC

\$450,000
MLS 6656377 Lake Home
39067 County Highway 34
Ogema MN 56569

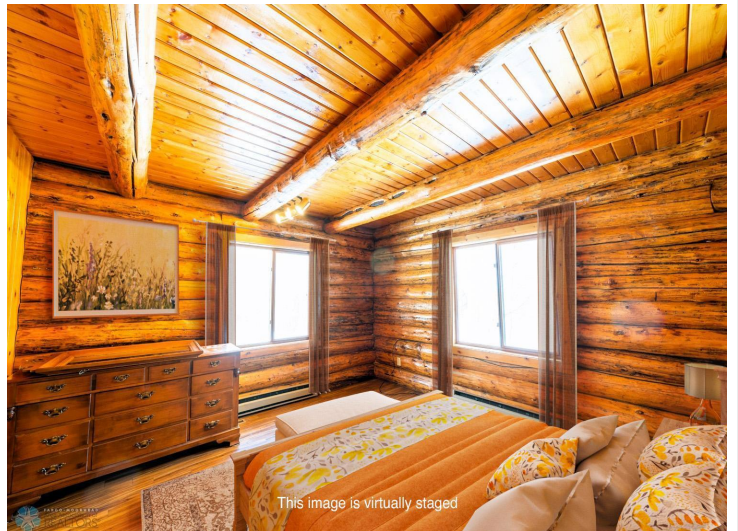


website: www.AffinityRealEstate.com | email: info@affinityrealestate.com | office: 218-237-3333 | fax: 218-237-3377

Affinity
REAL ESTATE INC

\$450,000

MLS 6656377 Lake Home
39067 County Highway 34
Ogema MN 56569



website: www.AffinityRealEstate.com | email: info@affinityrealestate.com | office: 218-237-3333 | fax: 218-237-3377

Affinity
REAL ESTATE INC

\$450,000
MLS 6656377 Lake Home
39067 County Highway 34
Ogema MN 56569



website: www.AffinityRealEstate.com | email: info@affinityrealestate.com | office: 218-237-3333 | fax: 218-237-3377

Affinity
REAL ESTATE INC

\$450,000
MLS 6656377 Lake Home
39067 County Highway 34
Ogema MN 56569



website: www.AffinityRealEstate.com | email: info@affinityrealestate.com | office: 218-237-3333 | fax: 218-237-3377

Affinity
REAL ESTATE INC

\$450,000

MLS 6656377 Lake Home
39067 County Highway 34
Ogema MN 56569



website: www.AffinityRealEstate.com | email: info@affinityrealestate.com | office: 218-237-3333 | fax: 218-237-3377



\$450,000

MLS 6656377 Lake Home
39067 County Highway 34
Ogema MN 56569



website: www.AffinityRealEstate.com | email: info@affinityrealestate.com | office: 218-237-3333 | fax: 218-237-3377



\$450,000

MLS 6656377 Lake Home
39067 County Highway 34
Ogema MN 56569

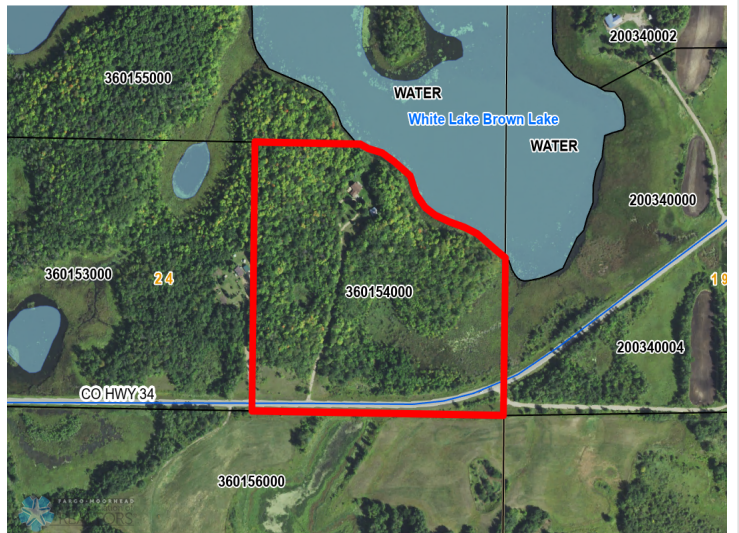


website: www.AffinityRealEstate.com | email: info@affinityrealestate.com | office: 218-237-3333 | fax: 218-237-3377



\$450,000

MLS 6656377 Lake Home
39067 County Highway 34
Ogema MN 56569



website: www.AffinityRealEstate.com | email: info@affinityrealestate.com | office: 218-237-3333 | fax: 218-237-3377



\$450,000

MLS 6656377 Lake Home
39067 County Highway 34
Ogema MN 56569