

MLS 6656838 Land

\$74,900

10 Acres
Raw Land

TBD * 32nd Street
Pine River MN 56474

Status: Active

Description:

Take your “pick of the litter” from these four prime 10 acre building sites located just 2 miles from city amenities. Three of the parcels are nicely timbered and the fourth has primarily open ground with minimal tree coverage. The lots are all surveyed with electric available on the township road. Put your building plans together and take advantage of these idyllic tracts.

Additional Details:

Lot Acres	10
Lot Dimensions	330x1320
School District	2174
Taxes	\$1
Taxes with Assessments	\$1
Tax Year	2024

Additional Features:

Driving Directions:

FROM PINE RIVER, 2 MILES SOUTH ON HWY. 371 THEN LEFT ON 32ND ST. SW FOR 3 MILES PARCEL ON RIGHT.



Listed By:
Heartland Real Estate

Affinity Real Estate Inc. participates in the Regional Multiple Listing Service of Minnesota, Inc Broker Reciprocity (sm) program, allowing us to display other broker’s listings on our website. All properties are subject to prior sale, change or withdrawal.



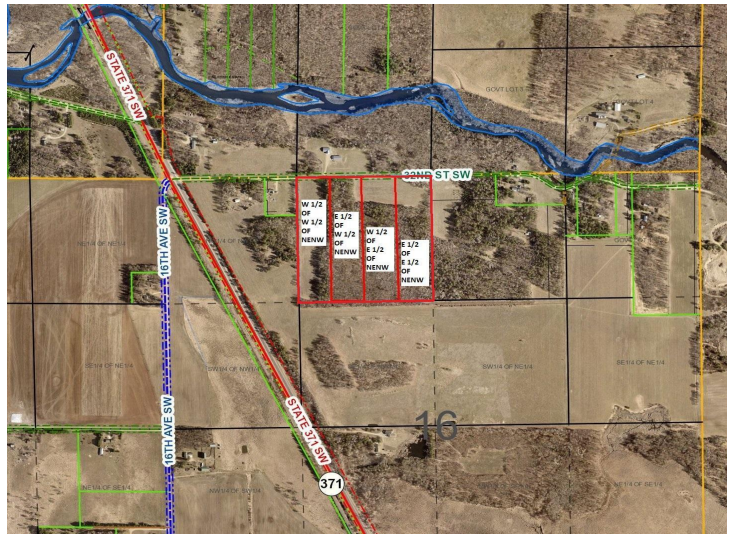
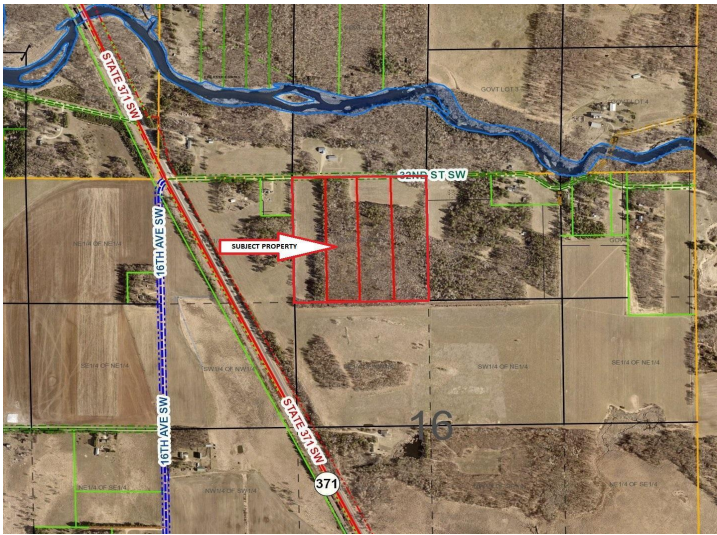
Call Affinity Real Estate

218-237-3333

info@affinityrealestate.com



Affinity Real Estate - 600 Park Avenue South - Park Rapids MN 56470



website: www.AffinityRealEstate.com | email: info@affinityrealestate.com | office: 218-237-3333 | fax:218-237-3377



\$74,900
 MLS 6656838 Land
 TBD * 32nd Street
 Pine River MN 56474