



MLS 6657043 Lake Home

\$697,499

2,490 sq ft
3 bedrooms
3 baths

12465 Blue Spruce Road
Menahga MN 56464

Waterfront: Hinds

Status: Active

Description:

Experience the perfect blend of tranquility and adventure with this stunning home set on 10.7 acres of prime property with 1,100 feet of pristine Hinds Lake shoreline. Inside, you'll find a soaring vaulted ceiling, warm hardwood floors, striking exposed cedar beams, and a cozy loft space perfect for relaxing. The centerpiece of the living area is a charming wood-burning fireplace, adding both warmth and ambiance.

The two-stall garage comes complete with a spacious 12' x 30' insulated workshop, and an inviting 14' x 8' wood-burning sauna offers a serene retreat. Just minutes from Park Rapids, this property is a dream for outdoor enthusiasts. Whether you're casting a line into Hinds Lake's excellent fishing waters or exploring the nearby woods for hunting, there's no shortage of adventure. When winter arrives, enjoy access to well-maintained snowmobile trails, and as the seasons change, switch gears to four-wheeling through the beautiful Minnesota landscape.

This unique property offers endless possibilities for outdoor recreation. Don't miss out—schedule your showing today and step into the ultimate lifestyle!

Additional Details:

Year Built	2010
Lot Acres	10.7
Lot Dimensions	1100 x 367 x 1100 x 218
Garage Stalls	2
School District	309
Taxes	\$2,182
Taxes with Assessments	\$2,182
Tax Year	2024

Additional Features:

Fuel: Electric, Propane, Wood **Heat:** Forced Air, Fireplace(s), Heat Pump

Driving Directions:

From Hwy 71/24 in Park Rapids, South on Hwy 71, turn left on 87th Ave. turn right on 100th St to a right on Blue Spruce Rd. Listed by Coldwell Banker Realty



Call Affinity Real Estate

218-237-3333

info@affinityrealestate.com



Affinity Real Estate - 600 Park Avenue South - Park Rapids MN 56470



website: www.AffinityRealEstate.com | email: info@affinityrealestate.com | office: 218-237-3333 | fax:218-237-3377



\$697,499
MLS 6657043 Lake Home
12465 Blue Spruce Road
Menahga MN 56464



website: www.AffinityRealEstate.com | email: info@affinityrealestate.com | office: 218-237-3333 | fax: 218-237-3377

Affinity
REAL ESTATE INC

\$697,499
MLS 6657043 Lake Home
12465 Blue Spruce Road
Menahga MN 56464



website: www.AffinityRealEstate.com | email: info@affinityrealestate.com | office: 218-237-3333 | fax:218-237-3377

Affinity
REAL ESTATE INC

\$697,499
MLS 6657043 Lake Home
12465 Blue Spruce Road
Menahga MN 56464



website: www.AffinityRealEstate.com | email: info@affinityrealestate.com | office: 218-237-3333 | fax: 218-237-3377

Affinity
REAL ESTATE INC

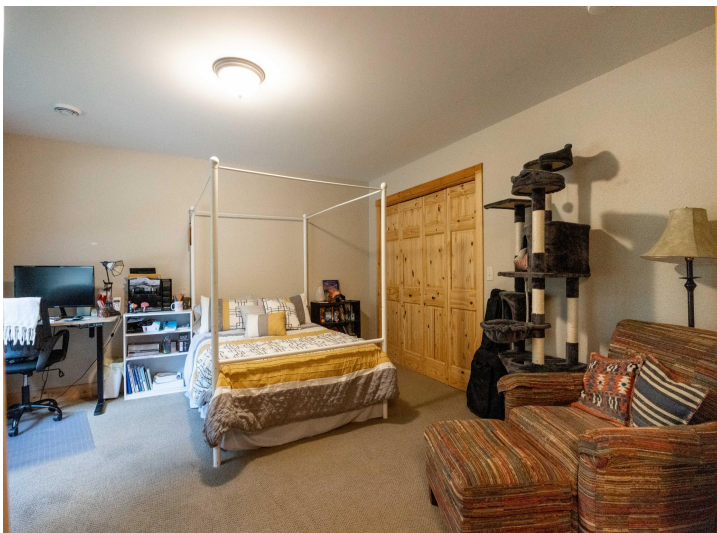
\$697,499
MLS 6657043 Lake Home
12465 Blue Spruce Road
Menahga MN 56464



website: www.AffinityRealEstate.com | email: info@affinityrealestate.com | office: 218-237-3333 | fax:218-237-3377



\$697,499
MLS 6657043 Lake Home
12465 Blue Spruce Road
Menahga MN 56464



website: www.AffinityRealEstate.com | email: info@affinityrealestate.com | office: 218-237-3333 | fax: 218-237-3377

Affinity
REAL ESTATE INC

\$697,499
MLS 6657043 Lake Home
12465 Blue Spruce Road
Menahga MN 56464



website: www.AffinityRealEstate.com | email: info@affinityrealestate.com | office: 218-237-3333 | fax: 218-237-3377

Affinity
REAL ESTATE INC

\$697,499
MLS 6657043 Lake Home
12465 Blue Spruce Road
Menahga MN 56464



website: www.AffinityRealEstate.com | email: info@affinityrealestate.com | office: 218-237-3333 | fax:218-237-3377

Affinity
REAL ESTATE INC

\$697,499
MLS 6657043 Lake Home
12465 Blue Spruce Road
Menahga MN 56464



website: www.AffinityRealEstate.com | email: info@affinityrealestate.com | office: 218-237-3333 | fax:218-237-3377

Affinity
REAL ESTATE INC

\$697,499
MLS 6657043 Lake Home
12465 Blue Spruce Road
Menahga MN 56464



website: www.AffinityRealEstate.com | email: info@affinityrealestate.com | office: 218-237-3333 | fax:218-237-3377

Affinity
REAL ESTATE INC

\$697,499
MLS 6657043 Lake Home
12465 Blue Spruce Road
Menahga MN 56464