



MLS 6657087 Lake Land

\$285,000

Description:

Outstanding views and prime location! This 1.64 acre lot with 227 feet of shared water frontage is situated on a high spot on Lake Melissa and offers amazing sunset views. Build your dream home or your lake cabin, the choice is yours! Lot 1 is also for sale, can be purchased together for a total of 2.74 acres with half of the 227 feet of shared lake frontage. (Last 2 pictures are renderings of an approved shop/home that could be built on the property)

Additional Details:

Lot Acres	1.64
Lot Dimensions	620 x 115
School District	22
Taxes	\$1,346
Taxes with Assessments	\$1,346
Tax Year	2024

Additional Features:

Driving Directions:

Turn west of Hwy 59 onto W Meadow Lake LN and then turn immediately left onto County Hwy 17 and the lot is to your immediate right. Easement allows you to use first driveway to your right to access property.



Listed By:
Prime Realty

Affinity Real Estate Inc. participates in the Regional Multiple Listing Service of Minnesota, Inc Broker Reciprocity (sm) program, allowing us to display other broker's listings on our website. All properties are subject to prior sale, change or withdrawal.



Call Affinity Real Estate

218-237-3333

info@affinityrealestate.com



Affinity Real Estate - 600 Park Avenue South - Park Rapids MN 56470



website: www.AffinityRealEstate.com | email: info@affinityrealestate.com | office: 218-237-3333 | fax: 218-237-3377

Affinity
REAL ESTATE INC

\$285,000

MLS 6657087 Lake Land
12176 County Highway 17,
Lot 2
Detroit Lakes MN 56501

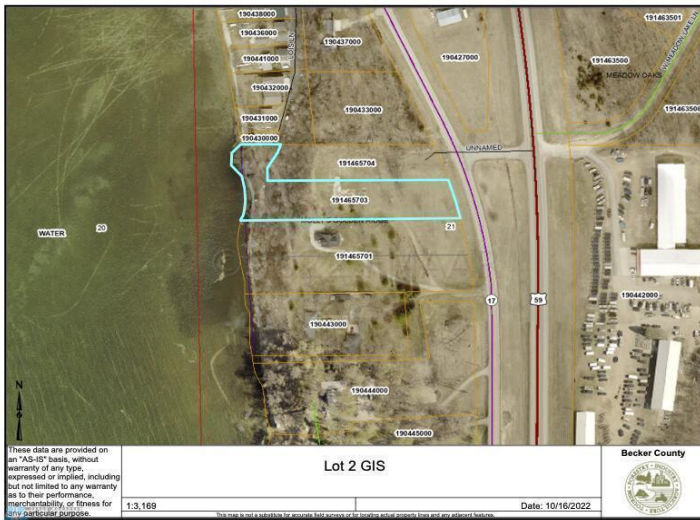


website: www.AffinityRealEstate.com | email: info@affinityrealestate.com | office: 218-237-3333 | fax: 218-237-3377

Affinity
REAL ESTATE INC

\$285,000

MLS 6657087 Lake Land
12176 County Highway 17,
Lot 2
Detroit Lakes MN 56501



website: www.AffinityRealEstate.com | email: info@affinityrealestate.com | office: 218-237-3333 | fax: 218-237-3377

Affinity
REAL ESTATE INC

\$285,000
MLS 6657087 Lake Land
12176 County Highway 17,
Lot 2
Detroit Lakes MN 56501