



MLS 6657286 Land

**\$200,000**

1.93 Acres  
Subdivided

L10,B2 Sanctuary Lane  
Brainerd MN 56401

Status: Active

#### Description:

Sanctuary Ridge is the Brainerd Lakes Area's newest neighborhood, and is officially open for business. Choose from 15 wooded lots, several with impressive views of the Gull River. You'll love the private location, nestled in the forest, yet minutes from the conveniences of Baxter. If outdoor recreation is what you're looking for, that's right out your back door. Also located just minutes from world class golf, fishing, fine dining, and everything else that comes with living in the Brainerd Lakes Area. Come take a look today and secure your spot in Sanctuary Ridge!

#### Additional Details:

Lot Acres	1.93
Lot Dimensions	111x58x443x185x120x189x431
School District	181
Taxes	\$290
Taxes with Assessments	\$290
Tax Year	2025

#### Additional Features:

#### Driving Directions:

From Baxter, west on CR 77, North on Sanctuary Way, stay left to Sanctuary Lane



Listed By:  
Positive Realty

Affinity Real Estate Inc. participates in the Regional Multiple Listing Service of Minnesota, Inc Broker Reciprocity (sm) program, allowing us to display other broker's listings on our website. All properties are subject to prior sale, change or withdrawal.



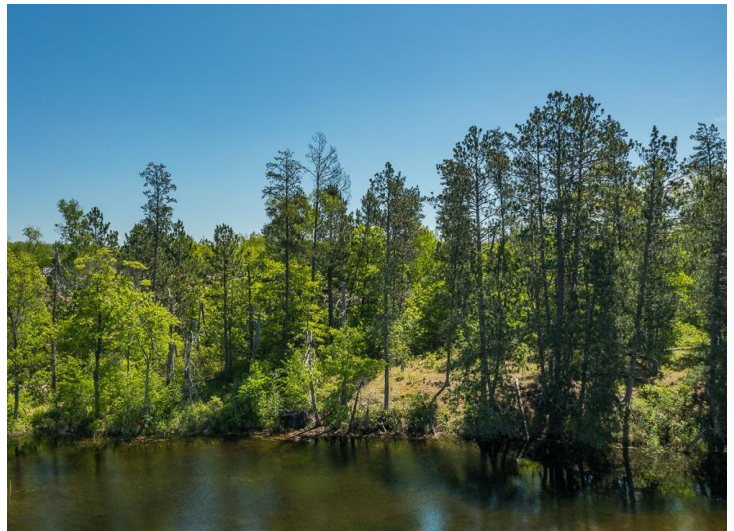
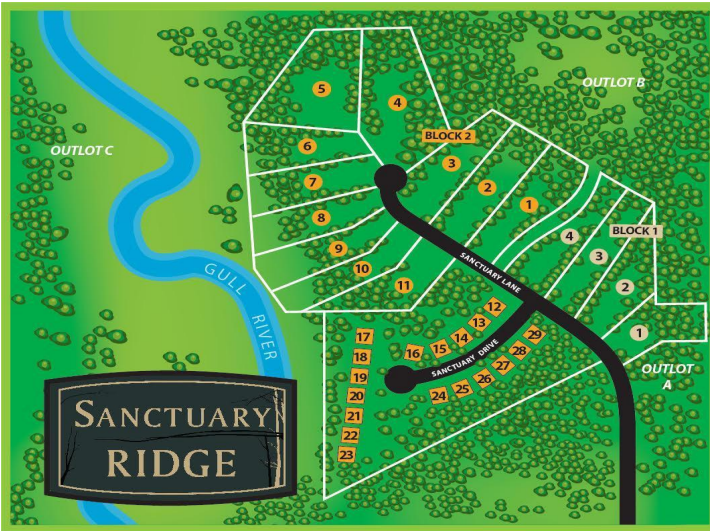
Call Affinity Real Estate

**218-237-3333**

[info@affinityrealestate.com](mailto:info@affinityrealestate.com)



Affinity Real Estate - 600 Park Avenue South - Park Rapids MN 56470



website: [www.AffinityRealEstate.com](http://www.AffinityRealEstate.com) | email: [info@affinityrealestate.com](mailto:info@affinityrealestate.com) | office: 218-237-3333 | fax: 218-237-3377



**\$200,000**  
 MLS 6657286 Land  
 L10,B2 Sanctuary Lane  
 Brainerd MN 56401



website: [www.AffinityRealEstate.com](http://www.AffinityRealEstate.com) | email: [info@affinityrealestate.com](mailto:info@affinityrealestate.com) | office: 218-237-3333 | fax: 218-237-3377



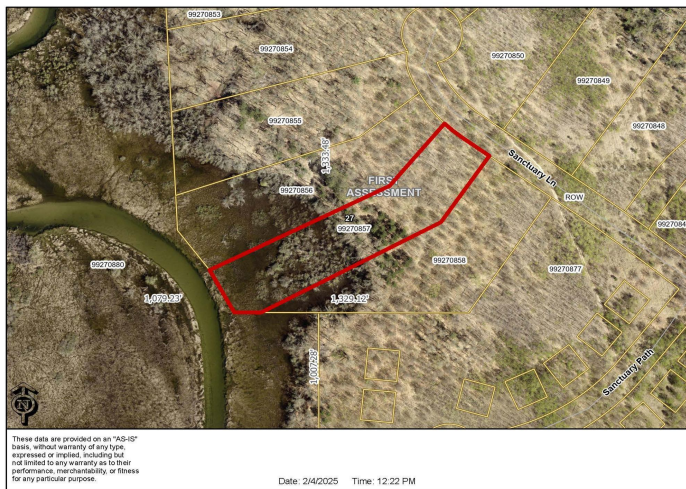
**\$200,000**  
MLS 6657286 Land  
L10,B2 Sanctuary Lane  
Brainerd MN 56401



website: [www.AffinityRealEstate.com](http://www.AffinityRealEstate.com) | email: [info@affinityrealestate.com](mailto:info@affinityrealestate.com) | office: 218-237-3333 | fax: 218-237-3377



**\$200,000**  
MLS 6657286 Land  
L10,B2 Sanctuary Lane  
Brainerd MN 56401



website: [www.AffinityRealEstate.com](http://www.AffinityRealEstate.com) | email: [info@affinityrealestate.com](mailto:info@affinityrealestate.com) | office: 218-237-3333 | fax: 218-237-3377



**\$200,000**  
 MLS 6657286 Land  
 L10,B2 Sanctuary Lane  
 Brainerd MN 56401

website: [www.AffinityRealEstate.com](http://www.AffinityRealEstate.com) | email: [info@affinityrealestate.com](mailto:info@affinityrealestate.com) | office: 218-237-3333 | fax:218-237-3377



**\$200,000**

MLS 6657286 Land  
L10,B2 Sanctuary Lane  
Brainerd MN 56401