



MLS 6657419 Residential

\$600,000

4,777 sq ft
3 bedrooms
3 baths

4545 Cartway Road
Bemidji MN 56601

Status: Active

Description:

If you are looking for space both inside and outside, come and see this rare find just northwest of Bemidji. Over 4700 sq ft of quality built above ground living space. Huge bedrooms and living areas. This home has a library, office, formal dining room and a room formerly used for exercise space. Attached garage that includes a workshop. Also includes a shed and a "cute as can be" playhouse and playground area. Dual fuel, large air exchanger, seamless steel siding and gutters, beautiful fireplace are just a few of the amenities. All of this on 21 acres of beautifully wooded property.

Additional Details:

Year Built	2000
Lot Acres	21.4
Lot Dimensions	800x1200
Garage Stalls	2
School District	31
Taxes	\$5,840
Taxes with Assessments	\$5,840
Tax Year	2024

Additional Features:

Basement: Block, Crawl Space **Fuel:** Electric, Propane **Garage:** 2 **Heat:** Baseboard, Boiler, Dual, Fireplace(s), Hot Water **Sewer:** Private Sewer, Tank with Drainage Field **Water:** Submersible - 4 Inch **Air Conditioning:** None

Driving Directions:

West on Hwy 2, right on Cardinal Rd, right on Cartway Rd.



Listed By:
Century 21 Dickinson

Affinity Real Estate Inc. participates in the Regional Multiple Listing Service of Minnesota, Inc Broker Reciprocity (sm) program, allowing us to display other broker's listings on our website. All properties are subject to prior sale, change or withdrawal.



Call Affinity Real Estate

218-237-3333

info@affinityrealestate.com



Affinity Real Estate - 600 Park Avenue South - Park Rapids MN 56470



website: www.AffinityRealEstate.com | email: info@affinityrealestate.com | office: 218-237-3333 | fax: 218-237-3377

Affinity
REAL ESTATE INC

\$600,000
MLS 6657419 Residential
4545 Cartway Road
Bemidji MN 56601



website: www.AffinityRealEstate.com | email: info@affinityrealestate.com | office: 218-237-3333 | fax: 218-237-3377

Affinity
REAL ESTATE INC

\$600,000
MLS 6657419 Residential
4545 Cartway Road
Bemidji MN 56601



website: www.AffinityRealEstate.com | email: info@affinityrealestate.com | office: 218-237-3333 | fax: 218-237-3377

Affinity
REAL ESTATE INC

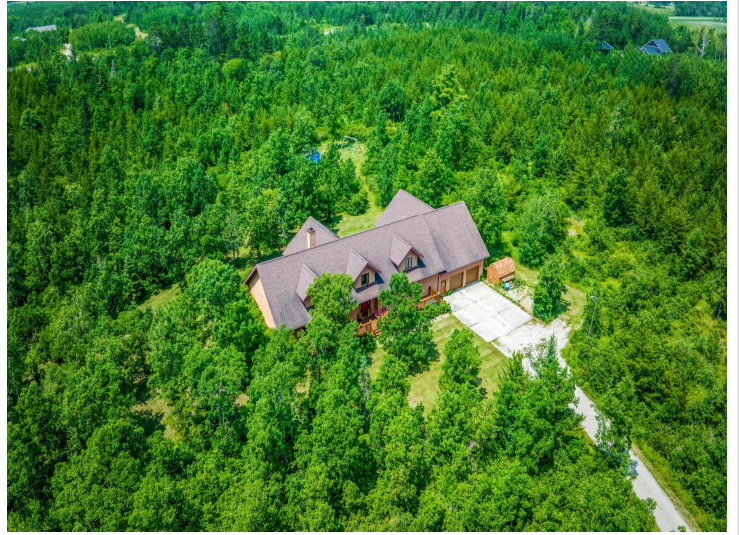
\$600,000
MLS 6657419 Residential
4545 Cartway Road
Bemidji MN 56601



website: www.AffinityRealEstate.com | email: info@affinityrealestate.com | office: 218-237-3333 | fax: 218-237-3377

Affinity
REAL ESTATE INC

\$600,000
MLS 6657419 Residential
4545 Cartway Road
Bemidji MN 56601



website: www.AffinityRealEstate.com | email: info@affinityrealestate.com | office: 218-237-3333 | fax: 218-237-3377

Affinity
REAL ESTATE INC

\$600,000
MLS 6657419 Residential
4545 Cartway Road
Bemidji MN 56601



website: www.AffinityRealEstate.com | email: info@affinityrealestate.com | office: 218-237-3333 | fax: 218-237-3377

Affinity
REAL ESTATE INC

\$600,000
MLS 6657419 Residential
4545 Cartway Road
Bemidji MN 56601



website: www.AffinityRealEstate.com | email: info@affinityrealestate.com | office: 218-237-3333 | fax: 218-237-3377



\$600,000
MLS 6657419 Residential
4545 Cartway Road
Bemidji MN 56601



website: www.AffinityRealEstate.com | email: info@affinityrealestate.com | office: 218-237-3333 | fax: 218-237-3377



\$600,000
 MLS 6657419 Residential
 4545 Cartway Road
 Bemidji MN 56601



website: www.AffinityRealEstate.com | email: info@affinityrealestate.com | office: 218-237-3333 | fax:218-237-3377



\$600,000
MLS 6657419 Residential
4545 Cartway Road
Bemidji MN 56601