



MLS 6657572 Residential

\$354,045

1,129 sq ft
2 bedrooms
2 baths

TBD Red Willow Drive
Frazee MN 56544

Status: Active

Description:

To be built. Check out the Red Willow Heights neighborhood, and make Frazee your home! Take advantage of the city's tax abatement program, utility credit, and reasonable permit fees by building in 2025 on this lot located in a prime area. Close to local businesses and schools. The Loft is a unique new floor plan that features a HUGE 22'x36' garage, along with a bathroom on the ground level. Upstairs contains 2 bedrooms, a bathroom with dual vanity, and a wide open kitchen and living area! The living area has large windows leading out the the front balcony. Home can be built by Mission Homes, or choose a plan and builder on your own. Covenants apply. The City of Frazee offers incentives to any new home constructed within city limits, including free water and sewer consumption, recycling and garbage for 1 (one) full year Lot is priced at \$19,145. Pictures are from a previously completed home. Not all features in pictures are included in this price.

Additional Details:

Year Built	2025
Lot Acres	0.34
Lot Dimensions	108x137
Garage Stalls	2
School District	23
Taxes	(unreported)
Taxes with Assessments	(unreported)
Tax Year	2025

Additional Features:

Basement: Slab **Fuel:** Natural Gas **Garage:** 2 **Heat:** Forced Air **Sewer:** City Sewer - In Street **Water:** City Water - In Street **Air Conditioning:** Central Air

Driving Directions:



Listed By:
eXp Realty (3788 FGO)

Affinity Real Estate Inc. participates in the Regional Multiple Listing Service of Minnesota, Inc Broker Reciprocity (sm) program, allowing us to display other broker's listings on our website. All properties are subject to prior sale, change or withdrawal.



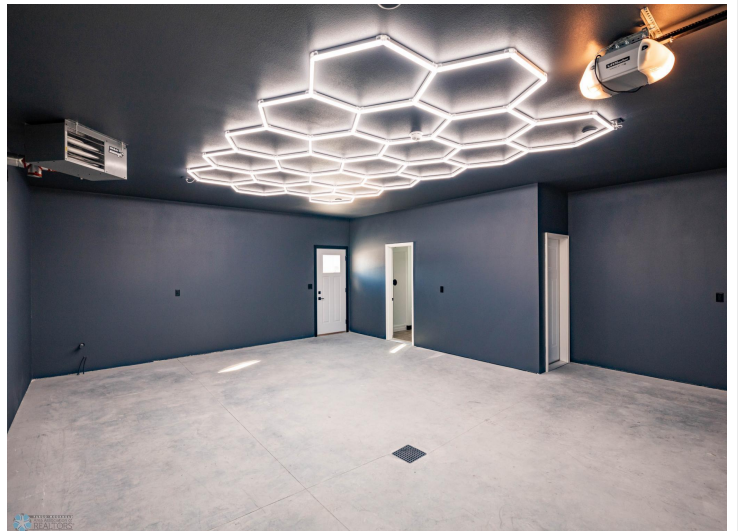
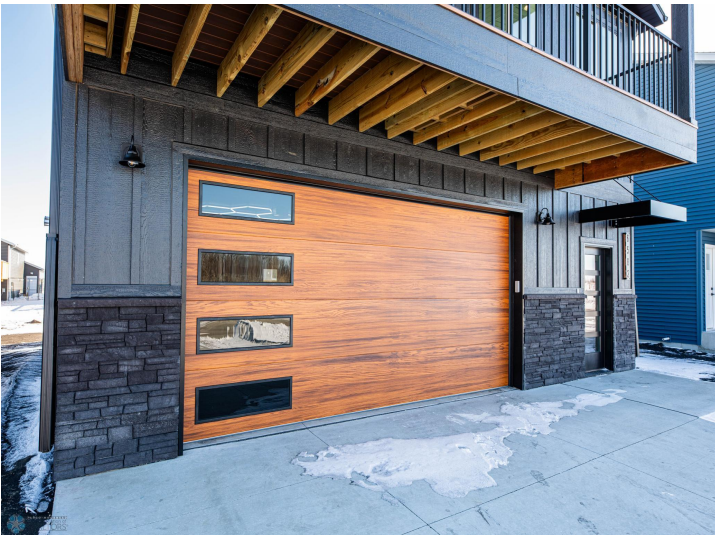
Call Affinity Real Estate

218-237-3333

info@affinityrealestate.com



Affinity Real Estate - 600 Park Avenue South - Park Rapids MN 56470



website: www.AffinityRealEstate.com | email: info@affinityrealestate.com | office: 218-237-3333 | fax: 218-237-3377

Affinity
REAL ESTATE INC

\$354,045
MLS 6657572 Residential
TBD Red Willow Drive
Frazee MN 56544



website: www.AffinityRealEstate.com | email: info@affinityrealestate.com | office: 218-237-3333 | fax: 218-237-3377

Affinity
REAL ESTATE INC

\$354,045
MLS 6657572 Residential
TBD Red Willow Drive
Frazee MN 56544



website: www.AffinityRealEstate.com | email: info@affinityrealestate.com | office: 218-237-3333 | fax: 218-237-3377

Affinity
REAL ESTATE INC

\$354,045
MLS 6657572 Residential
TBD Red Willow Drive
Frazee MN 56544



website: www.AffinityRealEstate.com | email: info@affinityrealestate.com | office: 218-237-3333 | fax: 218-237-3377



\$354,045
 MLS 6657572 Residential
 TBD Red Willow Drive
 Frazee MN 56544



website: www.AffinityRealEstate.com | email: info@affinityrealestate.com | office: 218-237-3333 | fax: 218-237-3377



\$354,045
 MLS 6657572 Residential
 TBD Red Willow Drive
 Frazee MN 56544



website: www.AffinityRealEstate.com | email: info@affinityrealestate.com | office: 218-237-3333 | fax: 218-237-3377

Affinity
REAL ESTATE INC

\$354,045

MLS 6657572 Residential
TBD Red Willow Drive
Frazee MN 56544



website: www.AffinityRealEstate.com | email: info@affinityrealestate.com | office: 218-237-3333 | fax:218-237-3377



\$354,045
MLS 6657572 Residential
TBD Red Willow Drive
Frazee MN 56544