



MLS 6657600 Residential

\$281,999

1,176 sq ft
2 bedrooms
1 baths

6533 Ponderosa Drive
Walker MN 56484

Status: Active

Description:

Situated just off the shores of beautiful Leech Lake, this charming 2-bedroom, 1-bathroom home offers the perfect blend of comfort and outdoor adventure, all set on 2.25 acres of private, wooded land. Whether you're looking for a serene getaway or a year-round residence, this property has something for everyone. The home features 2 spacious bedrooms, perfect for family or guests, and 1 full bathroom with updated fixtures. The detached 2-stall garage provides ample space for storage, a workshop, or parking, while the expansive lot offers plenty of room for outdoor activities, gardening, or future expansion.

For outdoor enthusiasts, this property is a dream come true. Leech Lake, known for world-class fishing and boating, is just a stone's throw away, offering opportunities to catch walleye, musky, bass, and panfish. The surrounding area is also a prime location for hunting, with nearby forests and fields home to abundant wildlife, including deer and waterfowl. During the winter months, you can enjoy easy access to snowmobiling and ATV trails, making this a year-round destination for outdoor adventure.

In addition to the natural beauty surrounding the property, you'll find plenty of amenities just a short drive away. The nearby town of Walker, MN, offers a variety of shops, markets, and services, from unique boutiques to larger grocery stores and home improvement retailers. Dining options are abundant, with lakeside eateries and locally-owned restaurants serving up fresh, regional fare. The property is also located in the heart of Cass County, which is known for its public parks, hiking trails, and scenic views, providing endless opportunities for exploration.

This home is the perfect escape for anyone looking to embrace the beauty of nature while being just minutes away from all the amenities and recreation you could ask for. Whether it's fishing, hunting, or simply relaxing in your private sanctuary, this property offers it all. Don't miss the chance to make this delightful property your own. Schedule a showing today and see firsthand all that this special home has to offer.

For more information or to schedule a tour, contact us now!

Additional Details:

Year Built 1970
Lot Acres 2.25
Lot Dimensions 249 x 189 x 138 x 399 x 283
Garage Stalls 2

School District 113
Listed By: Coldwell Banker Realty

Taxes with Assessments \$842
Affinity Real Estate Inc. participates in the Regional Multiple Listing Service of Minnesota, Inc Broker Reciprocity (sm) program, allowing us to display other broker's listings on our website. All properties are subject to change or withdrawal.

Basement: None **Fuel:** Propane **Garage:** 2 **Heat:** Radiant Floor **Sewer:** Septic System Compliant - Yes, Tank with Drainage Field **Water:** Drilled

Air Conditioning: Window Unit(s)

Driving Directions:

From Walker, MN 56484, head north on Highway 133 to Leech Lake. Turn right on Leech Lake Road. Turn left on Ponderosa Drive. The property is on the right side of the road.



Call Affinity Real Estate

218-237-3333

info@affinityrealestate.com



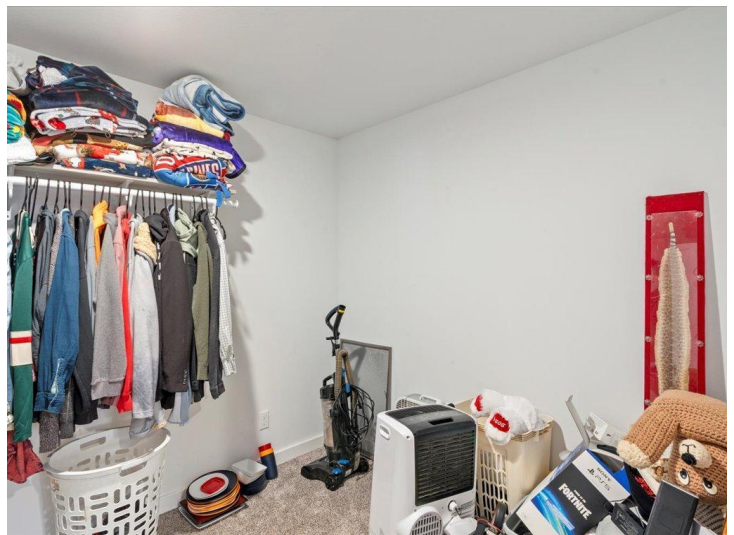
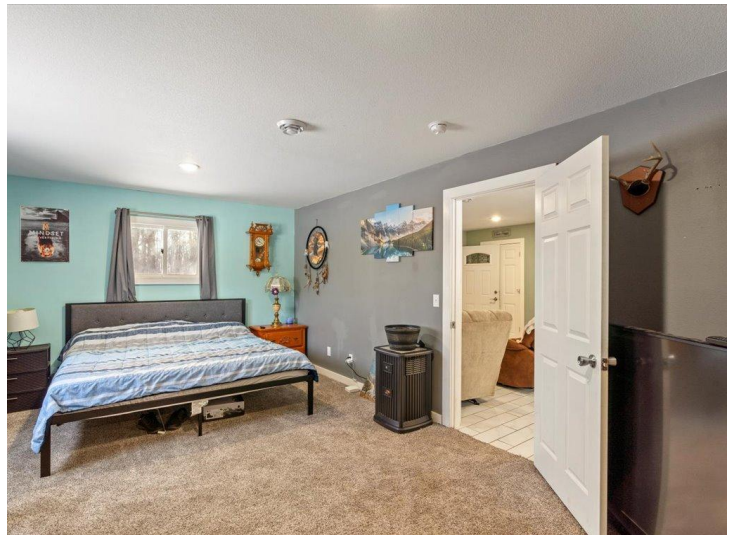
Affinity Real Estate - 600 Park Avenue South - Park Rapids MN 56470
Septic System Compliant - Yes, Tank with Drainage Field Water: Drilled



website: www.AffinityRealEstate.com | email: info@affinityrealestate.com | office: 218-237-3333 | fax: 218-237-3377

Affinity
REAL ESTATE INC

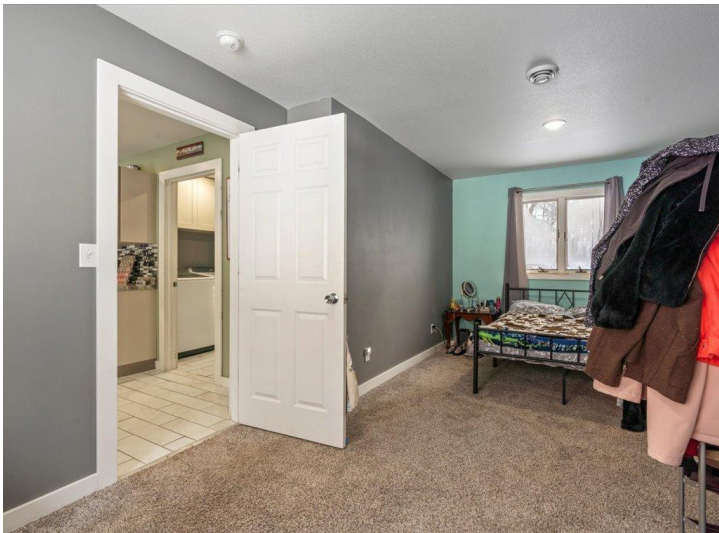
\$281,999
MLS 6657600 Residential
6533 Ponderosa Drive
Walker MN 56484



website: www.AffinityRealEstate.com | email: info@affinityrealestate.com | office: 218-237-3333 | fax:218-237-3377

Affinity
REAL ESTATE INC

\$281,999
MLS 6657600 Residential
6533 Ponderosa Drive
Walker MN 56484



website: www.AffinityRealEstate.com | email: info@affinityrealestate.com | office: 218-237-3333 | fax:218-237-3377

Affinity
REAL ESTATE INC

\$281,999
MLS 6657600 Residential
6533 Ponderosa Drive
Walker MN 56484



website: www.AffinityRealEstate.com | email: info@affinityrealestate.com | office: 218-237-3333 | fax:218-237-3377

Affinity
REAL ESTATE INC

\$281,999
MLS 6657600 Residential
6533 Ponderosa Drive
Walker MN 56484



website: www.AffinityRealEstate.com | email: info@affinityrealestate.com | office: 218-237-3333 | fax: 218-237-3377

Affinity
REAL ESTATE INC

\$281,999
MLS 6657600 Residential
6533 Ponderosa Drive
Walker MN 56484



website: www.AffinityRealEstate.com | email: info@affinityrealestate.com | office: 218-237-3333 | fax:218-237-3377



\$281,999
MLS 6657600 Residential
6533 Ponderosa Drive
Walker MN 56484