



MLS 6658331 Lake Home

\$3,300,000

4,872 sq ft
4 bedrooms
5 baths

23078 Gosslee Lane
Detroit Lakes MN 56501

Waterfront: Pelican

Status: Active

Description:

A private waterfront paradise! Discover this luxury lakeshore retreat that blends rustic elegance and serene lakefront living. This one-of-a-kind log estate built by Voyager Log Homes is set on sprawling manicured acreage on highly sought-after Pelican Lake. Offering privacy and an expansive detached mother-in-law suite, the home is crafted with stunning Maple and Hickory wood with stone finishes. It welcomes you with soaring vaulted ceilings, exposed log beams and breathtaking lake views from nearly every room. The primary suite offers a private sanctuary complete with a fireplace, walk-in closet with laundry, luxurious private bath and a loft perfect for an office or a quiet retreat. The lower level is perfect for entertaining with a full bar, family room and a guest suite. Outside of the main house, the grounds are equally impressive. Over seven acres of land, a massive backyard overlooking 200 feet of lakeshore and an oversized outbuilding. Relax by the water, host gatherings around the firepit or spend afternoons exploring your private estate. This property offers the perfect balance of luxury, nature and lifestyle. This lakeshore log masterpiece delivers an experience like no other.

Additional Details:

Year Built	1995
Lot Acres	7.83
Lot Dimensions	Irregular
Garage Stalls	3
School District	548
Taxes	\$10,832
Taxes with Assessments	\$10,832
Tax Year	2025

Additional Features:

Basement: Daylight/Lookout Windows, Egress Window(s), Finished, Full **Fuel:** Electric, Propane, Wood **Garage:** 3 **Heat:** Dual **Sewer:** Private Sewer, Septic System Compliant - Yes **Water:** Submersible - 4 Inch **Air Conditioning:** Central Air

Driving Directions:

Take Co Hwy 20 to US-59 N; Follow US-59 N to Washington Ave in Detroit Lakes; Turn right onto Washington Ave



Listed By:
Lakes Sotheby's International

Affinity Real Estate Inc. participates in the Regional Multiple Listing Service of Minnesota, Inc Broker Reciprocity (sm) program, allowing us to display other broker's listings on our website. All properties are subject to prior sale, change or withdrawal.



Call Affinity Real Estate

218-237-3333

info@affinityrealestate.com



Affinity Real Estate - 600 Park Avenue South - Park Rapids MN 56470



website: www.AffinityRealEstate.com | email: info@affinityrealestate.com | office: 218-237-3333 | fax: 218-237-3377

Affinity
REAL ESTATE INC

\$3,300,000

MLS 6658331 Lake Home
23078 Gosslee Lane
Detroit Lakes MN 56501

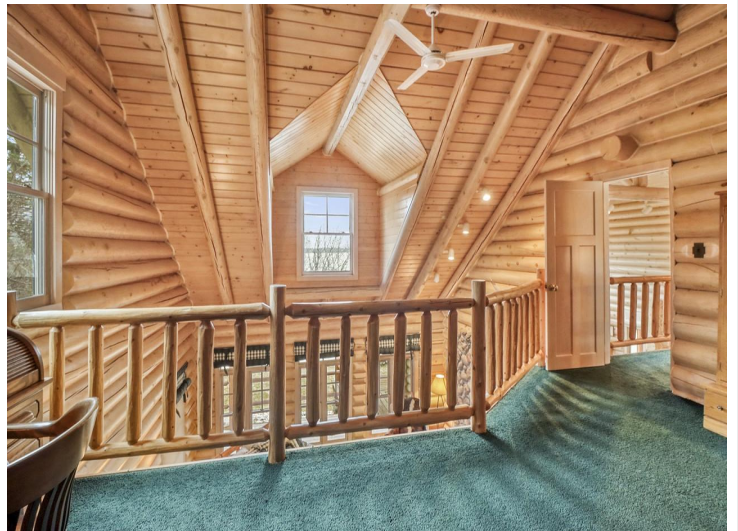


website: www.AffinityRealEstate.com | email: info@affinityrealestate.com | office: 218-237-3333 | fax: 218-237-3377

Affinity
REAL ESTATE INC

\$3,300,000

MLS 6658331 Lake Home
23078 Gosslee Lane
Detroit Lakes MN 56501



website: www.AffinityRealEstate.com | email: info@affinityrealestate.com | office: 218-237-3333 | fax: 218-237-3377

Affinity
REAL ESTATE INC

\$3,300,000
MLS 6658331 Lake Home
23078 Gosslee Lane
Detroit Lakes MN 56501

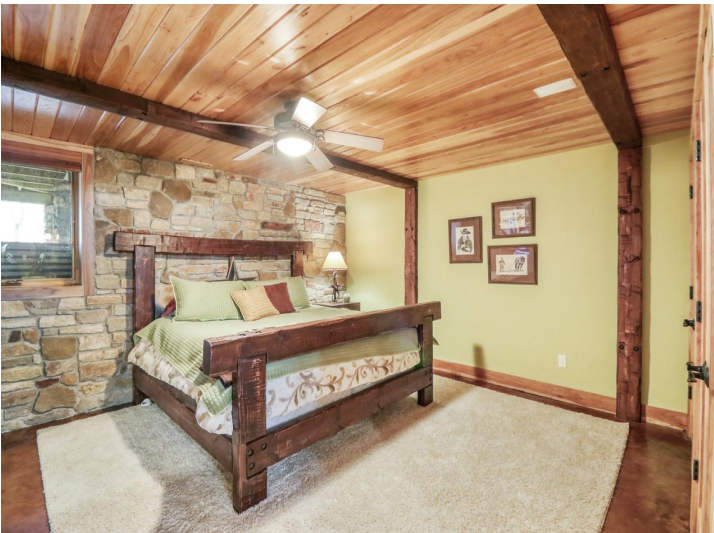


website: www.AffinityRealEstate.com | email: info@affinityrealestate.com | office: 218-237-3333 | fax: 218-237-3377

Affinity
REAL ESTATE INC

\$3,300,000

MLS 6658331 Lake Home
23078 Gosslee Lane
Detroit Lakes MN 56501



website: www.AffinityRealEstate.com | email: info@affinityrealestate.com | office: 218-237-3333 | fax: 218-237-3377

Affinity
REAL ESTATE INC

\$3,300,000
MLS 6658331 Lake Home
23078 Gosslee Lane
Detroit Lakes MN 56501



website: www.AffinityRealEstate.com | email: info@affinityrealestate.com | office: 218-237-3333 | fax: 218-237-3377

Affinity
REAL ESTATE INC

\$3,300,000

MLS 6658331 Lake Home
23078 Gosslee Lane
Detroit Lakes MN 56501



website: www.AffinityRealEstate.com | email: info@affinityrealestate.com | office: 218-237-3333 | fax: 218-237-3377



\$3,300,000

MLS 6658331 Lake Home
23078 Gosslee Lane
Detroit Lakes MN 56501



website: www.AffinityRealEstate.com | email: info@affinityrealestate.com | office: 218-237-3333 | fax: 218-237-3377

Affinity
REAL ESTATE INC

\$3,300,000

MLS 6658331 Lake Home
23078 Gosslee Lane
Detroit Lakes MN 56501

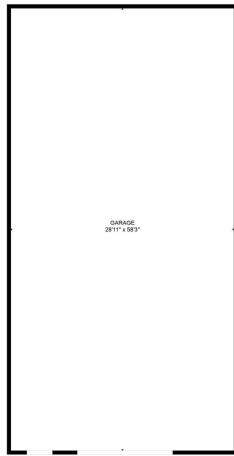


website: www.AffinityRealEstate.com | email: info@affinityrealestate.com | office: 218-237-3333 | fax: 218-237-3377

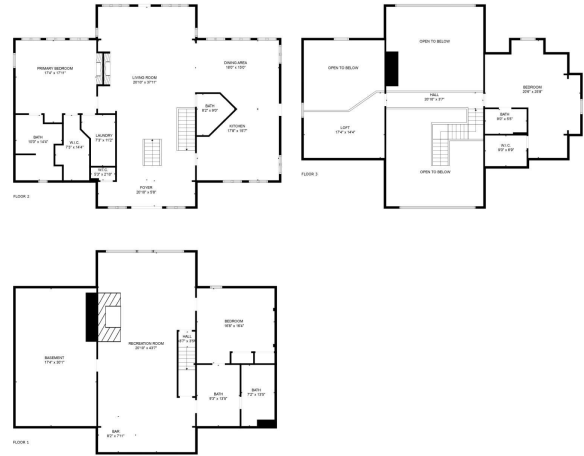


\$3,300,000

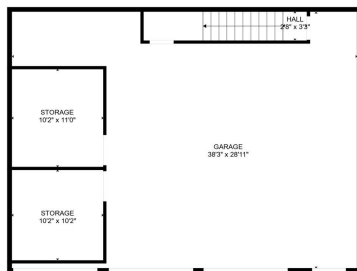
MLS 6658331 Lake Home
23078 Gosslee Lane
Detroit Lakes MN 56501



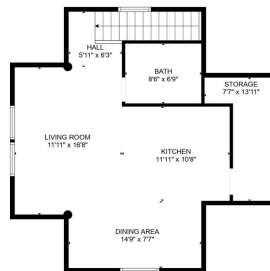
FLOOR PLAN CREATED BY CUBICASA APP. MEASUREMENTS DEEMED HIGHLY RELIABLE BUT NOT GUARANTEED.



FLOOR PLAN CREATED BY CUBICASA APP. MEASUREMENTS DEEMED HIGHLY RELIABLE BUT NOT GUARANTEED.



FLOOR 1



FLOOR 2

FLOOR PLAN CREATED BY CUBICASA APP. MEASUREMENTS DEEMED HIGHLY RELIABLE BUT NOT GUARANTEED.

website: www.AffinityRealEstate.com | email: info@affinityrealestate.com | office: 218-237-3333 | fax: 218-237-3377

Affinity
REAL ESTATE INC

\$3,300,000

MLS 6658331 Lake Home
23078 Gosslee Lane
Detroit Lakes MN 56501