



MLS 6658341 Lake Home

\$329,900

1,472 sq ft
2 bedrooms
1 baths

2170 County 5
Hackensack MN 56452

Waterfront: Lost Lake (Woodrow
Twp.)

Status: Active

Description:

Lose yourself in the beauty of Lost Lake with 700' of lakeshore and 10+ acres of land. Thoughtfully decorated with reclaimed materials, this unique home exudes warmth and character. The main level features a cozy living room with a fieldstone, wood-burning fireplace, a bright kitchen with a dining area, and a versatile attached space, perfect for a home office or reading nook. A bedroom, full bathroom, and convenient laundry room complete the main floor. Upstairs, a private bedroom with a sitting area offers a peaceful retreat. A large bonus space is ideal for a walk-in closet, nursery, or craft room. Outside, a sprawling deck overlooks the water, creating the perfect spot for relaxing or entertaining. A detached two-car garage and multiple sheds provide ample storage, while the expansive acreage offers endless possibilities for outdoor enjoyment. Lost Lake blends into Kid Lake, making this an excellent property for year-round fun!

Additional Details:

Year Built	1957
Lot Acres	10.42
Lot Dimensions	1044x250x250x405x811x252x250
Garage Stalls	2
School District	113
Taxes	\$770
Taxes with Assessments	\$836
Tax Year	2025

Additional Features:

Basement: Other **Fuel:** Propane, Wood **Garage:** 2 **Heat:** Forced Air, Fireplace(s) **Sewer:** Tank with Drainage Field **Water:** Sand Point **Air Conditioning:** None

Driving Directions:

From Longville - Head West on Co Rd 5 NW for 12 miles. Turn right onto subject property.



Listed By:
Heartland Real Estate

Affinity Real Estate Inc. participates in the Regional Multiple Listing Service of Minnesota, Inc Broker Reciprocity (sm) program, allowing us to display other broker's listings on our website. All properties are subject to prior sale, change or withdrawal.



Call Affinity Real Estate

218-237-3333

info@affinityrealestate.com



Affinity Real Estate - 600 Park Avenue South - Park Rapids MN 56470



website: www.AffinityRealEstate.com | email: info@affinityrealestate.com | office: 218-237-3333 | fax: 218-237-3377

Affinity
REAL ESTATE INC

\$329,900
MLS 6658341 Lake Home
2170 County 5
Hackensack MN 56452



website: www.AffinityRealEstate.com | email: info@affinityrealestate.com | office: 218-237-3333 | fax: 218-237-3377

Affinity
REAL ESTATE INC

\$329,900
MLS 6658341 Lake Home
2170 County 5
Hackensack MN 56452



website: www.AffinityRealEstate.com | email: info@affinityrealestate.com | office: 218-237-3333 | fax: 218-237-3377

Affinity
REAL ESTATE INC

\$329,900
MLS 6658341 Lake Home
2170 County 5
Hackensack MN 56452



website: www.AffinityRealEstate.com | email: info@affinityrealestate.com | office: 218-237-3333 | fax: 218-237-3377

Affinity
REAL ESTATE INC

\$329,900
MLS 6658341 Lake Home
2170 County 5
Hackensack MN 56452



website: www.AffinityRealEstate.com | email: info@affinityrealestate.com | office: 218-237-3333 | fax: 218-237-3377



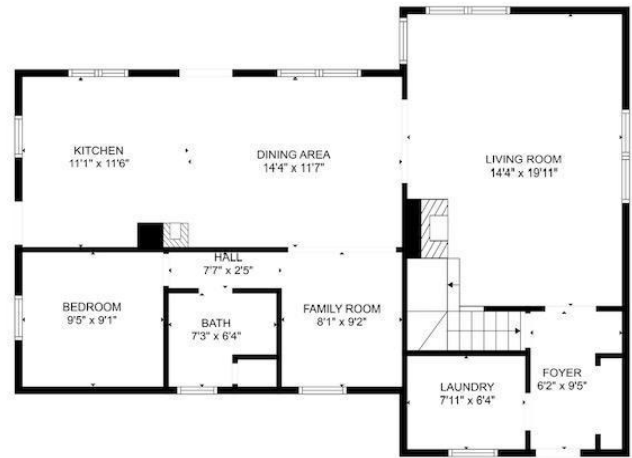
\$329,900
 MLS 6658341 Lake Home
 2170 County 5
 Hackensack MN 56452



website: www.AffinityRealEstate.com | email: info@affinityrealestate.com | office: 218-237-3333 | fax: 218-237-3377

Affinity
REAL ESTATE INC

\$329,900
MLS 6658341 Lake Home
2170 County 5
Hackensack MN 56452



website: www.AffinityRealEstate.com | email: info@affinityrealestate.com | office: 218-237-3333 | fax: 218-237-3377



\$329,900

MLS 6658341 Lake Home
2170 County 5
Hackensack MN 56452

website: www.AffinityRealEstate.com | email: info@affinityrealestate.com | office: 218-237-3333 | fax:218-237-3377



\$329,900

MLS 6658341 Lake Home
2170 County 5
Hackensack MN 56452