



MLS 6658358 Lake Home

**\$1,385,000**

5,334 sq ft  
5 bedrooms  
4 baths

16231 Eagle Lake Road  
Fifty Lakes MN 56448

Waterfront: Eagle Lake (18029600)

Status: Active

#### Description:

Impressive one-of-a-kind luxury lake home featuring intricate post and beam construction throughout, Custom designed and built by Nor-Son Custom Homes, headquartered in Baxter, MN.. This private oasis retreat is situated on a gorgeous 2.6 acre lot offering the 9th fairway of Golden Eagle Golf Course directly out your front door and Eagle Lake just steps out your back door with 178 feet of private sandy lakeshore. Revel in the spectacular natural sunlight filtering in from your 2-story vaulted great room with floor to ceiling windows and panoramic views. The dramatic stone fireplace is a true showstopper. This home is made for entertaining both family and friends with indoor and outdoor spaces seamlessly flowing together. The spacious kitchen features an enormous center island, stainless appliances, separate eating area and huge walk-in pantry. The primary suite is a true vacation retreat with a large step-in shower, dual sinks, spacious walk-in closet and gas fireplace. The thoughtfully designed floor plan makes it easy for everyone to have their own private spaces. With a 3-season porch, bunk room, multiple decks, patio and views for days, this home is truly something very special and a wonderful place to call home.

#### Additional Details:

Year Built	2001
Lot Acres	2.66
Lot Dimensions	502x476.9x178.3x316.9
Garage Stalls	3
School District	2174
Taxes	\$7,240
Taxes with Assessments	\$7,240
Tax Year	2024

#### Additional Features:

**Fuel:** Natural Gas **Heat:** Forced Air

#### Driving Directions:

From Crosslake: North on Cty Rd 3, left on Cty Rd 1, Right on Kego Rd, Right to W Eagle Lake Rd, will say Private Road - follow and home will be on the right side across from the Golden Eagle Club House.



Listed By:  
Edina Realty, Inc.

Affinity Real Estate Inc. participates in the Regional Multiple Listing Service of Minnesota, Inc Broker Reciprocity (sm) program, allowing us to display other broker's listings on our website. All properties are subject to prior sale, change or withdrawal.



**Call Affinity Real Estate**

**218-237-3333**

**info@affinityrealestate.com**



**Affinity Real Estate - 600 Park Avenue South - Park Rapids MN 56470**





website: [www.AffinityRealEstate.com](http://www.AffinityRealEstate.com) | email: [info@affinityrealestate.com](mailto:info@affinityrealestate.com) | office: 218-237-3333 | fax: 218-237-3377



**\$1,385,000**

MLS 6658358 Lake Home  
16231 Eagle Lake Road  
Fifty Lakes MN 56448





website: [www.AffinityRealEstate.com](http://www.AffinityRealEstate.com) | email: [info@affinityrealestate.com](mailto:info@affinityrealestate.com) | office: 218-237-3333 | fax: 218-237-3377

**Affinity**  
REAL ESTATE INC

**\$1,385,000**

MLS 6658358 Lake Home  
16231 Eagle Lake Road  
Fifty Lakes MN 56448





website: [www.AffinityRealEstate.com](http://www.AffinityRealEstate.com) | email: [info@affinityrealestate.com](mailto:info@affinityrealestate.com) | office: 218-237-3333 | fax: 218-237-3377



**\$1,385,000**

MLS 6658358 Lake Home  
16231 Eagle Lake Road  
Fifty Lakes MN 56448





website: [www.AffinityRealEstate.com](http://www.AffinityRealEstate.com) | email: [info@affinityrealestate.com](mailto:info@affinityrealestate.com) | office: 218-237-3333 | fax: 218-237-3377



**\$1,385,000**  
 MLS 6658358 Lake Home  
 16231 Eagle Lake Road  
 Fifty Lakes MN 56448





website: [www.AffinityRealEstate.com](http://www.AffinityRealEstate.com) | email: [info@affinityrealestate.com](mailto:info@affinityrealestate.com) | office: 218-237-3333 | fax: 218-237-3377

**Affinity**  
REAL ESTATE INC

**\$1,385,000**

MLS 6658358 Lake Home  
16231 Eagle Lake Road  
Fifty Lakes MN 56448





website: [www.AffinityRealEstate.com](http://www.AffinityRealEstate.com) | email: [info@affinityrealestate.com](mailto:info@affinityrealestate.com) | office: 218-237-3333 | fax: 218-237-3377

**Affinity**  
REAL ESTATE INC

**\$1,385,000**

MLS 6658358 Lake Home  
16231 Eagle Lake Road  
Fifty Lakes MN 56448





website: [www.AffinityRealEstate.com](http://www.AffinityRealEstate.com) | email: [info@affinityrealestate.com](mailto:info@affinityrealestate.com) | office: 218-237-3333 | fax: 218-237-3377

**Affinity**  
REAL ESTATE INC

**\$1,385,000**  
MLS 6658358 Lake Home  
16231 Eagle Lake Road  
Fifty Lakes MN 56448





website: [www.AffinityRealEstate.com](http://www.AffinityRealEstate.com) | email: [info@affinityrealestate.com](mailto:info@affinityrealestate.com) | office: 218-237-3333 | fax: 218-237-3377

**Affinity**  
REAL ESTATE INC

**\$1,385,000**

MLS 6658358 Lake Home  
16231 Eagle Lake Road  
Fifty Lakes MN 56448





website: [www.AffinityRealEstate.com](http://www.AffinityRealEstate.com) | email: [info@affinityrealestate.com](mailto:info@affinityrealestate.com) | office: 218-237-3333 | fax: 218-237-3377

**Affinity**  
REAL ESTATE INC

**\$1,385,000**

MLS 6658358 Lake Home  
16231 Eagle Lake Road  
Fifty Lakes MN 56448





website: [www.AffinityRealEstate.com](http://www.AffinityRealEstate.com) | email: [info@affinityrealestate.com](mailto:info@affinityrealestate.com) | office: 218-237-3333 | fax: 218-237-3377

**Affinity**  
REAL ESTATE INC

**\$1,385,000**

MLS 6658358 Lake Home  
16231 Eagle Lake Road  
Fifty Lakes MN 56448





website: [www.AffinityRealEstate.com](http://www.AffinityRealEstate.com) | email: [info@affinityrealestate.com](mailto:info@affinityrealestate.com) | office: 218-237-3333 | fax: 218-237-3377

**Affinity**  
REAL ESTATE INC

**\$1,385,000**

MLS 6658358 Lake Home  
16231 Eagle Lake Road  
Fifty Lakes MN 56448





website: [www.AffinityRealEstate.com](http://www.AffinityRealEstate.com) | email: [info@affinityrealestate.com](mailto:info@affinityrealestate.com) | office: 218-237-3333 | fax: 218-237-3377

**Affinity**  
REAL ESTATE INC

**\$1,385,000**

MLS 6658358 Lake Home  
16231 Eagle Lake Road  
Fifty Lakes MN 56448





website: [www.AffinityRealEstate.com](http://www.AffinityRealEstate.com) | email: [info@affinityrealestate.com](mailto:info@affinityrealestate.com) | office: 218-237-3333 | fax: 218-237-3377

**Affinity**  
REAL ESTATE INC

**\$1,385,000**  
MLS 6658358 Lake Home  
16231 Eagle Lake Road  
Fifty Lakes MN 56448





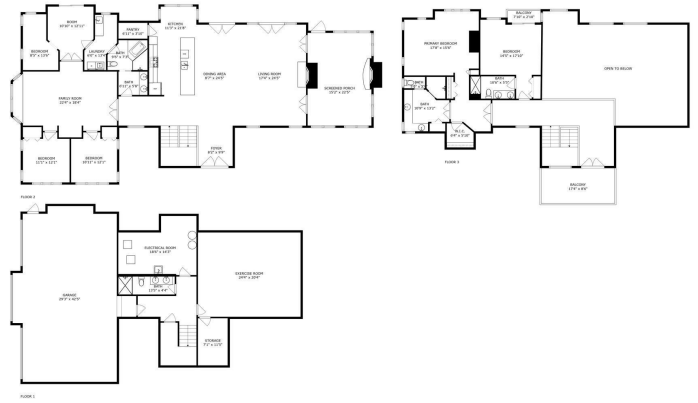
website: [www.AffinityRealEstate.com](http://www.AffinityRealEstate.com) | email: [info@affinityrealestate.com](mailto:info@affinityrealestate.com) | office: 218-237-3333 | fax: 218-237-3377



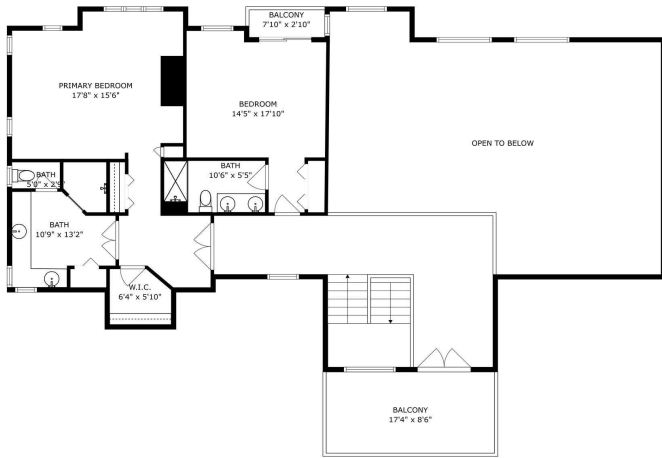
**\$1,385,000**

MLS 6658358 Lake Home  
16231 Eagle Lake Road  
Fifty Lakes MN 56448

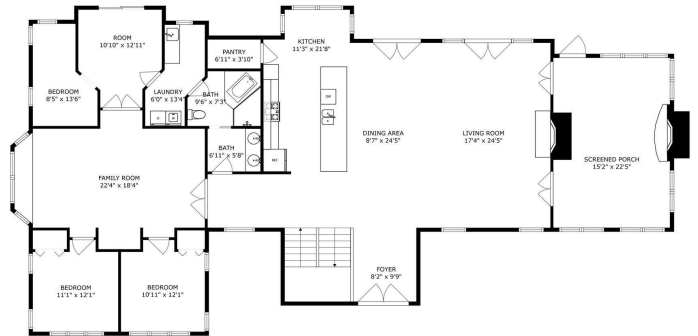




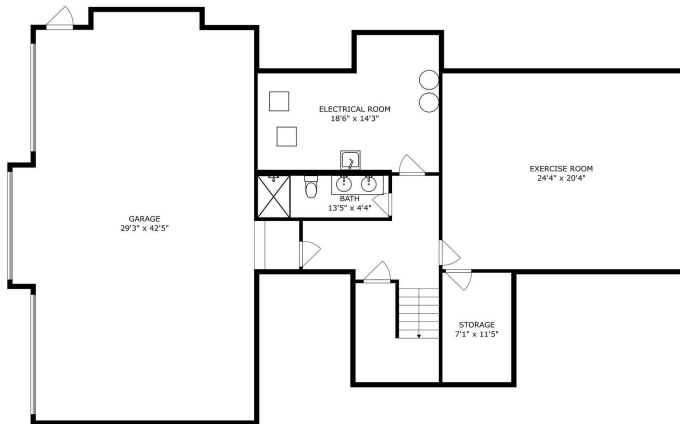
SIZES AND DIMENSIONS ARE APPROXIMATE, ACTUAL MAY VARY.



SIZES AND DIMENSIONS ARE APPROXIMATE, ACTUAL MAY VARY.



SIZES AND DIMENSIONS ARE APPROXIMATE, ACTUAL MAY VARY.



SIZES AND DIMENSIONS ARE APPROXIMATE, ACTUAL MAY VARY.

website: [www.AffinityRealEstate.com](http://www.AffinityRealEstate.com) | email: [info@affinityrealestate.com](mailto:info@affinityrealestate.com) | office: 218-237-3333 | fax: 218-237-3377

**Affinity**  
REAL ESTATE INC

**\$1,385,000**

MLS 6658358 Lake Home  
16231 Eagle Lake Road  
Fifty Lakes MN 56448