



MLS 6658995 Residential

**\$109,900**

1,368 sq ft  
3 bedrooms  
1 baths

160 Garden Way  
Longville MN 56655

Status: Pending

**Description:**

Get ready for this oversized three bedroom, one bath home located right in Longville. This property is close to amenities right in town, abundant lakes, and other recreational activities in walking distance! The home features an updated kitchen, dining room, and many rooms to make your own. You will also enjoy the yard space and detached one car garage for storage. Don't miss this great opportunity! Schedule your showing today!

**Additional Details:**

Year Built	1949
Lot Acres	0.46
Lot Dimensions	145x146
Garage Stalls	1
School District	118
Taxes	\$538
Taxes with Assessments	\$604
Tax Year	2024

**Additional Features:**

**Fuel:** Propane **Heat:** Forced Air

**Driving Directions:**

Take MN-371 N to 16th Ave SW. Turn right onto 16th Ave SW. At the traffic circle, take the 2nd exit and stay on 16th Ave SW. Continue onto MN-84 N. Turn right to stay on MN-84 N. Turn right onto Garden Way. Home will be on the left.



Listed By:  
eXp Realty

Affinity Real Estate Inc. participates in the Regional Multiple Listing Service of Minnesota, Inc Broker Reciprocity (sm) program, allowing us to display other broker's listings on our website. All properties are subject to prior sale, change or withdrawal.



**Call Affinity Real Estate**

**218-237-3333**

**info@affinityrealestate.com**



**Affinity Real Estate - 600 Park Avenue South - Park Rapids MN 56470**





website: [www.AffinityRealEstate.com](http://www.AffinityRealEstate.com) | email: [info@affinityrealestate.com](mailto:info@affinityrealestate.com) | office: 218-237-3333 | fax: 218-237-3377

**Affinity**  
REAL ESTATE INC

**\$109,900**  
MLS 6658995 Residential  
160 Garden Way  
Longville MN 56655





website: [www.AffinityRealEstate.com](http://www.AffinityRealEstate.com) | email: [info@affinityrealestate.com](mailto:info@affinityrealestate.com) | office: 218-237-3333 | fax: 218-237-3377

**Affinity**  
REAL ESTATE INC

**\$109,900**  
MLS 6658995 Residential  
160 Garden Way  
Longville MN 56655



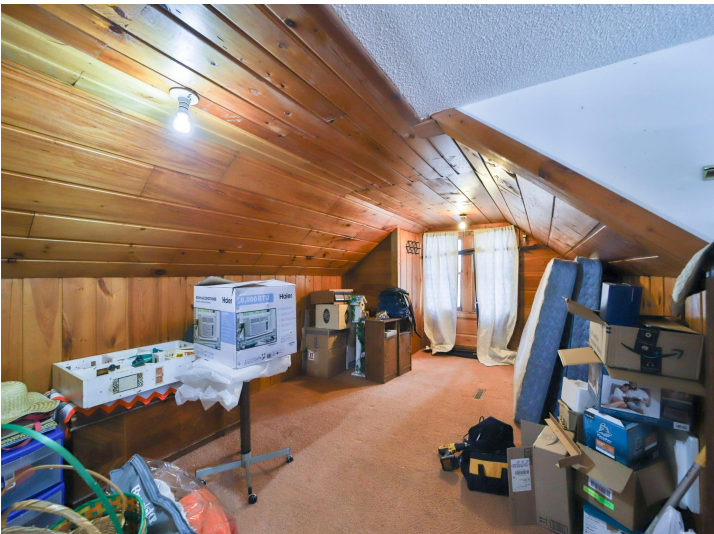


website: [www.AffinityRealEstate.com](http://www.AffinityRealEstate.com) | email: [info@affinityrealestate.com](mailto:info@affinityrealestate.com) | office: 218-237-3333 | fax: 218-237-3377

**Affinity**  
REAL ESTATE INC

**\$109,900**  
MLS 6658995 Residential  
160 Garden Way  
Longville MN 56655





website: [www.AffinityRealEstate.com](http://www.AffinityRealEstate.com) | email: [info@affinityrealestate.com](mailto:info@affinityrealestate.com) | office: 218-237-3333 | fax: 218-237-3377

**Affinity**  
REAL ESTATE INC

**\$109,900**  
MLS 6658995 Residential  
160 Garden Way  
Longville MN 56655





website: [www.AffinityRealEstate.com](http://www.AffinityRealEstate.com) | email: [info@affinityrealestate.com](mailto:info@affinityrealestate.com) | office: 218-237-3333 | fax: 218-237-3377



**\$109,900**  
MLS 6658995 Residential  
160 Garden Way  
Longville MN 56655