



MLS 6659118 Land

\$74,250

5.23 Acres
Subdivided

TBD Mallard Street
Detroit Lakes MN 56501

Status: Active



Description:

Calling all Contractors, Manufactures, Processing plants, or any other business looking to expand or grow in a industrial setting. Affordable City of Detroit Lakes Industrial lots available in the N Tower Road Industrial Park and the North Industrial Park. Lot sizes range from 2-5 acres. Tax Increment financing may be available. Call today with questions or for more information!

Additional Details:

Lot Acres	5.23
Lot Dimensions	250x910
School District	22
Taxes	(unreported)
Taxes with Assessments	(unreported)
Tax Year	2025

Additional Features:

Driving Directions:

From CR21 Drive East on Mallard St to Second Lot on the Left



Listed By:
The Real Estate Company of Detroit Lakes

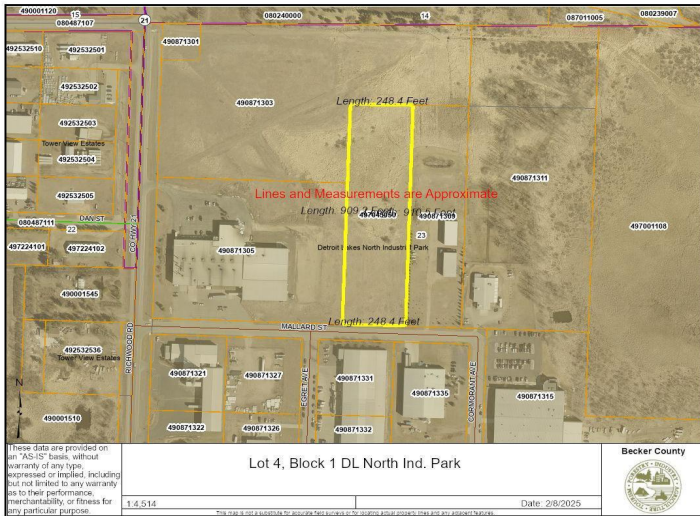
Affinity Real Estate Inc. participates in the Regional Multiple Listing Service of Minnesota, Inc Broker Reciprocity (sm) program, allowing us to display other broker's listings on our website. All properties are subject to prior sale, change or withdrawal.



Call Affinity Real Estate
218-237-3333
info@affinityrealestate.com



Affinity Real Estate - 600 Park Avenue South - Park Rapids MN 56470



website: www.AffinityRealEstate.com | email: info@affinityrealestate.com | office: 218-237-3333 | fax: 218-237-3377



\$74,250
 MLS 6659118 Land
 TBD Mallard Street
 Detroit Lakes MN 56501