



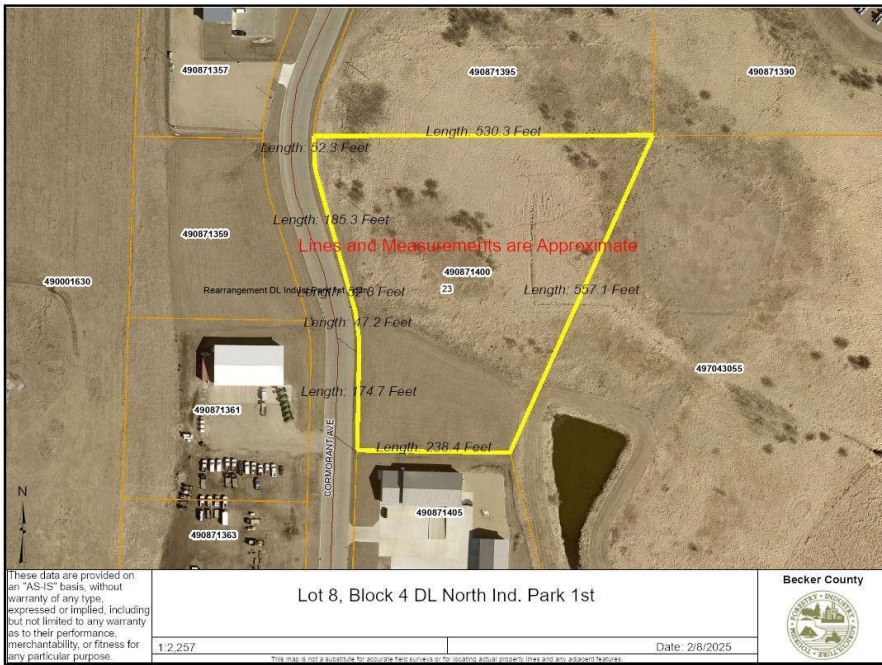
MLS 6659127 Land

**\$62,172**

4.2 Acres  
Subdivided

949 Cormorant Avenue  
Detroit Lakes MN 56501

Status: Active



#### Description:

Calling all Contractors, Manufactures, Processing plants, or any other business looking to expand or grow in a industrial setting. Affordable City of Detroit Lakes Industrial lots available in the N Tower Road Industrial Park and the North Industrial Park. Lot sizes range from 2-5 acres. Tax Increment financing may be available. Call today with questions or for more information!

#### Additional Details:

Lot Acres	4.2
Lot Dimensions	Irregular
School District	22
Taxes	(unreported)
Taxes with Assessments	(unreported)
Tax Year	2025

#### Additional Features:

#### Driving Directions:

From CR21 turn East on Terry St and then Left on Cormorant Ave to 5th lot on the East Side of the road



Listed By:  
The Real Estate Company of Detroit Lakes

Affinity Real Estate Inc. participates in the Regional Multiple Listing Service of Minnesota, Inc Broker Reciprocity (sm) program, allowing us to display other broker's listings on our website. All properties are subject to prior sale, change or withdrawal.



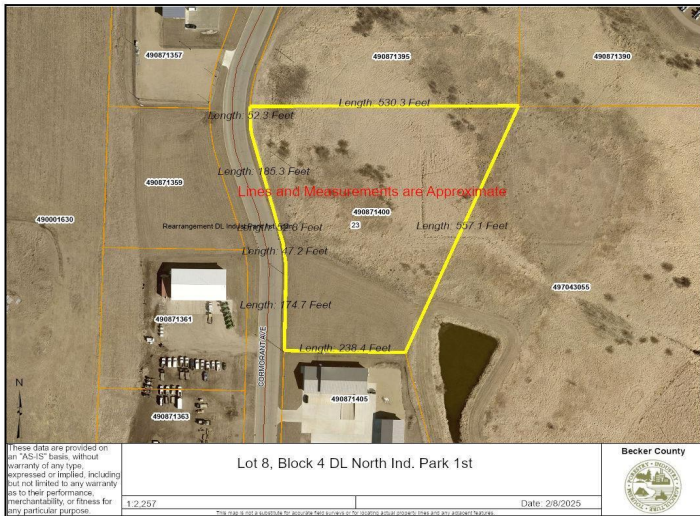
Call Affinity Real Estate

**218-237-3333**

[info@affinityrealestate.com](mailto:info@affinityrealestate.com)



Affinity Real Estate - 600 Park Avenue South - Park Rapids MN 56470



website: [www.AffinityRealEstate.com](http://www.AffinityRealEstate.com) | email: [info@affinityrealestate.com](mailto:info@affinityrealestate.com) | office: 218-237-3333 | fax:218-237-3377



**\$62,172**  
MLS 6659127 Land  
949 Cormorant Avenue  
Detroit Lakes MN 56501